

TOWNSHIP 2 NORTH, RANGE 56 EAST, OF THE MOUNT DIABLO MERIDIAN, NEVADA

OFFICIALLY FILED
NEVADA STATE OFFICE
10:00 A.M., July 10, 1978

A history of surveys is contained in the field notes.

This plat represents a dependent resurvey of a portion of the west boundary of T. 2 N., R. 57 E., and H.E.S. Nos. 117, 118 and 153, designed to restore the corners in their true original locations according to the best available evidence; and the survey of a portion of the north boundary and a portion of the subdivisional lines of T. 2 N., R. 56 E., Mount Diablo Meridian, Nevada.

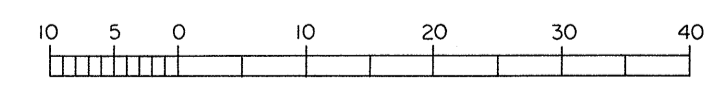
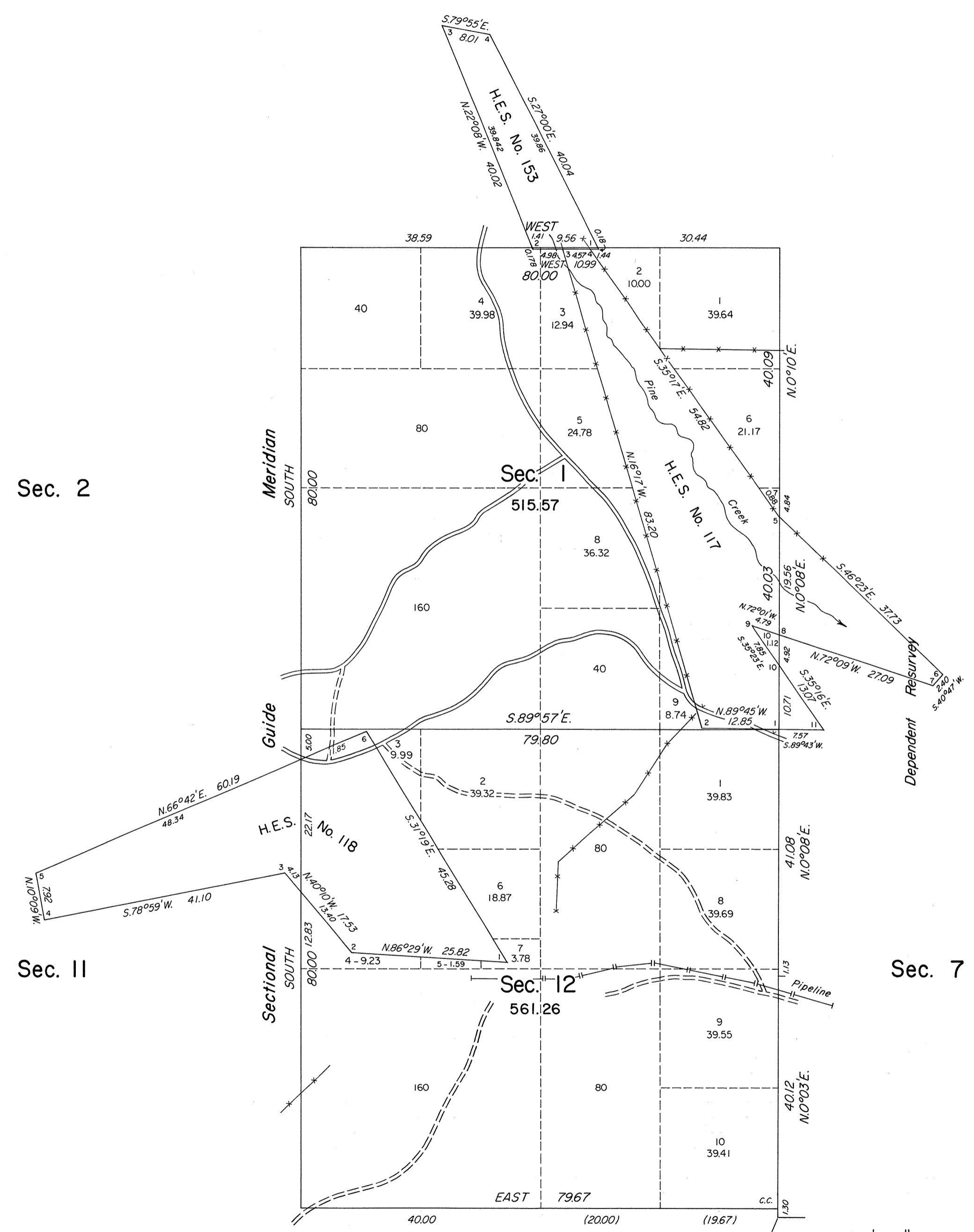
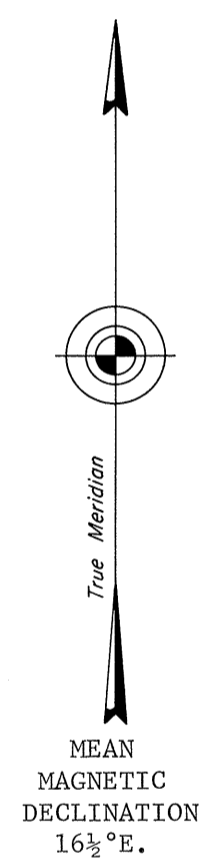
Survey executed by Robert A. Pratt, Cadastral Surveyor, August 15 to August 26, 1977, under Special Instructions dated July 21, 1977, for Group No. 551, Nevada.

UNITED STATES DEPARTMENT OF THE INTERIOR
BUREAU OF LAND MANAGEMENT
Washington, D.C. April 10, 1978

This plat is strictly conformable to the approved field notes, and the survey, having been correctly executed in accordance with the requirements of law and the regulations of this Bureau, is hereby accepted.

For the Director

Bernard W. Foster
Chief, Division of Cadastral Survey



Area Surveyed 1076.83 Acres

Latitude 38°02'34.7"N.
Longitude 115°37'18.6"W.