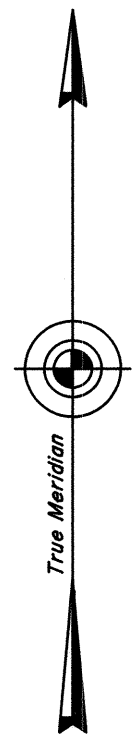
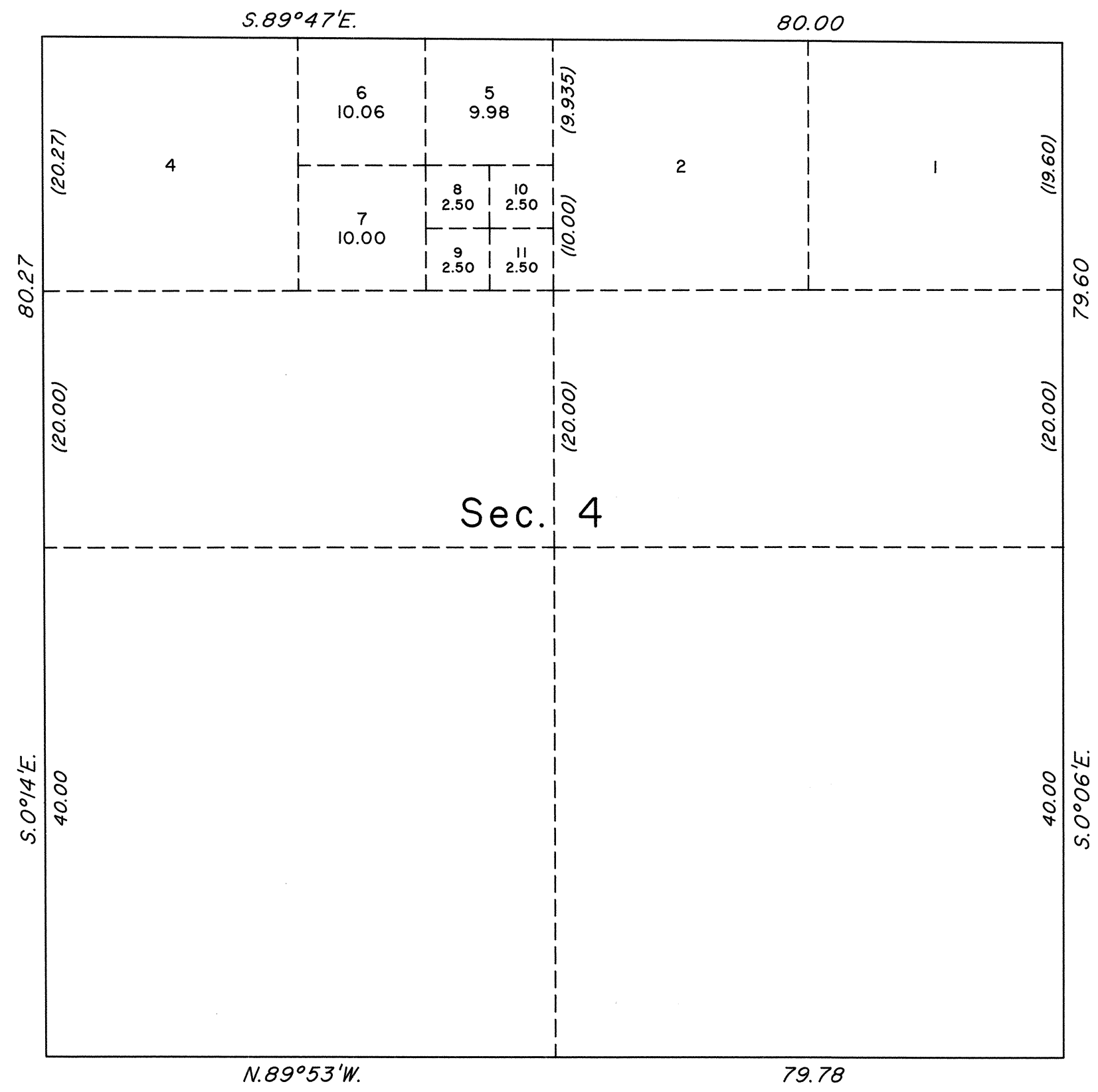


TOWNSHIP 2 NORTH, RANGE 43 EAST, OF THE MOUNT DIABLO MERIDIAN, NEVADA  
SUPPLEMENTAL PLAT OF SECTION 4

OFFICIALLY FILED  
NEVADA STATE OFFICE  
at 10:00 AM on February 3, 1999



This plat, showing a subdivision of original lot 3, sec. 4, T.2N., R.43E., Mount Diablo Meridian, Nevada, is based upon the plat approved September 20, 1881.

UNITED STATES DEPARTMENT OF THE INTERIOR  
BUREAU OF LAND MANAGEMENT

Reno, Nevada February 3, 1999

This plat, showing amended lottings, is based upon the official records, and having been correctly prepared in accordance with the regulations of this Bureau, is hereby accepted.

For the Director

*David J. Clark*

Chief Cadastral Surveyor, Nevada

