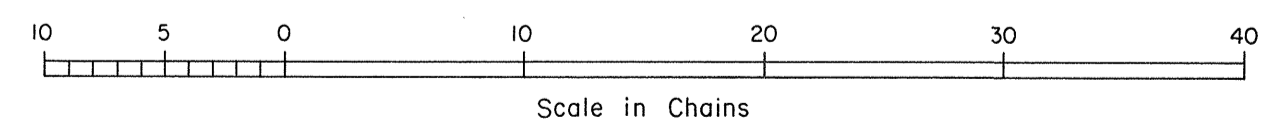
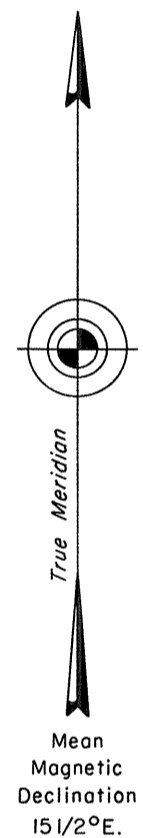
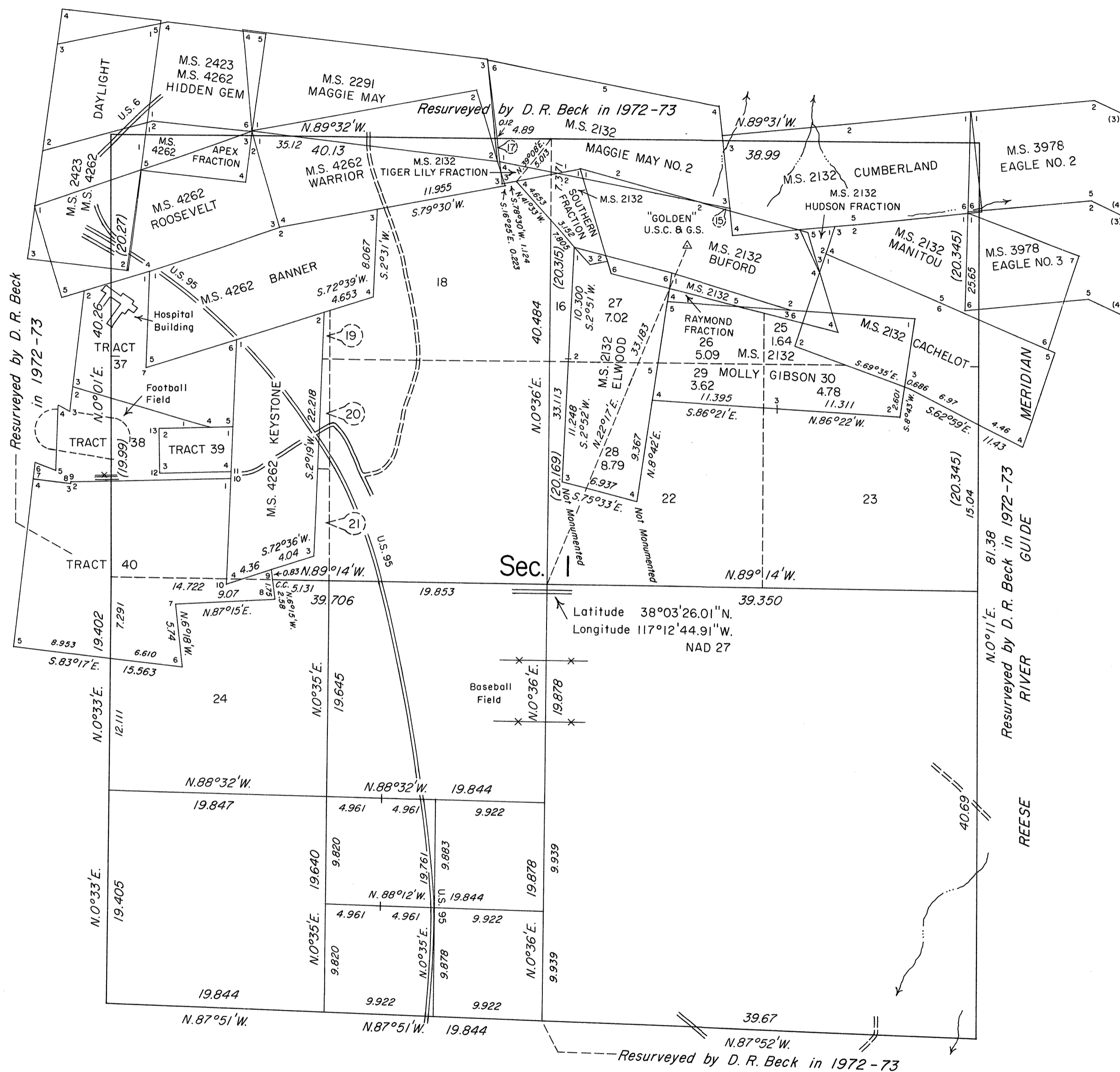


TOWNSHIP 2 NORTH, RANGE 42 EAST, OF THE MOUNT DIABLO MERIDIAN, NEVADA

DEPENDENT RESURVEY AND SUBDIVISION OF SECTION 1



History of the earlier surveys is contained in the field notes.

This plat represents the dependent resurvey of a portion of the subdivisional lines and a portion of Mineral Survey No. 2132, designed to restore the corners in their true original locations according to the best available evidence, and the subdivision of section 1, T. 2 N., R. 42 E., Mount Diablo Meridian, Nevada.

Lottings and areas, except as indicated hereon, are as shown on the plat approved May 31, 1881, the supplemental plat of the NW 1/4 of section 1, accepted September 29, 1958, and the plats accepted January 18, 1974 and August 8, 1979.

Unless otherwise indicated in the field notes, all courses and distances, shown on the plat along the perimeter of the mineral segregation areas, were taken or computed from the appropriate mineral survey record.

Survey executed by Neil R. Forsyth, Cadastral Surveyor, beginning August 1, 1990, and completed August 30, 1990, under Special Instructions dated July 31, 1990 for Group No. 691, Nevada.

UNITED STATES DEPARTMENT OF THE INTERIOR
BUREAU OF LAND MANAGEMENT

Reno, Nevada August 13, 1992

This plat is strictly conformable to the approved field notes, and the survey, having been correctly executed in accordance with the requirements of law and the regulations of this Bureau, is hereby accepted.

For the Director

John J. Parrish
Chief Cadastral Surveyor, Nevada