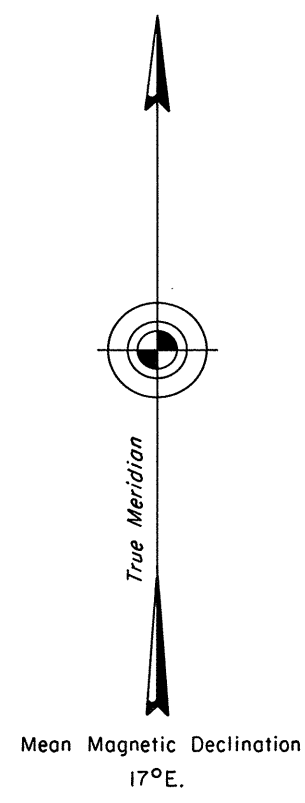
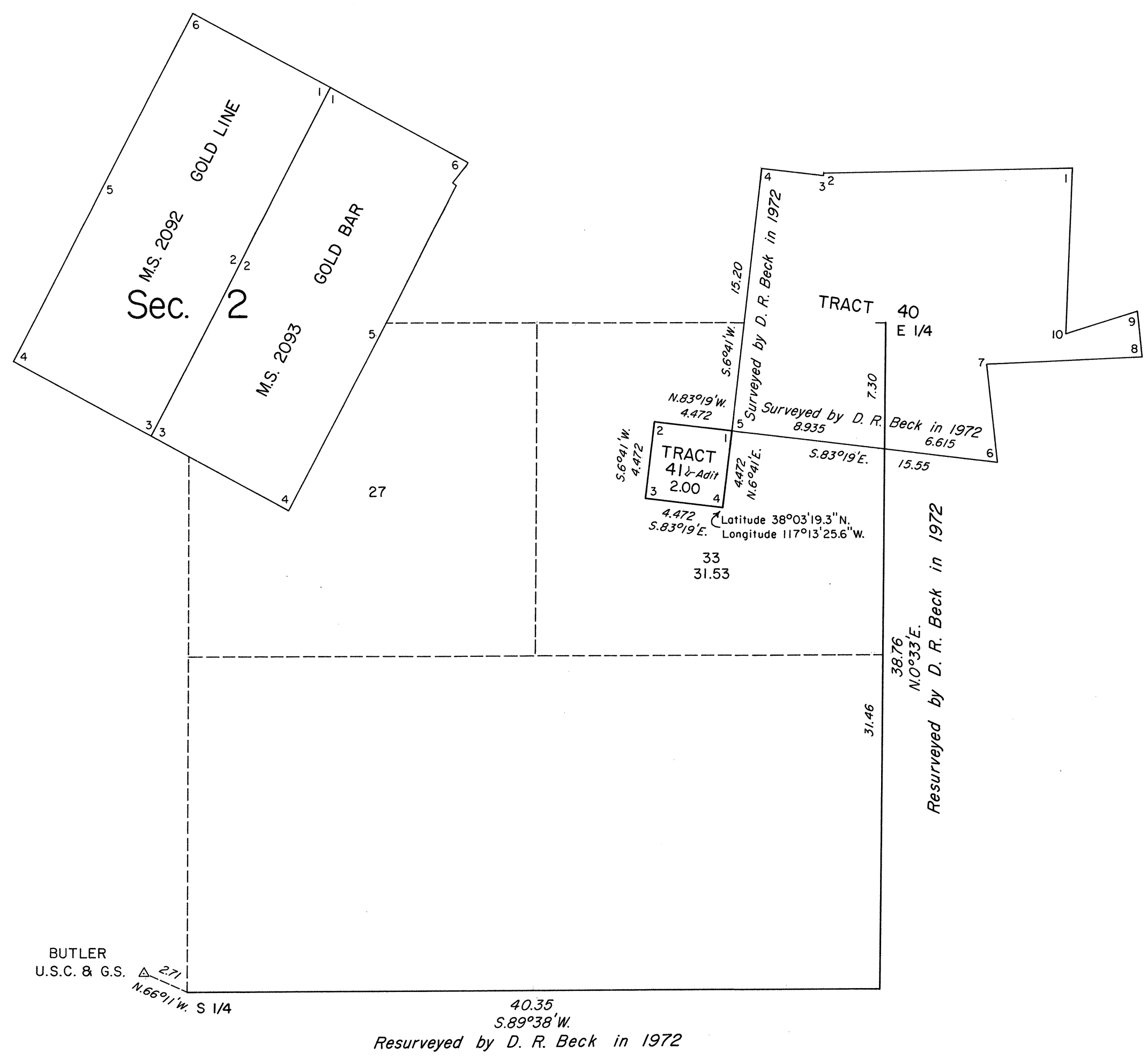


ORIGINAL

TOWNSHIP 2 NORTH, RANGE 42 EAST, OF THE MOUNT DIABLO MERIDIAN, NEVADA
 SURVEY OF TRACT 41 IN SE 1/4 SEC. 2



History of the earlier surveys is contained in the field notes.
 This plat represents a survey of Tract 41, T. 2 N., R. 42 E., Mount Diablo Meridian, Nevada.
 Areas and lottings, except as indicated hereon, are as shown on plat approved May 31, 1881 and the plats accepted January 18, 1974 and August 8, 1979.
 Survey executed by James A. Mack, Cadastral Surveyor, March 27, 1986, under Special Instructions dated March 18, 1986, for Group No. 632, Nevada.

UNITED STATES DEPARTMENT OF THE INTERIOR
 BUREAU OF LAND MANAGEMENT
 Reno, Nevada May 2, 1986

This plat is strictly conformable to the approved field notes, and the survey, having been correctly executed in accordance with the requirements of law and the regulations of this Bureau, is hereby accepted.

For the Director
Lucel E. Bland
 Chief Cadastral Surveyor