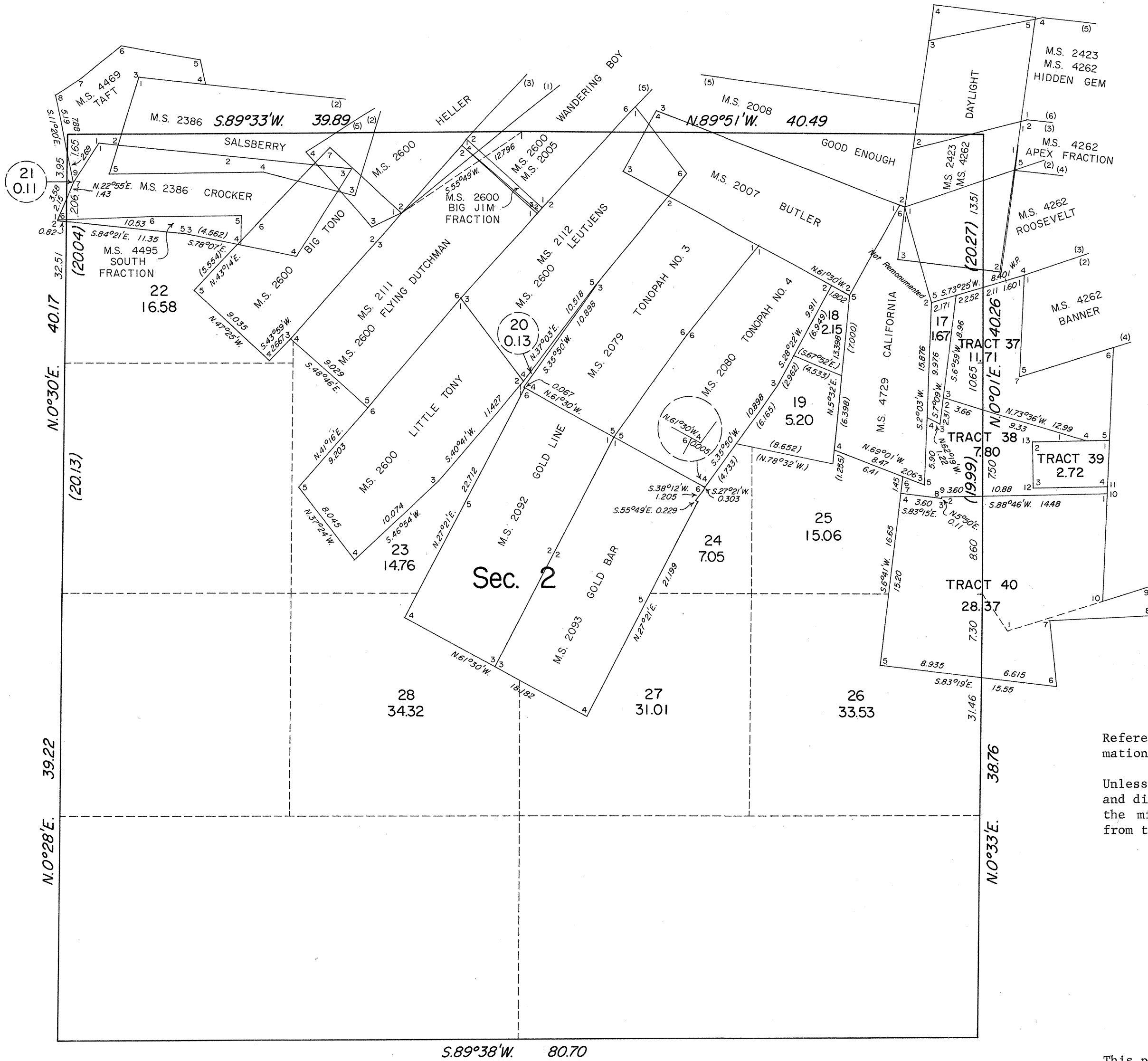
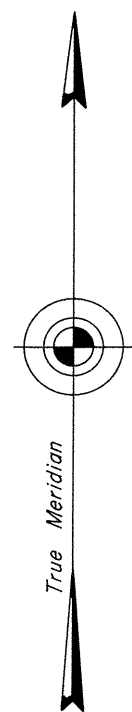


TOWNSHIP 2 NORTH, RANGE 42 EAST, OF THE MOUNT DIABLO MERIDIAN, NEVADA ENLARGED DIAGRAM OF SECTION 2

OFFICIALLY FILED
NEVADA STATE OFFICE
10:00 A.M., March 8, 1974



Reference should be made to Sheet No. 1 for survey information.

Unless otherwise indicated in the field notes, all courses and distances, shown on the plat along the perimeter of the mineral segregation areas, were taken or computed from the appropriate mineral survey record.

UNITED STATES DEPARTMENT OF THE INTERIOR
BUREAU OF LAND MANAGEMENT
Washington, D.C. January 18, 1974

This plat is strictly conformable to the approved field notes, and the survey, having been correctly executed in accordance with the requirements of law and the regulations of this Bureau, is hereby accepted.

For the Director
Clark F. Summers

Chief, Division of Cadastral Survey

