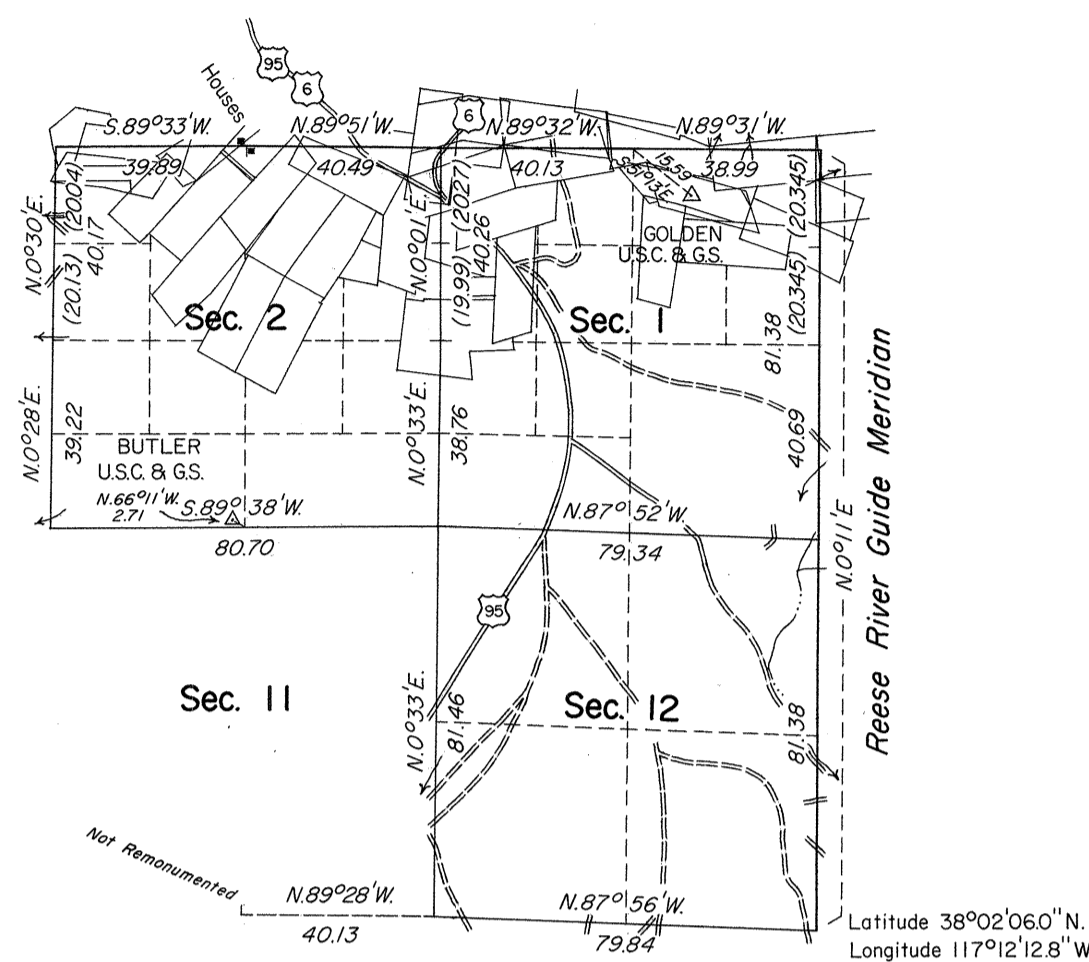


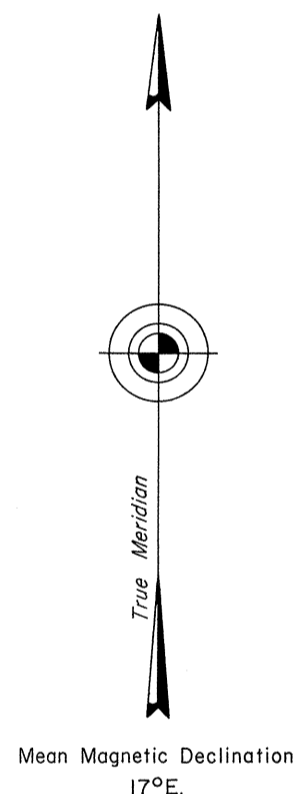
TOWNSHIP 2 NORTH, RANGE 42 EAST, OF THE MOUNT DIABLO MERIDIAN, NEVADA DEPENDENT RESURVEY

OFFICIALLY FILED
NEVADA STATE OFFICE
10:00 A.M. March 8, 1974



Surveyed by J. R. Glover and

G. H. Perrin in 1881



A history of surveys is contained in the field notes.

This plat, in three sheets, represents a dependent re-survey of portions of the east and north boundaries and a portion of the subdivisional lines of T. 2 N., R. 42 E., and the resurvey of a portion of the mineral surveys in sections 1 and 2, T. 2 N., R. 42 E., designed to restore the corners in their original positions according to the best available evidence, and the survey of tracts 37, 38, 39 and 40.

Lottings and areas, except as indicated hereon, are as shown on the plat approved May 31, 1881.

Survey executed by Donald R. Beck, Cadastral Surveyor, June 18, 1972 to April 12, 1973, under Special Instructions dated June 12, 1972, and Supplemental Special Instructions dated December 6, 1972, for Group No. 487, Nevada.

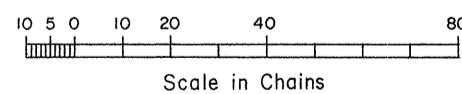
For enlargements of sections 1 and 2, see Sheet Nos. 2 and 3.

UNITED STATES DEPARTMENT OF THE INTERIOR
BUREAU OF LAND MANAGEMENT
Washington, D.C. January 18, 1974

This plat is strictly conformable to the approved field notes, and the survey, having been correctly executed in accordance with the requirements of law and the regulations of this Bureau, is hereby accepted.

For the Director

Chief, Division of Cadastral Survey



Area of Mineral Segregation	386.12 acres
Area of Tract Segregation	50.60 acres
Area Exclusive of Segregations	1,484.34 acres
Total Area Resurveyed	1,921.06 acres