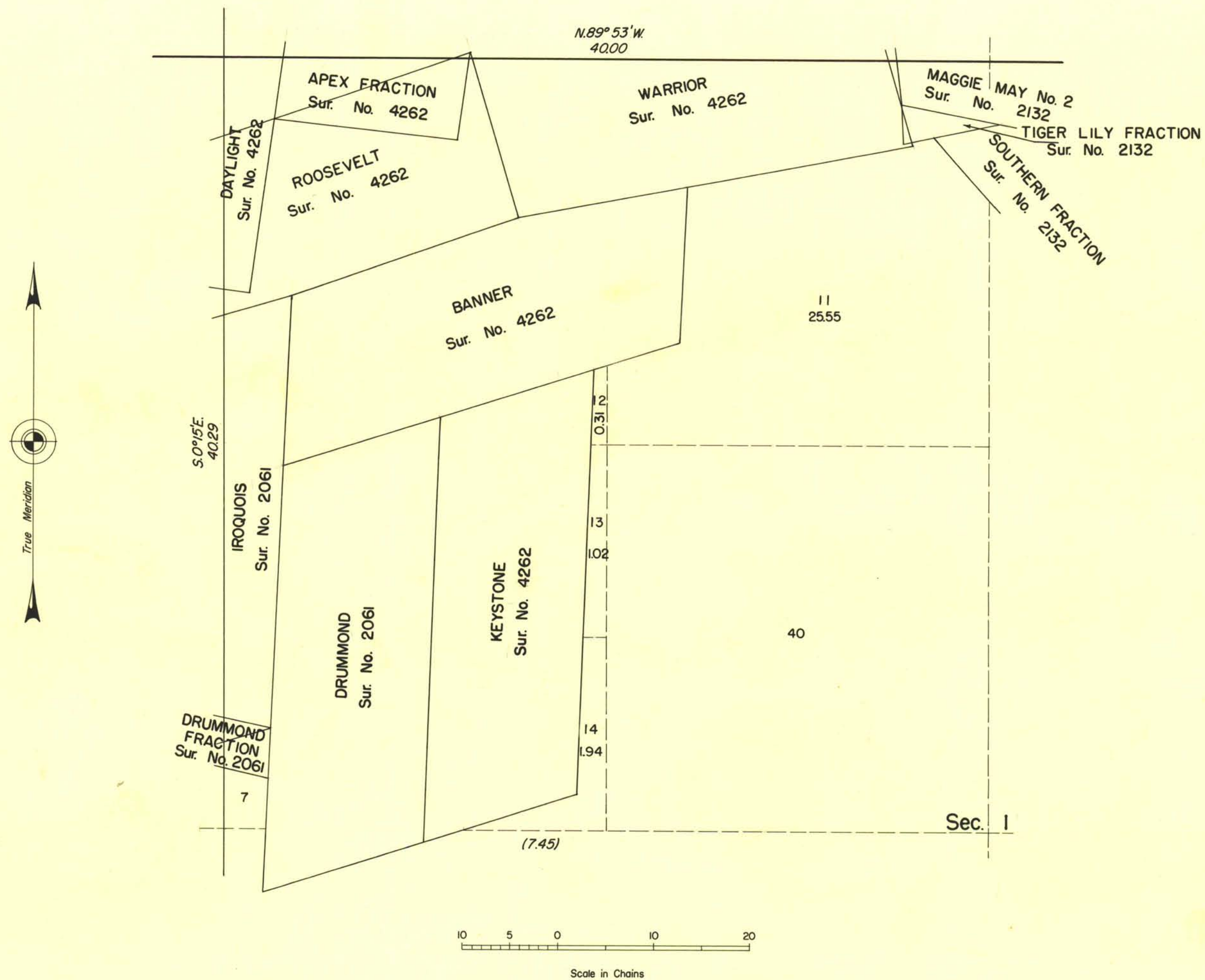


TOWNSHIP 2 NORTH, RANGE 42 EAST, OF THE MOUNT DIABLO MERIDIAN, NEVADA

SUPPLEMENTAL PLAT OF THE NW 1/4, SECTION 1



This supplemental plat showing amended lottings in the NW 1/4 section 1, T. 2 N., R. 42 E., Mt. Diablo Meridian, Nevada, is based upon plat approved May 31, 1881 and mineral survey records.

UNITED STATES DEPARTMENT OF THE INTERIOR
BUREAU OF LAND MANAGEMENT
Washington, D.C. September 29, 1958

This plat, showing amended lottings, is based upon the official records, and having been correctly prepared in accordance with the regulations, is hereby accepted.

For the Director
Carl G. Harvington
Cadastral Engineering Staff Officer

1412a

T2N, R42E.

MS. 1/11