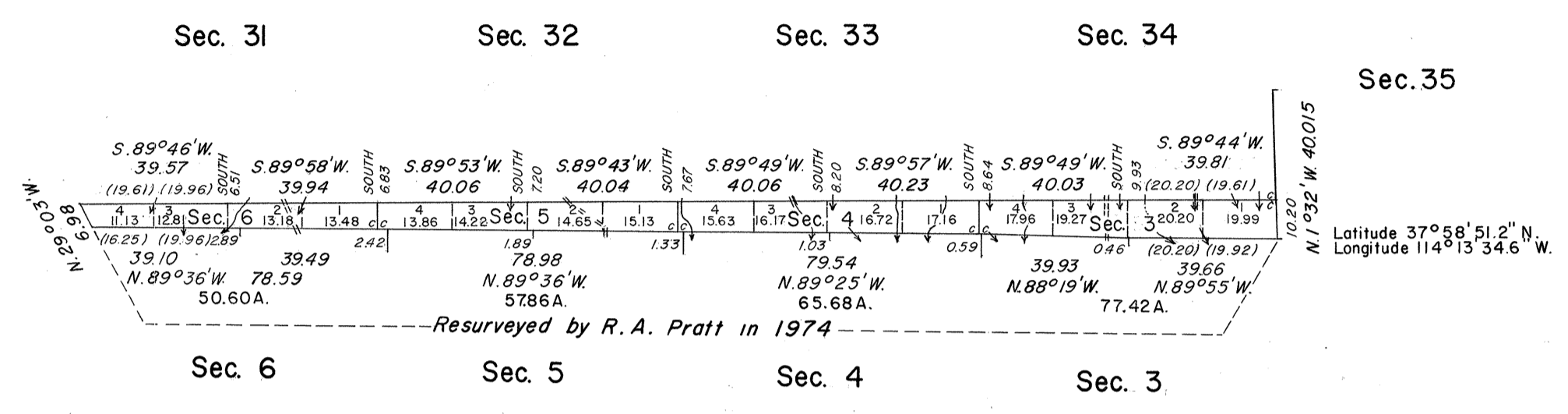


OFFICIALLY FILED
NEVADA STATE OFFICE
10:00 A.M., September 29, 1977

TOWNSHIP 1 1/2 NORTH, RANGE 69 EAST, OF THE MOUNT DIABLO MERIDIAN, NEVADA.

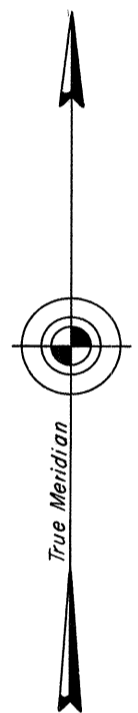


A history of surveys is contained in the field notes.

A dependent resurvey of the north boundary and the west boundary of Sec. 35, T. 2 N., R. 69 E., was executed under this same group and the field notes thereof are included in the notes of T. 2 N., R. 69 E.

This plat represents a survey of the west boundary and the subdivisional lines of T. 1 1/2 N., R. 69 E.

Survey executed by James R. Munson, Cadastral Surveyor, June 2 to June 3, 1975, under Special Instructions dated May 25, 1973, and Supplemental Special Instructions dated March 28, 1975, for Group No. 500, Nevada.



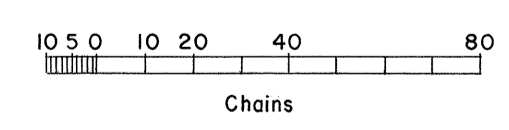
Mean Magnetic Declination
15 1/2 ° E.

UNITED STATES DEPARTMENT OF THE INTERIOR
BUREAU OF LAND MANAGEMENT
Washington, D.C. May 24, 1977

This plat is strictly conformable to the approved field notes, and the survey, having been correctly executed in accordance with the requirements of law and the regulations of this Bureau, is hereby accepted.

For the Director

Bernard W. Hoopes
Chief, Division of Cadastral Survey



Area Surveyed: 251.56 Acres