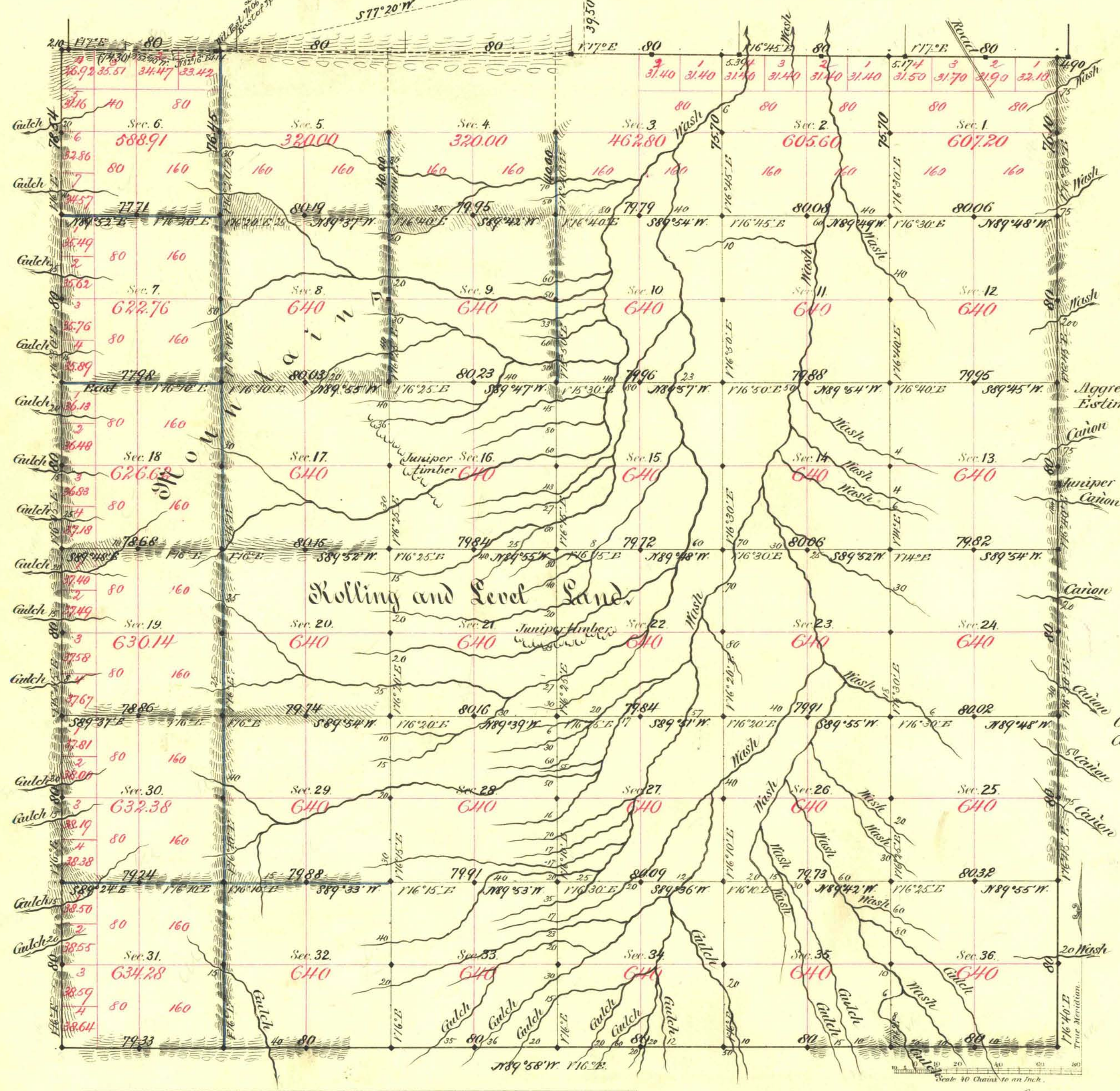


NOTE:  
See Special Survey Report by  
J. C. Clark in June 1919 - re. Freiburg M.N.  
(T. 1 N., R. 25, S. 64 57 E.)

TOWNSHIP N<sup>o</sup> 1 SOUTH RANGE N<sup>o</sup> 57 EAST MOUNT DIABLO MERIDIAN



Aggregate Area of Public Land Surveyed 22050.69 Acres.  
Estimated " Mountains unsurveyed 720.00 "  
Aggregate 22770.69 "

Commenced July 8<sup>th</sup> 1882.  
Completed " 14<sup>th</sup> "

Survey Designated	By Whom Surveyed	Date of Contract	Amount of Survey	When Surveyed
N. Bdy.	Monroe & Bateman	Nov. 12 <sup>th</sup> 1872	36 80 80	1872
E. Bdy.	Reilly & Magee	Feb'y. 22 <sup>nd</sup> 1881	11 77 87	1881
E. "	T. A. Magee	June 21 <sup>st</sup> 1882	5 76 10	1882
Subdiv <sup>ns</sup> black	"	"	45 68 37	July "
blue	"	"	12 71 26	" "
Convergence	"	"	11 70	" "

53  
117  
142

The above Map of Township N<sup>o</sup> 1 South of Range N<sup>o</sup> 57 East of  
Mt. Diablo Meridian is strictly conformable to the field  
notes of the survey thereof on file in this Office, which have been examined and approved.  
Surveyor General's Office, }  
Reno, Nevada }  
Sept. 15<sup>th</sup> 1882 }  
E. J. O'Neil }  
Sur. Gen. Nevada }