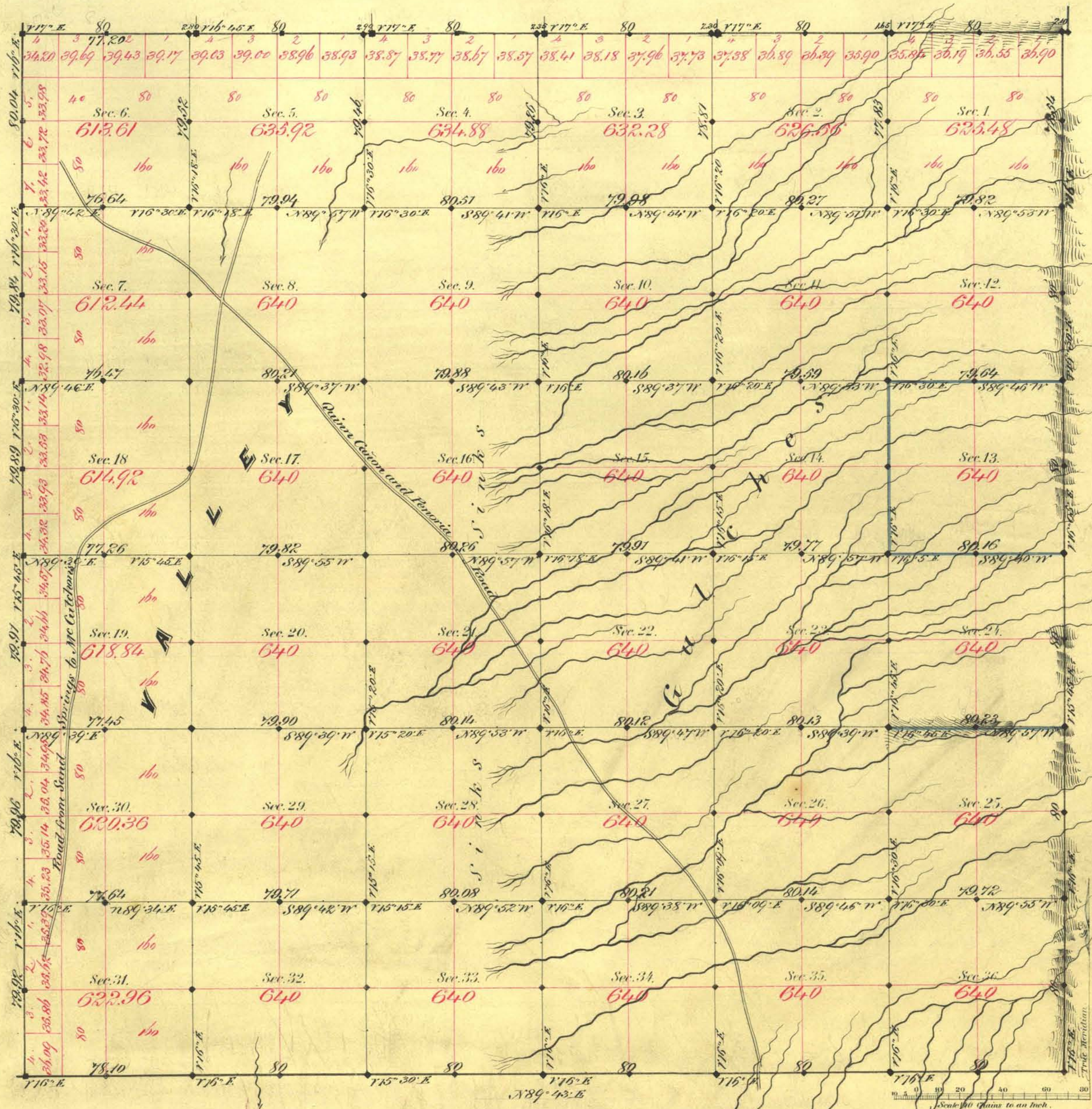


TOWNSHIP N° 1 SOUTH RANGE N° 56 EAST MOUNT DIABLO MERIDIAN



Aggregate Area of Public Land Surveyed 22,858.25 Ac.

Commenced April 20th 1881  
Completed " 25th "

Field is not noted with a variation of 15° 30'

Surveys Designated	By Whom Surveyed	Date of Contract	Amount of Surveys	When Surveyed
N. City.	Morrey	Oct 12 1869	26 50 50	1860
" "	Morrey & Johnson	Nov. 12th 1872	4 00 00	1872
M. (retract), S. & C. and division of 5	Rally & Magee	Feb. 23rd 1881	17 77 20	1881
Div. 10	"	"	55 60 61	April
Conveyance.	"	"	4 00 03	"
	"	"	12 09	"

79  
19  
53  
17  
0  
0  
0

The above Map of Township N° 1 South of Range N° 56 East of Mount Diablo Meridian is strictly conformable to the field notes of the survey thereof on file in this Office, which have been examined and approved.  
Surveyor General's Office, }  
Virginia City Nev }  
July 12th 1881 }  
C. S. Pavy }  
Sur. Gen.