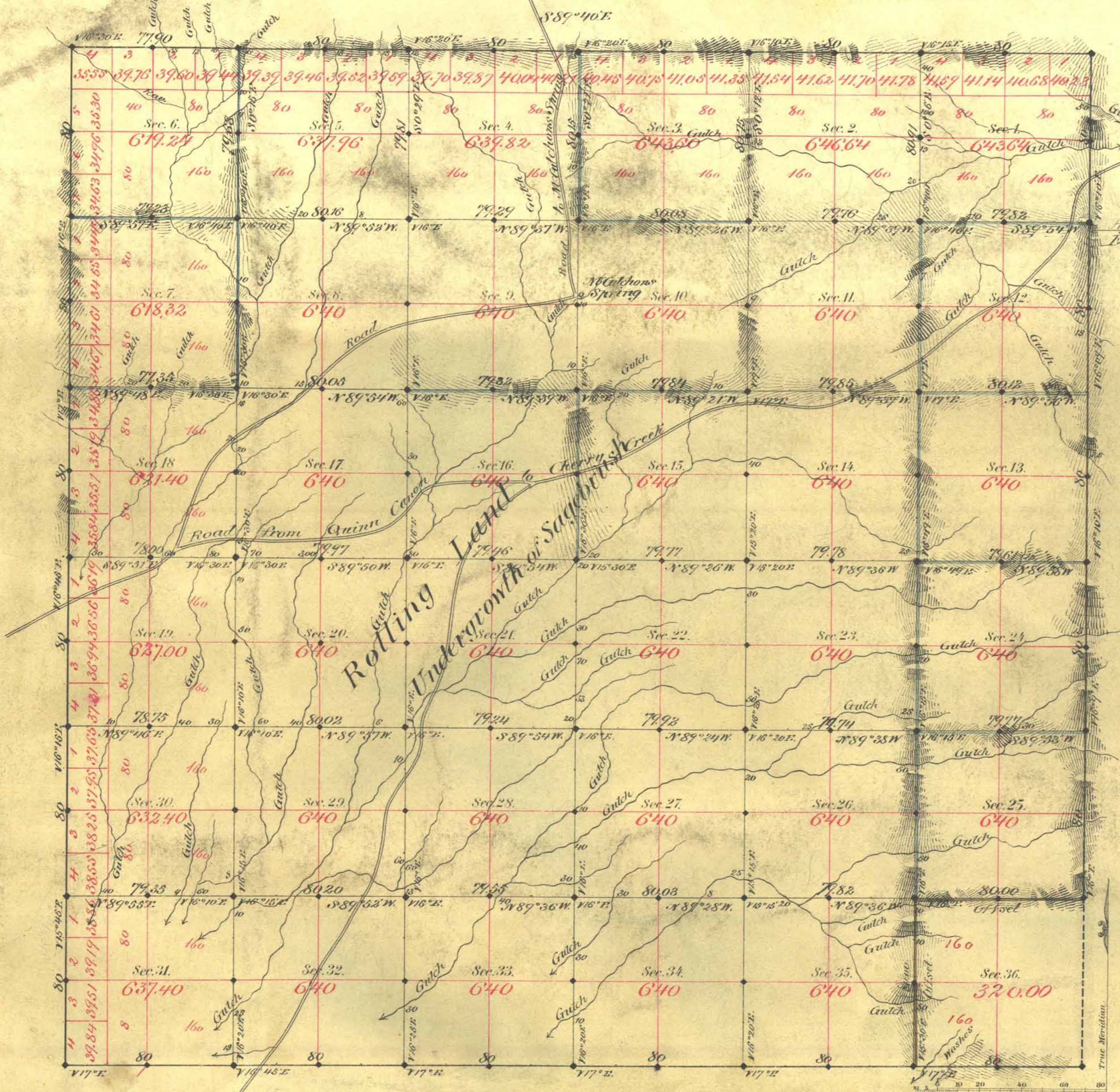


TOWNSHIP N<sup>o</sup> 1 NORTH RANGE N<sup>o</sup> 56 EAST MOUNT DIABLO MERIDIAN



Aggregate Area of Public Land Surveyed 2267.42 Acres  
 Estimated - Unsurveyed 320.00  
 Aggregate 2296.42

Survey Commenced Oct. 7<sup>th</sup> 1881  
 " Completed " 13<sup>th</sup> "

Surveys Insinuated	By Whom Surveyed	Date of Contract	Amount of Surveys	When Surveyed
W Boundary	Monroe	Oct. 1 <sup>st</sup> 1869	76-86-35	
S. do	Monroe's Bateman	Nov. 1 <sup>st</sup> 1872	6-00-00	
N.E. do	Reilly & Magee	April 27 <sup>th</sup> 1881	11-77-90	1881
Subdiv. Black	"	"	40-74-18	"
" Blue	"	"	16-72-97	"
Offset lines brown	"	"	5-00-00	"

No. of Corn.  
 79  
 31  
 53  
 126  
 1  
 1

The above Map of Township N<sup>o</sup> 1 North of Range N<sup>o</sup> 56 East Mt Diablo Meridian is strictly conformable to the field notes of the survey thereof on file in this Office, which have been examined and approved.  
 Surveyors General's Office,  
 Virginia City Nevada  
 December 13<sup>th</sup> 1881.  
 John Davis Sur. Genl

Note: See Special Survey by J. C. Clark in 1919 re Freiburg