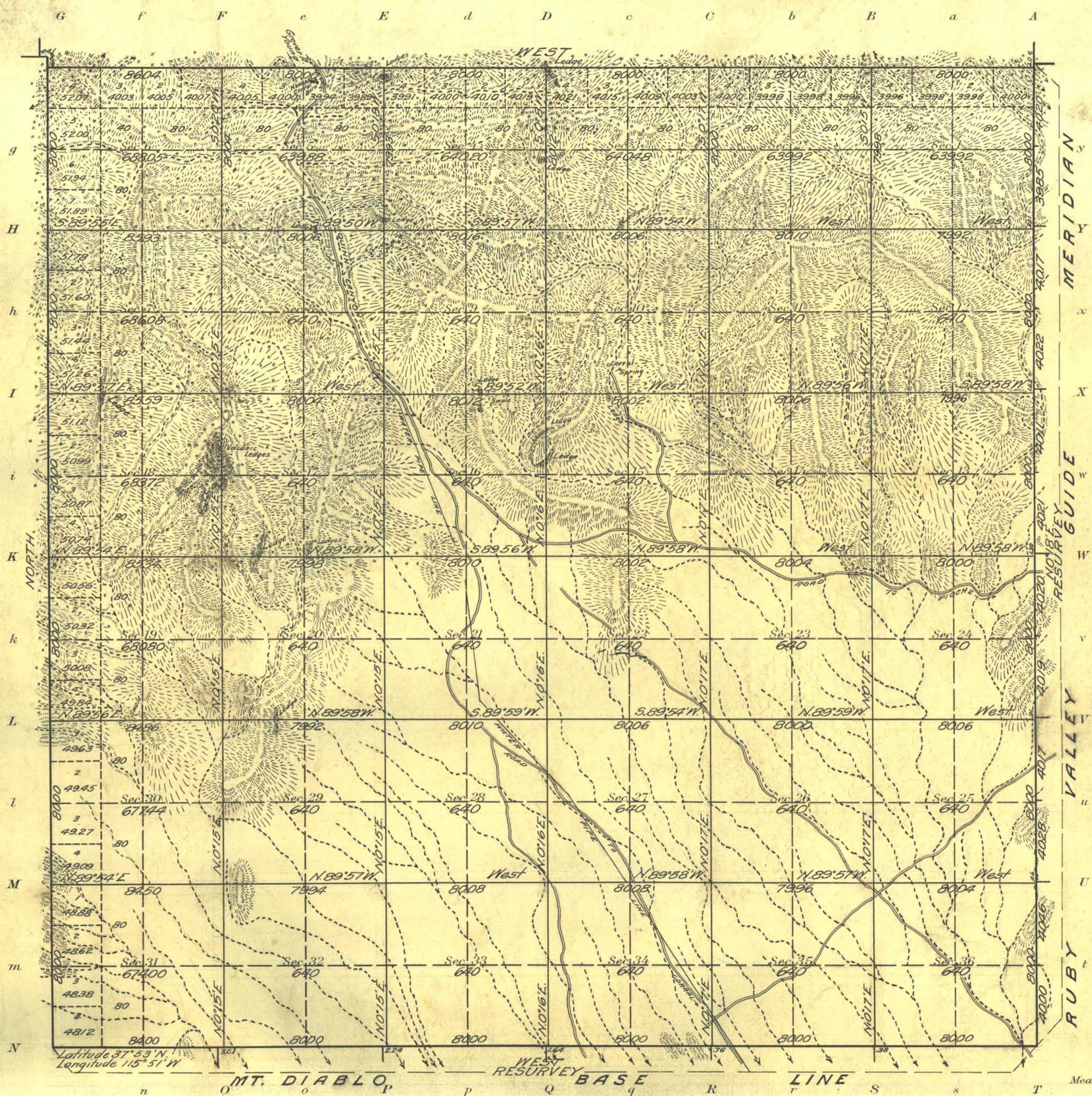


Township N^o 1 North Range N^o 55 East M^t Diablo Meridian, Nevada



Areas in Acres	
Public Land	23290.49
Indian Reservation	
Indian Allotments	
Mineral Claims	
Water Surface	
Total Area	23290.49

Scale 40 Chains to an inch
 Mean Magnetic Declination 16° 32' E
 Longitude 115° 44' W.

Surveys Designated	By Whom Surveyed	Group	Amount of Surveys			When Surveyed		
			No.	Date of instructions	Mls.	chs.	fks.	When Begun
M ^t Diablo Base Line Res.	Winfred A. Pray	23	February 17, 1913	6	04	00	Nov. 17, 1913	Nov. 17, 1913
Ruby Valley G.M. Res.		6		6	00	00	Nov. 13, 1913	Nov. 15, 1913
Nand M. Boundary		12		12	06	04	Nov. 17, 1913	Nov. 19, 1913
Subdivision	Winfred A. Pray and Edward R. Eubank	60		60	27	17	Nov. 20, 1913	June 24, 1914

The above map of Township No. 1 North Range No. 55 East of the M^t Diablo Meridian Nevada is strictly conformable to the field notes of the survey thereof on file in this office, which have been examined and approved
 U.S. Surveyor General's Office.
 Reno, Nevada, August 17, 1915

John B. Sullivan
 Surveyor General.

NOTE: See special survey by J. Clark in 1919 re Freiburg.