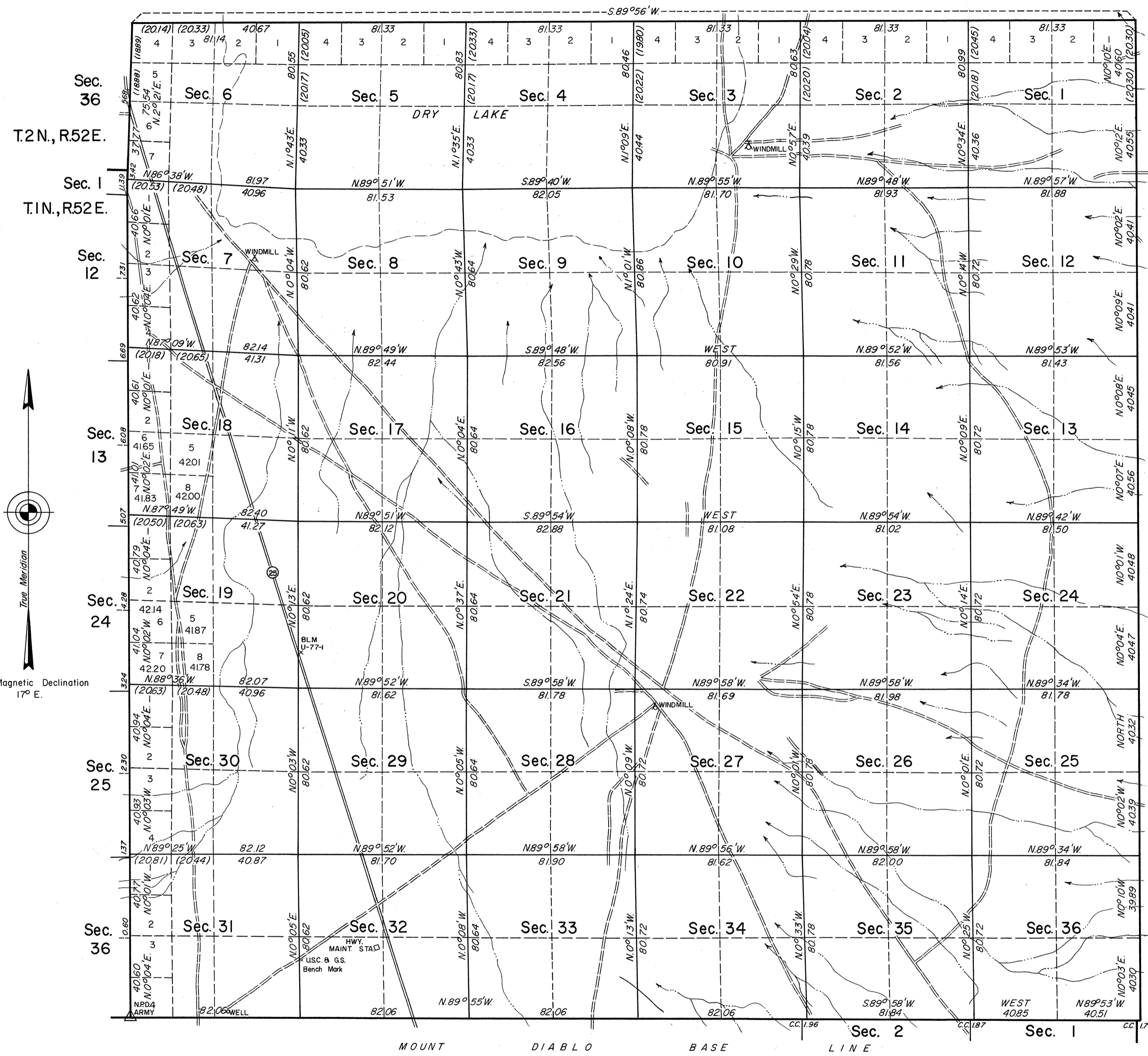


TOWNSHIP 1 NORTH, RANGE 53 EAST, OF THE MOUNT DIABLO MERIDIAN, NEVADA.

DEPENDENT RESURVEY

OFFICIALLY FILED
NEVADA LAND OFFICE
10:00 A.M. May 15, 1970



History of the earlier surveys is contained in the field notes.

This plat represents the dependent resurvey of the exterior and subdivisional lines of T. 1 N., R. 53 E., designed to restore the corners in their true original locations according to the best available evidence.

Lottings and areas (except as shown hereon) are as shown on the plat approved November 14, 1881.

This resurvey was executed by James R. Munson, Cadastral Surveyor, April 26, 1966, to June 1, 1966, under Special Instructions dated March 25, 1966, for Group No. 435, Nevada.

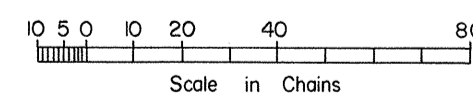
UNITED STATES DEPARTMENT OF THE INTERIOR
BUREAU OF LAND MANAGEMENT
Washington, D. C. April 20, 1970

This plat is strictly conformable to the approved field notes, and the survey, having been correctly executed in accordance with the requirements of law and the regulations of this Bureau, is hereby accepted.

For the Director
Latitude 37° 53' 50.9" N.
Longitude 115° 57' 09" W.

Clark F. Sumner

Chief, Division of Cadastral Survey



Area Resurveyed 23,053.10 Acres

T. 1 N. R. 53 E.