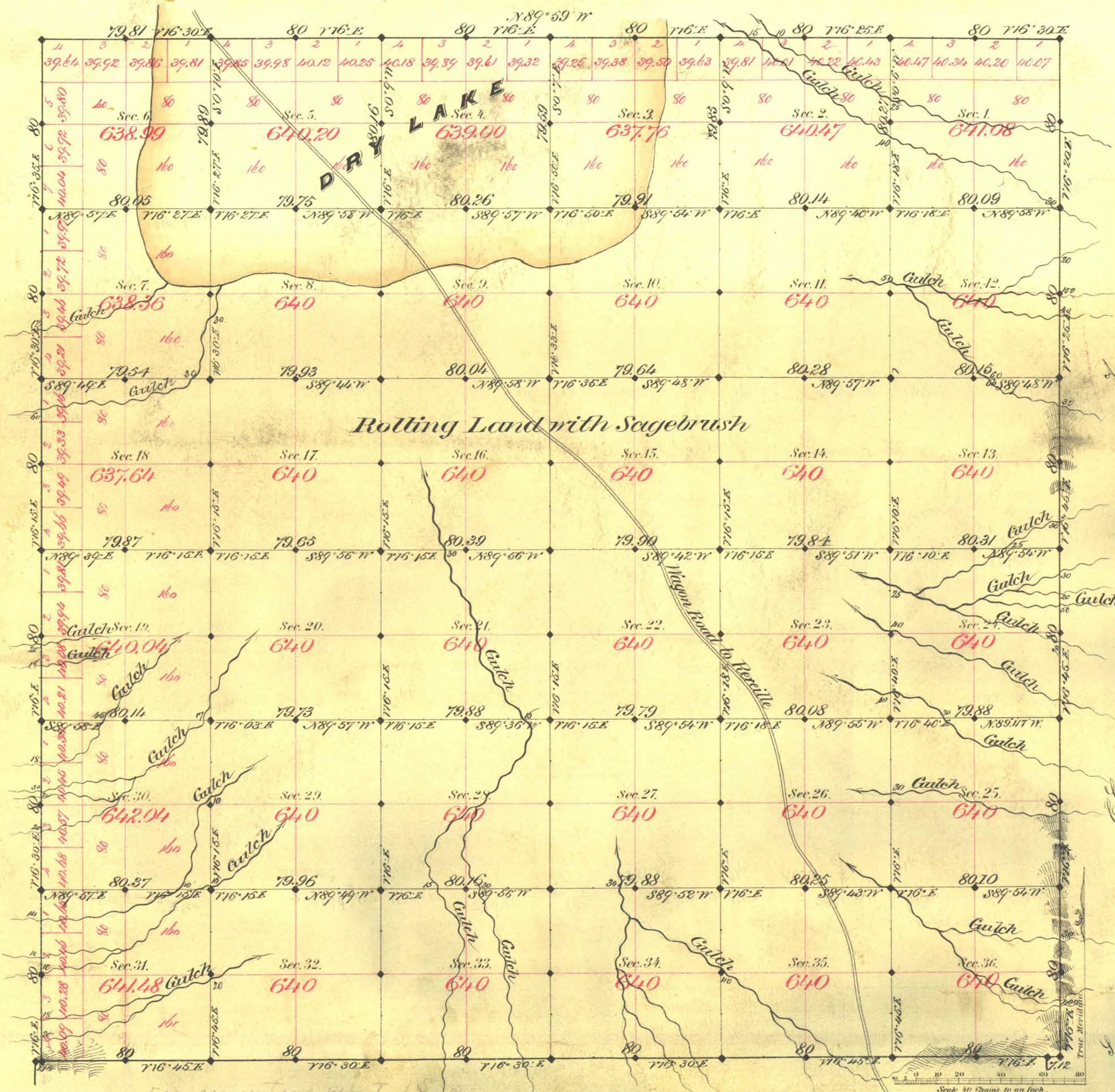


TOWNSHIP N^o 1 NORTH RANGE N^o 53 EAST MOUNT DIABLO MERIDIAN



Aggregate Area of Public Land Surveyed 23,037.06 Acres

Commenced July 20th 1881
Completed " 26th "

Subdivisions not noted run with a Var. of 16°30' East

Survey Designated	By Whom Surveyed	Date of Contract	Amount of Surveys	When Surveyed	Acres
Bay	Shelby Hooper	Feb. 23 rd 1881	5- 88- 86	1881	117
N. Driv. Bay	"	April 27 th 1881	17- 79- 81	July "	136
Subdivisions	"	"	59- 79- 72	"	"

The above Map of Township N^o 1 North of Range N^o 53 East, Mount Diablo Meridian is strictly conformable to the field notes of the survey thereof on file in this Office, which have been examined and approved.

Surveyor General's Office,
Virginia City, Nev.
November 14th 1881

C. A. Pearce
Sur. Gen. Nev.