

TOWNSHIP 1 NORTH, RANGE 47 EAST, OF THE MOUNT DIABLO MERIDIAN, NEVADA. DEPENDENT RESURVEY

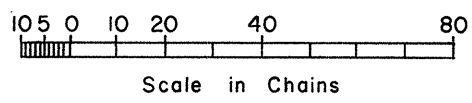
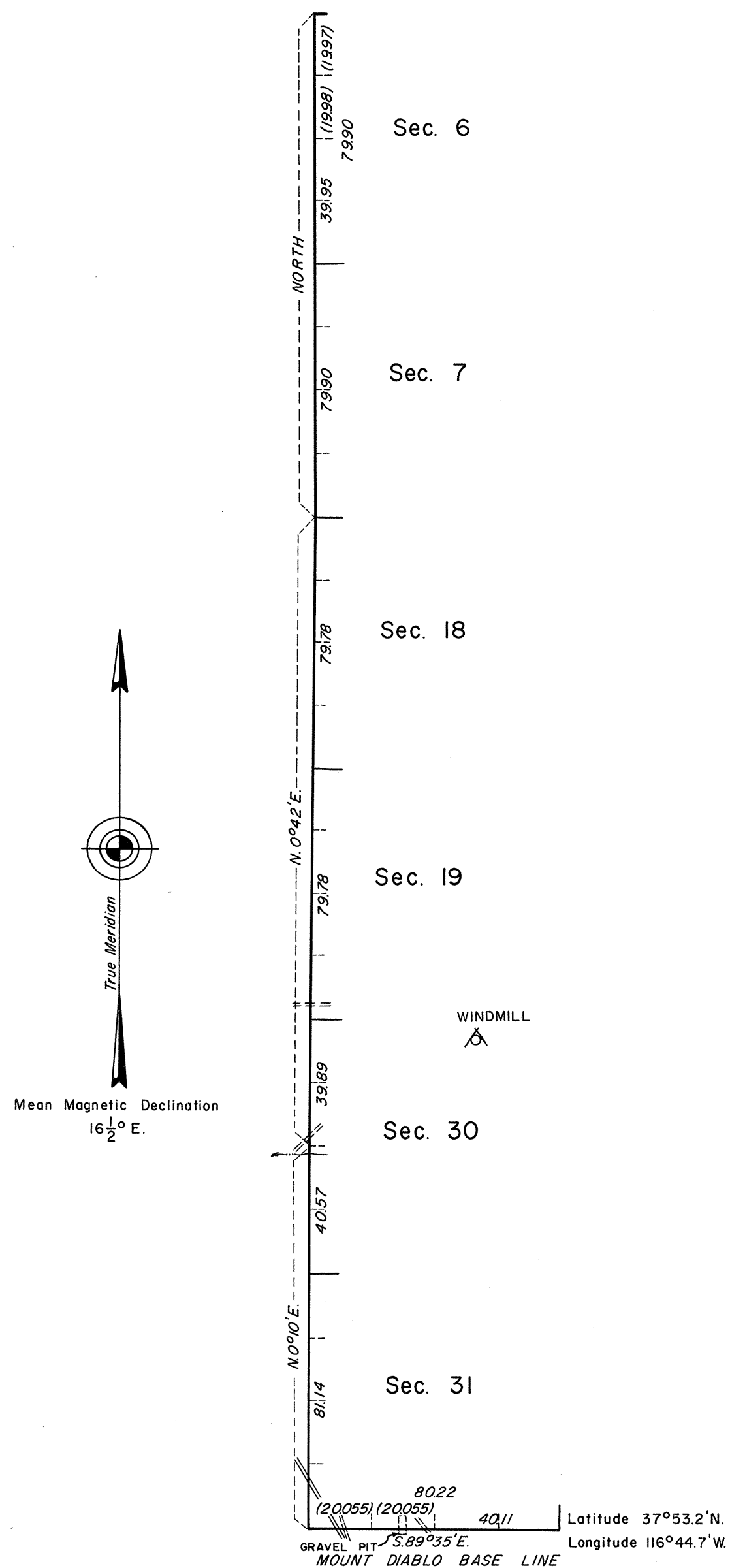
OFFICIALLY FILED
NEVADA LAND OFFICE
10:00 A.M. July 24, 1970

A history of the earlier survey is contained in the field notes.

A dependent resurvey of the west boundary was executed concurrently under T. 1 N., R. 46 E., of this group.

This plat represents a dependent resurvey of a portion of the Mount Diablo Base Line through Range 47 East, designed to restore the corners in their true original locations according to the best available evidence.

This resurvey was executed by Dennis D. Bland, Cadastral Surveyor, August 7, 1968, to October 15, 1968, under Special Instructions dated March 22, 1968, for Group No. 456, Nevada.



UNITED STATES DEPARTMENT OF THE INTERIOR
BUREAU OF LAND MANAGEMENT
Washington, D. C. June 10, 1970

This plat is strictly conformable to the approved field notes, and the survey, having been correctly executed in accordance with the requirements of law and the regulations of this Bureau, is hereby accepted.

For the Director

Chief, Division of Cadastral Survey

TINR47E