

# TOWNSHIP 1 NORTH, RANGE 46 EAST, OF THE MOUNT DIABLO MERIDIAN, NEVADA. DEPENDENT RESURVEY

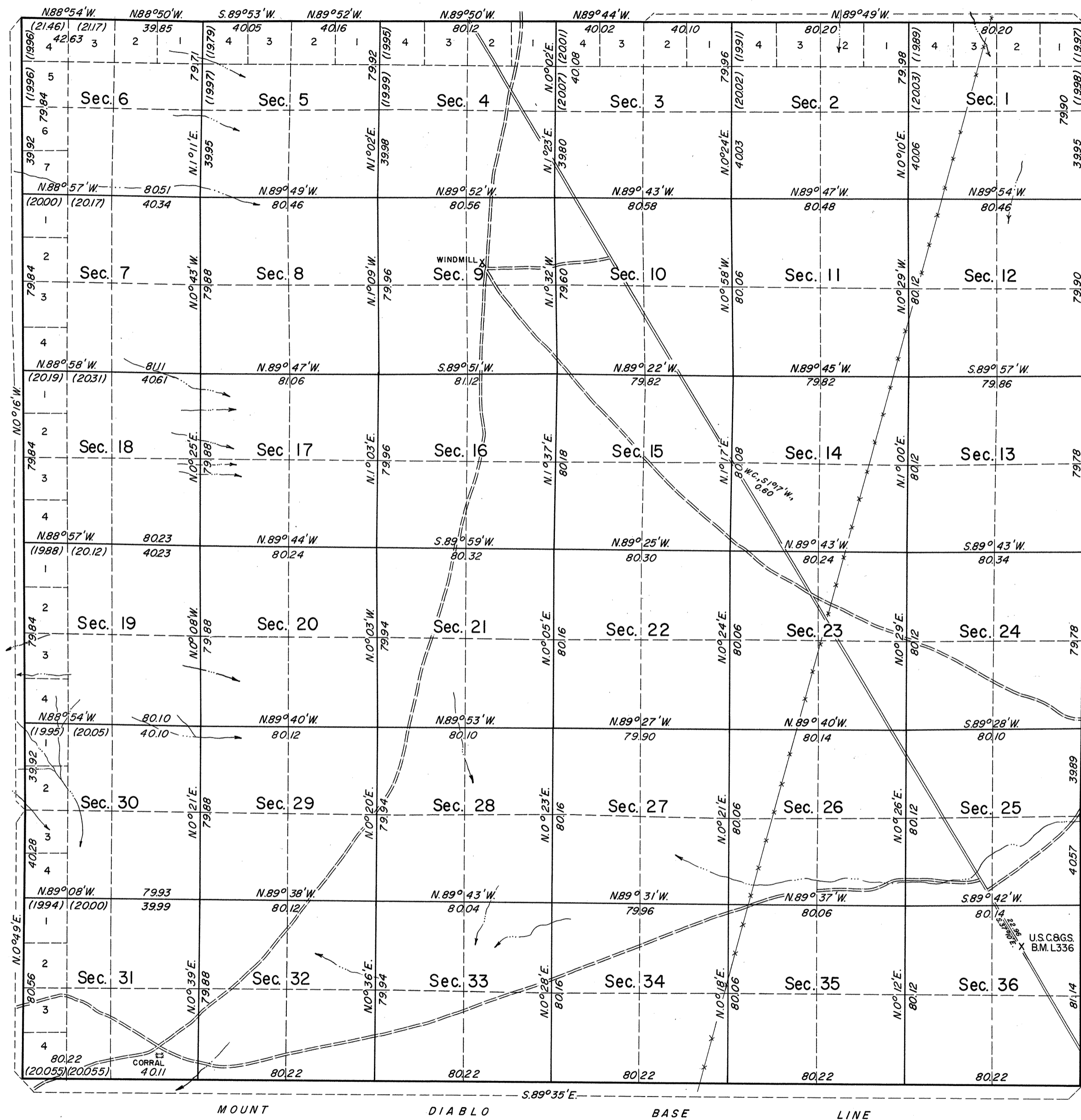
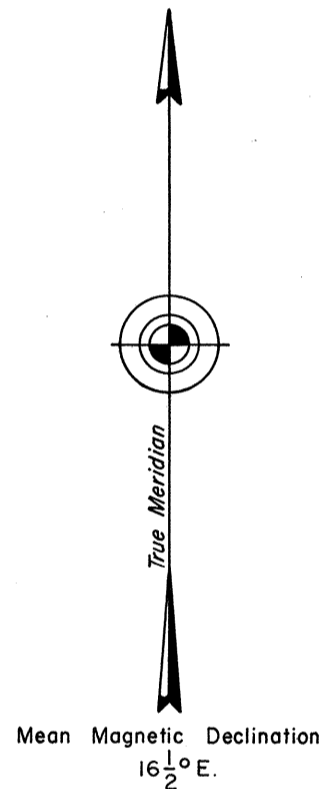
OFFICIALLY FILED  
NEVADA LAND OFFICE  
10:00 A.M. July 27, 1970

A history of the earlier surveys is contained in the field notes.

This plat represents a dependent resurvey of the east, west, and north boundaries and subdivisional lines of T. 1N., R. 46E., designed to restore the corners in their true original locations according to the best available evidence.

Lottings and areas are as shown on the plat approved October 7, 1881.

This resurvey was executed by Dennis D. Bland, Cadastral Surveyor, August 7, 1968, to October 15, 1968, under Special Instructions dated March 22, 1968, for Group No. 456, Nevada.



Latitude 37°53.2' N.  
Longitude 116°45.8' W.

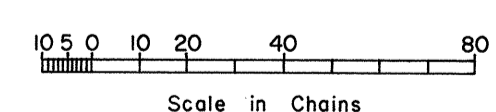
UNITED STATES DEPARTMENT OF THE INTERIOR  
BUREAU OF LAND MANAGEMENT  
Washington, D. C. June 10, 1970

This plat is strictly conformable to the approved field notes, and the survey, having been correctly executed in accordance with the requirements of law and the regulations of this Bureau, is hereby accepted.

For the Director

*Clark F. Sumner*

Chief, Division of Cadastral Survey



Area Resurveyed 23,031.36 Acres

T 1 N R 46 E