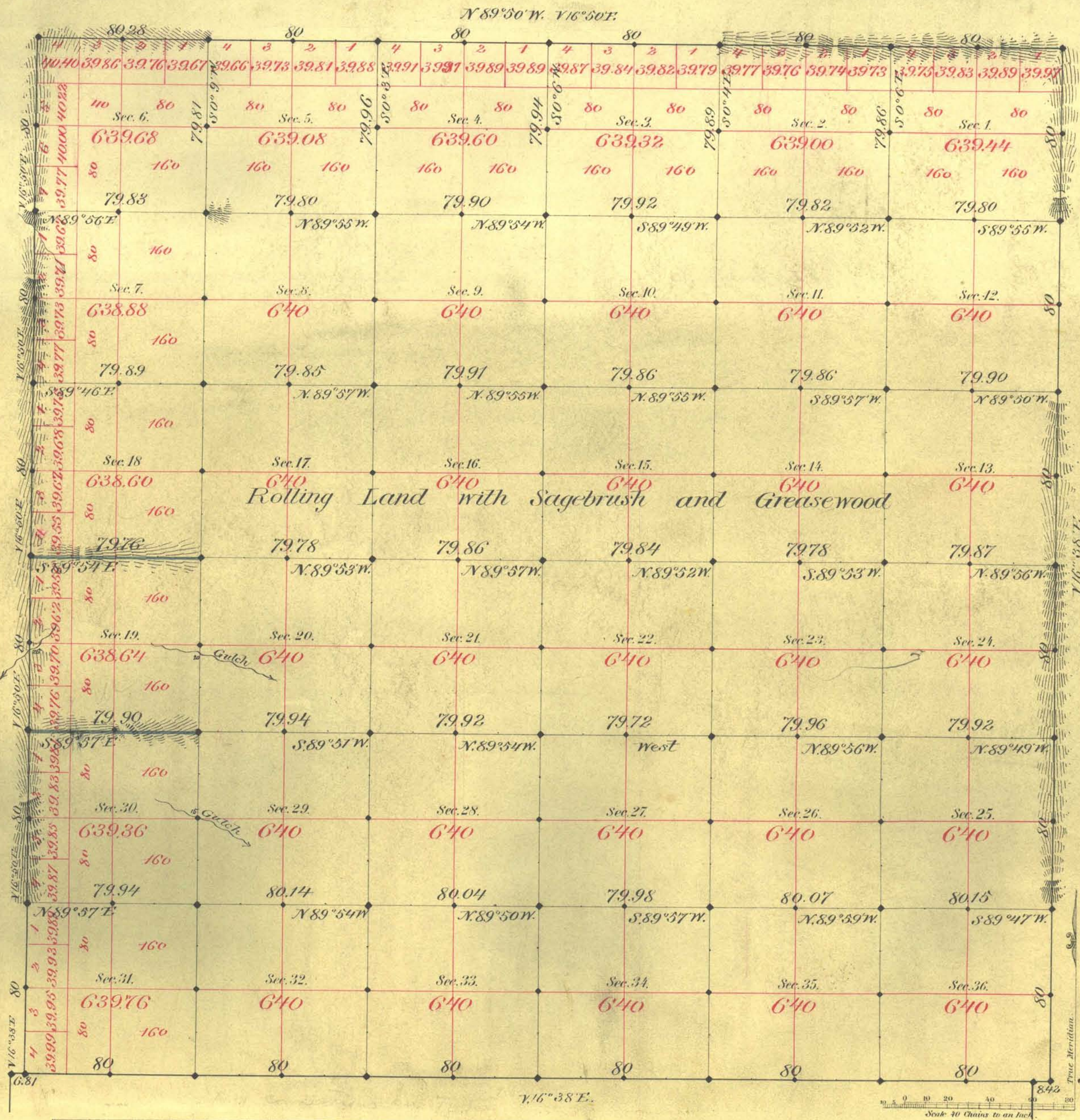


TOWNSHIP N^o 1 NORTH RANGE N^o 46 EAST MOUNT DIABLO MERIDIAN



Aggregate Area of Public Lands Surveyed 23031.36 Acres

Commenced August 9th 1881
Completed " 15th "

Subdivision Lines run with Variation 16° 38' East.

Survey Designated	By Whom Surveyed	Date of Contract	Amount of Survey	When Surveyed	7 th Cor.
Township lines	A. Tweed	Mar. 22 1881	24 00 00	1881	113
Subds. black	"	" " "	57 76 71	August "	"
" blue	"	" " "	1 79 66	" "	"

The above Map of Township N^o 1 North of Range N^o 46 East Mount Diablo Meridian is strictly conformable to the field notes of the survey thereof on file in this Office, which have been examined and approved.

Surveyor General's Office,
Virginia City, Nevada }
October 7th 1881

C. S. Davis,
Sur. Gen. Nev.

T1N, R46E

A. L. Hancock & Co. Lith. S. T.