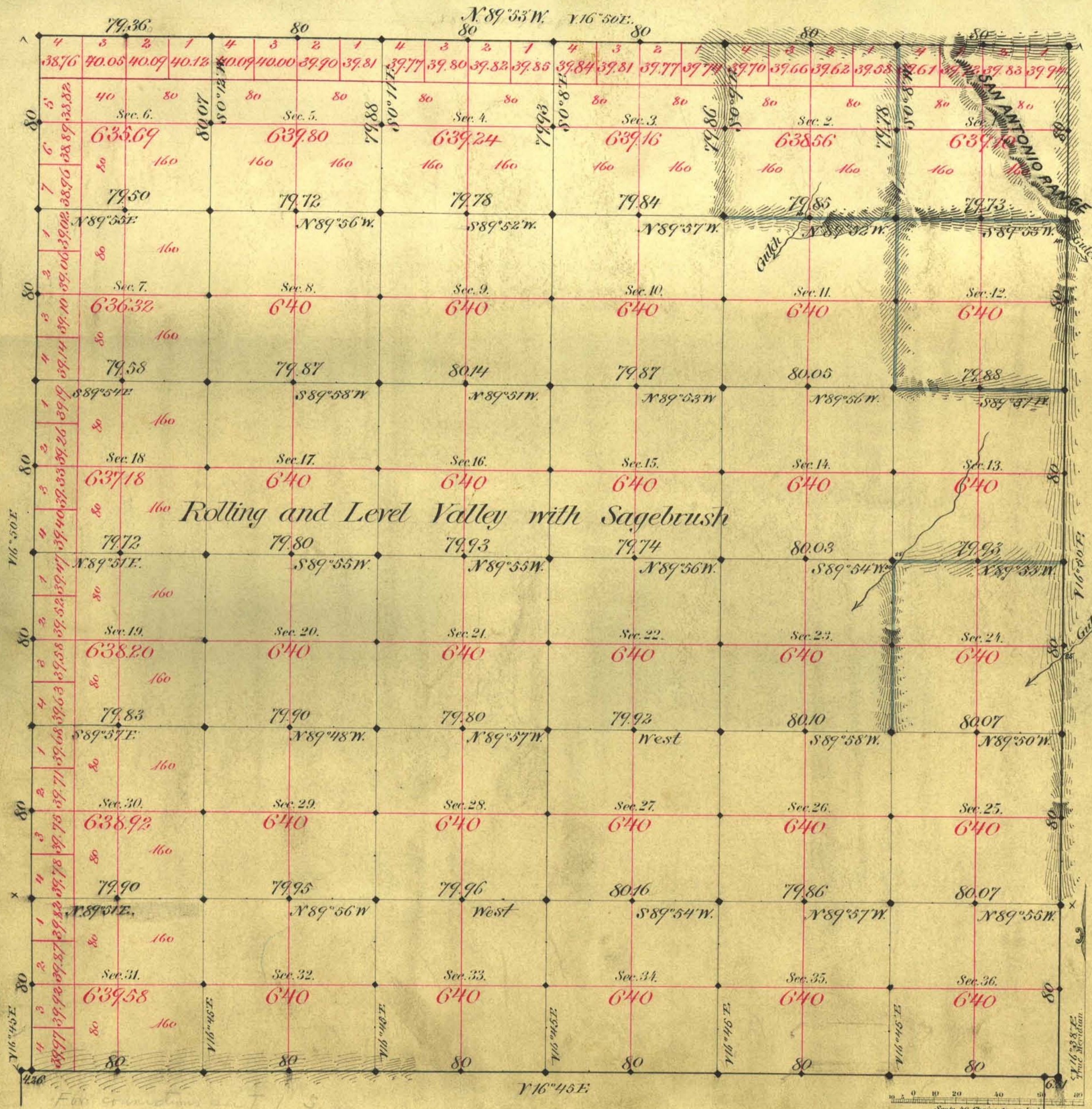


TOWNSHIP N<sup>o</sup> 1 NORTH RANGE N<sup>o</sup> 45 EAST MOUNT DIABLO MERIDIAN



Aggregate Area of Public Lands 23021.75 Acres

Survey Commenced August 2<sup>nd</sup> 1881  
Completed " 5<sup>th</sup> "

Subdivisions not otherwise noted run with Var. 16° 50' East

Survey Designated	By Whom Surveyed	Date of Contract	Amount of Survey	When Surveyed	7 <sup>th</sup> Cor.
S. boundary	A. J. Cattum	Mar. 2 <sup>nd</sup> 1881	75-80-85	1881	116
NE & W. bdy	" "	" 22 <sup>nd</sup> "	17-79-83	"	118
Subdivisions, black	" "	" " "	82-76-83	August "	"
" blue	" "	" " "	6-79-17	" "	"

The above Map of Township N<sup>o</sup> 1 North of Range N<sup>o</sup> 45 East Mount Diablo Meridian is strictly conformable to the field notes of the survey thereof on file in this Office, which have been examined and approved.

Surveyor General's Office,  
Virginia City Nevada  
October 7<sup>th</sup> 1881

C. J. Davis  
Sur. Gen. Nev.