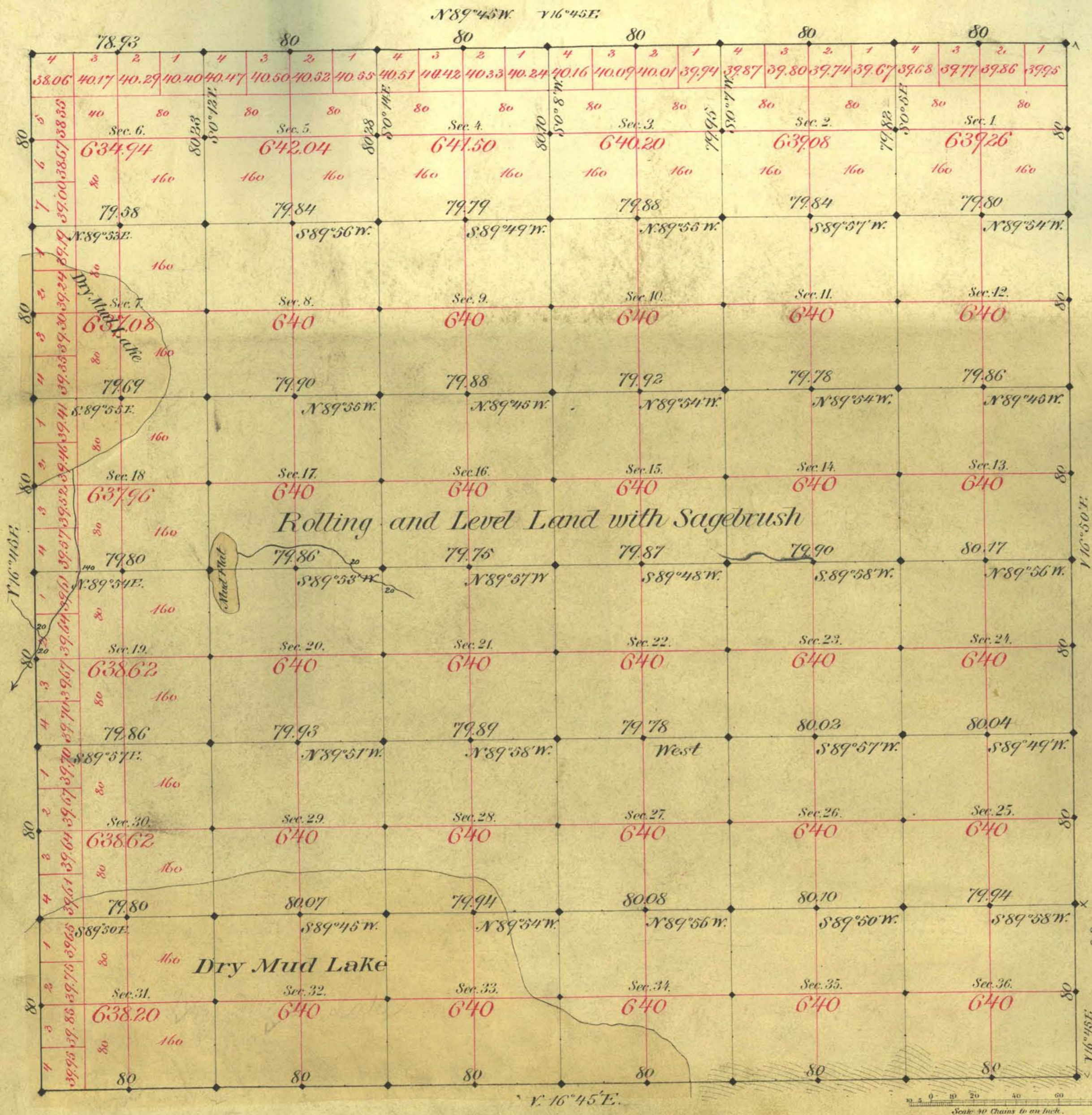


TOWNSHIP N^o 1 NORTH RANGE N^o 44 EAST MOUNT DIABLO MERIDIAN



Aggregate Area of Public Lands Surveyed 23007.50 Acres

Survey Commenced July 25th 1881
Completed August 1st

Subdivisions run with Var. 16°45'E.

Surveys Destinated	By Whom Surveyed	Date of Contract	Amount of Surveys	When Surveyed
Boundary N.E. & W.	A. L. Tuttle	Mar. 2 nd 1881	76 50 50	1881
Subdivisions	"	" " "	59 76 94	July 1881

N^o Cont
116
118

The above Map of Township N^o 1 North of Range N^o 44 East Mount Diablo Meridian is strictly conformable to the field notes of the survey thereof on file in this Office, which have been examined and approved.

Surveyor General's Office,
Chicago, Ill.,
October 1st 1881.

E. S. Davis
Sur. Gen. Ill.