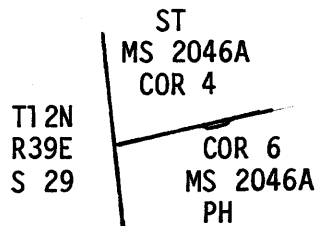


RETRACEMENT AND REMONUMENTATION OF
CERTAIN CORNERS OF M.S. NO. 2046A, STOKES PLACER

CHAINS

At the corner point

Set an aluminum post, 30 ins. long, 2½ ins. diam., 16 ins. in the ground to solid rock and in a mound of stone, 3 ft. base to top, with aluminum cap mkd.



1987

Reset the original wooden post and set a steel fence post, 5 ft. long, alongside the aluminum post.

Reset the iron post inverted inside the aluminum post.

GENERAL DESCRIPTION

The area surveyed and resurveyed within T. 12 N., R. 39 E., is mostly rolling with the southeast portion being rolling mountains. The elevation ranges from about 6,200 to 7,000 ft. above sea level. The soil varies from sandy clay loam in the lower elevations to rocky in the higher elevations. The vegetation consists of sagebrush, shadscale, rabbit brush, Brigham tea and native grass. There are scattered stands of juniper and pinon pine on the east side of the Township.

There has been mining activity in the Berlin area.

Access into the township is provided by numerous improved and desert trail roads.