

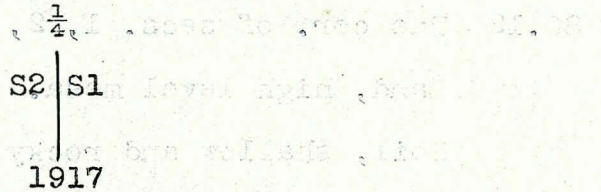
Chains

From the cor. of secs. 1, 2, 35 and 36 on the N. bdy. of the Tp.

S. 0° 01' E. bet. secs. 1 and 2.

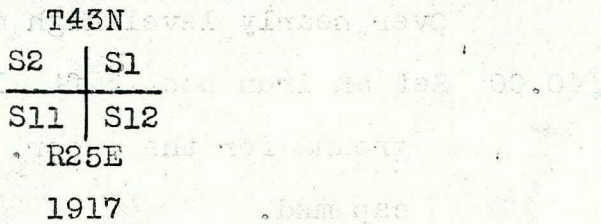
Over nearly level mesa land.

40.00 Set an iron post 3 ft. long, 1 in. diam., 4 ins. in the ground to solid rock and in a mound of stone, for the 1/4 cor. of secs. 1 and 2, with brass cap mkd.



and raise a mound of stone, 2 ft. base, 1 1/2 ft. high, W. of cor.

80.00 Set an iron post 3 ft. long, 2 ins. diam., 14 ins. in the ground to solid rock and in a mound of stone, for the cor. of secs. 1, 2, 11 and 12, with brass cap mkd.



and raise a mound of stone, 2 ft. base, 1 1/2 ft. high, W. of cor.

Land, nearly level mesa.

Soil, shallow and rocky heavy clay loam, 6 to 10 ins. deep, rocky clay subsoil on bed rock.

No timber.

N. 89° 58' E. on a random line bet. secs. 1 and 12.

40.00 Set temp. 1/4 sec. cor.

80.12 Intersect E. bdy. of the Tp., 25 lks. N. of the cor. of secs. 1, 6, 7 and 12.

Thence,

West on a true line bet. secs. 1 and 12.

Over nearly level mesa land.

40.06 Set an iron post 3 ft. long, 1 in. diam., 16 ins. in the