

Survey of the West Boundary of T. 9 S., R. 62 E.

chains

S. of cor.

Land, rolling. Soil; rocky, sandy loam. No timber. Undergrowth; greasewood, shadscale, rabbit brush, yucca, Joshua. Fair growth of grass.

Survey of the East Boundary of T. 9 S., R. 62 E.

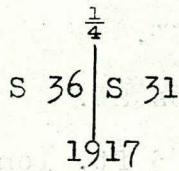
From the cor. of Ts. 9 and 10 S., Rs. 62 and 63 E, heretofore described,

North, on a true line bet. secs. 31 and 36

Over rolling land, W. to SW. slope and drainage.

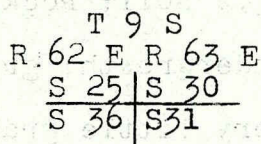
Ascend gradually.

- 3.60 Dry wash, drains S. 80° W.
- 16.80 Dry wash, 2 chs. wide, drains S. 85° W.
- 30.00 Dry wash, drains S. 75° W
- 35.00 Dry wash, drains S. 80° W.
- 40.00 Set an iron post, 3 ft. long, 1 in. in dia., 20 ins. in the ground to solid rock, surrounded by a mound of stone, for  $\frac{1}{4}$  sec. cor., with brass cap marked



and raise a mound of stone, 2 ft. base, 1 $\frac{1}{2}$  ft. high, W. of cor. Cor. stands 90 ft. above Tp. cor.

- 42.60 Dry wash, drains S. 80° W.
- 75.00 Dry wash, drains N. 85° W.
- 80.00 Set an iron post, 3 ft. long, 2 ins. in dia., 12 ins. in the ground to solid rock, surrounded by a mound of stone, for cor. of secs. 25, 30, 31, and 36, with brass cap marked



1917