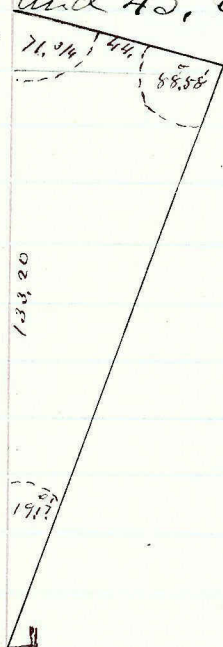


Reed River Guide Meridian

Between Ranges 42 & 43, East Tps. 16 North.

I observed to a flag, placed forward South on line and found the bearing to be South  $19^{\circ}17'W$ , and the resulting distance to be 133 chs, 20 lks, or 79.88 or the 6<sup>th</sup> Mile. This flag being upon the summit of a very high rocky peak, I measured South 62 lks and set a chained stake in a mound of rocks for the Cor. to Secs. 31, 36, 1, 6 Tps. 15, and 16, N. Ranges 42, and 43, East.



$$\begin{aligned} \text{Sin } 88.58 &= 9.999929 \\ \text{Log } 44 &= 1.643453 \\ \hline &11.643382 \\ \text{Sin } 19.17 &= 9.518829 \\ 133.20 &= 2.124553 \end{aligned}$$