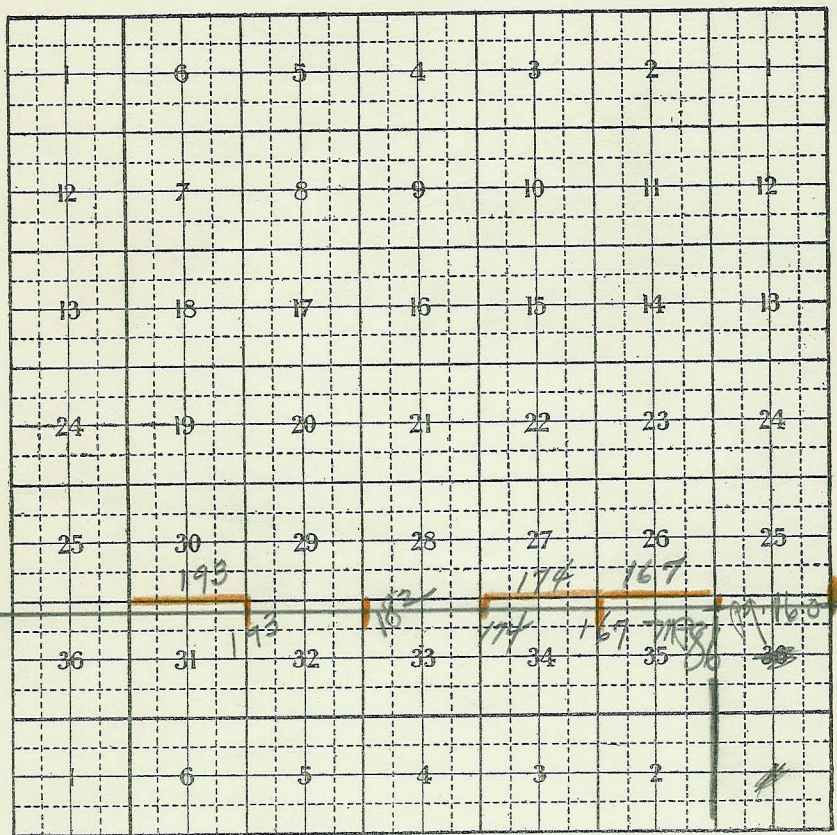


UNITED STATES  
DEPARTMENT OF THE INTERIOR  
BUREAU OF LAND MANAGEMENT

*Idaho field notes* Vol. 296  
1913 survey

LAND OFFICE

Tp. 16 S Range 6 E B.M. Idaho Mer.



cc's along Idaho-New. Bdry.

Retr of Idaho-New Bdy in 1913 - MP  
850 - 91 pages - 46 to 49.