

UNITED STATES  
DEPARTMENT OF THE INTERIOR  
BUREAU OF LAND MANAGEMENT

ORIGINAL

FIELD NOTES

OF THE

DEPENDENT RESURVEY OF

A PORTION OF THE PYRAMID LAKE INDIAN RESERVATION BOUNDARY,  
A PORTION OF THE SOUTH BOUNDARY OF TOWNSHIP 22 NORTH, RANGE 24 EAST,  
A PORTION OF THE SUBDIVISIONAL LINES,  
AND PORTIONS OF THE SUBDIVISION-OF-SECTION LINES OF SECTIONS 23 AND 26,  
TOWNSHIP 21 NORTH, RANGE 24 EAST,  
OF THE MOUNT DIABLO MERIDIAN,  
IN THE STATE OF NEVADA

EXECUTED BY

Michael O. Jones, Cadastral Surveyor

Under Special Instructions dated June 8, 2020,

and approved June 8, 2020,

which provided for the surveys included under Group No. 995,

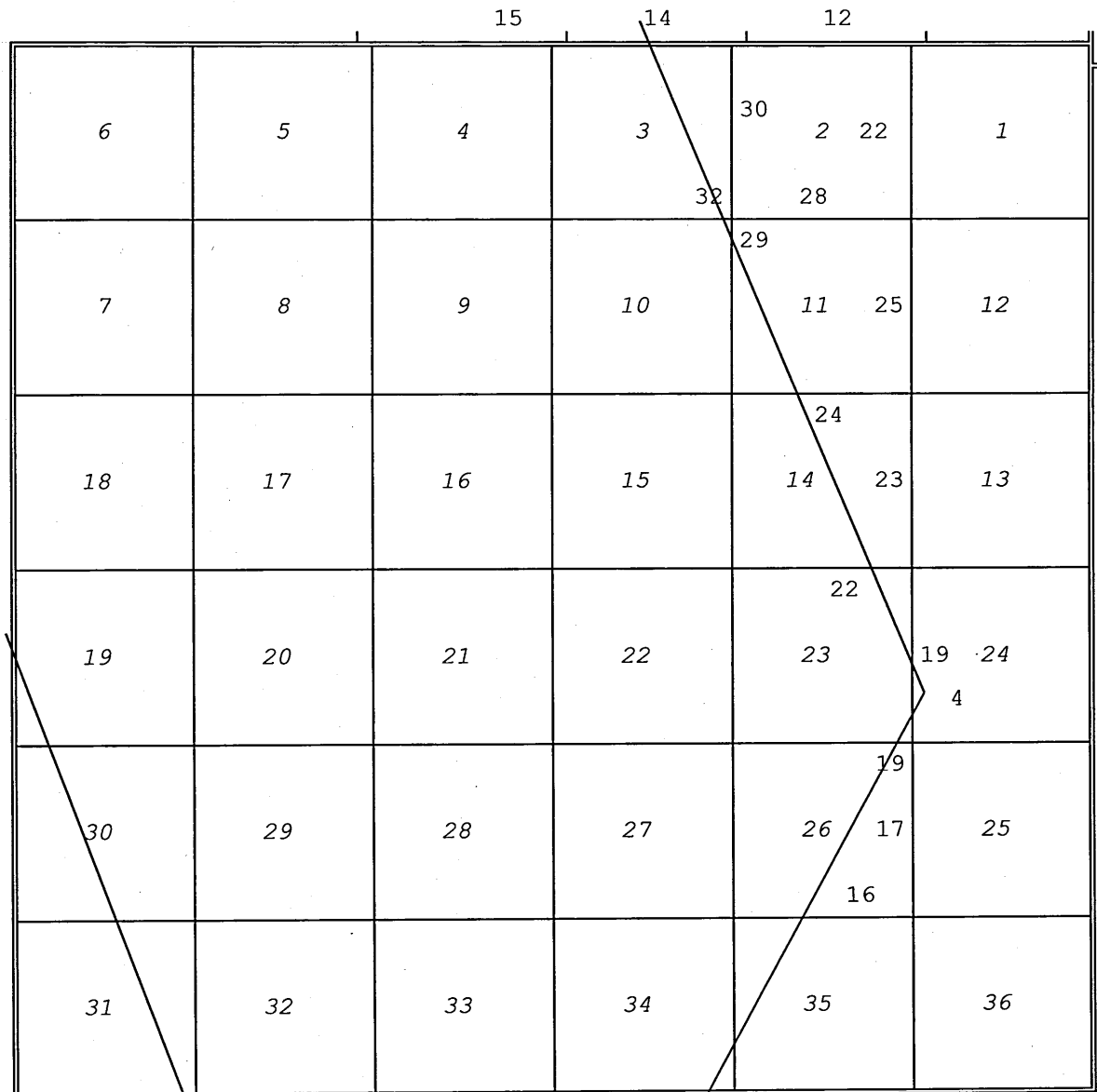
and Assignment Instructions dated June 8, 2020.

Survey commenced June 23, 2020

Survey completed March 30, 2022.

## INDEX DIAGRAM

TOWNSHIP 21 NORTH, RANGE 24 EAST, MOUNT DIABLO MERIDIAN, NEVADA



Dependent Resurvey of a Portion of the Pyramid Lake Indian  
 Reservation Boundary..... pp 2-12  
 Dependent Resurvey of a Portion of the Subdivision-of-Section  
 Lines of Section 23..... pp 33-34  
 Dependent Resurvey of a Portion of the Subdivision-of-Section  
 Lines of Section 26..... pp 34-36

## TOWNSHIP 21 NORTH, RANGE 24 EAST, MOUNT DIABLO MERIDIAN, NEVADA

## CHAINS

The following field notes are those of the dependent resurvey of a portion of the Pyramid Lake Indian Reservation boundary, a portion of the south boundary of Township 22 North, Range 24 East, a portion of the subdivisional lines, and portions of the subdivision-of-section lines of sections 23 and 26, Township 21 North, Range 24 East, Mount Diablo Meridian, Nevada.

The 4th Standard Parallel North, through Range 24 East, the north, east and west boundaries and a portion of the subdivisional lines were surveyed by U.S. Deputy Surveyor S.W. Foreman in 1865, under Contract H.

The Pyramid Lake Indian Reservation boundary was surveyed by E.B. Monroe in 1865.

The Pyramid Lake Indian Reservation boundary, was resurveyed by U.S. Deputy Surveyor P. Powers in 1887, under Contract No. 184.

A portion of the Pyramid Lake Indian Reservation boundary, the north boundary and a portion of the subdivisional lines were dependently resurveyed, and a portion of the subdivisional lines were surveyed by U.S. Deputy Surveyor J.B. Menardi in 1905, under Contract No. 244.

A portion of the Pyramid Lake Indian Reservation boundary, and a portion of the north boundary, were retraced, a portion of the subdivisional lines were dependently resurveyed, and the subdivision of section lines inside the Pyramid Lake Indian Reservation were surveyed by U.S. Surveyor G.P. Harrington in 1911 under instructions dated April 27, 1911, and under direction of Topographer A.F. Dunnington.

Portions of the Pyramid Lake Indian Reservation boundary (adopted record courses and distances) and the north boundary were retraced by U.S. Surveyor A.T. Harris in 1915, under Group No. 13.

Other surveys remote to the area are not included.

Before restoring the corners, the lines of the original surveys were retraced, and a diligent search made for any evidence of the position of the original corners and other calls of the original field note record.

The rules of proportionate measurement were applied in order to ascertain the position of lost corners, after completing the necessary retracements to connect with identified corner locations. In order to simplify the record, the true line notes only are supplied herewith, which refer to the completed survey.

The survey was executed in accordance with the specifications set forth in the Manual of Surveying Instructions, 2009, and the Special Instructions for Group No. 995, dated June 8, 2020.

## TOWNSHIP 21 NORTH, RANGE 24 EAST, MOUNT DIABLO MERIDIAN, NEVADA

## CHAINS

Measurements were made with Trimble R-8 and R-10 Global Navigation Satellite System (GNSS) receivers using the real-time kinematic (RTK) method and refer to the true meridian based on geodetic methods. The mean bearings of the lines and horizontal equivalents of ground distances only are entered in the field notes. Topography features were measured utilizing indirect measurement methods from satellite imagery.

The NAD 1983 (2011) (EPOCH:2010.0000) geographic position, of the following corners were determined from GNSS static observations processed by National Geodetic Survey, Online Positioning User Service (OPUS), utilizing Continuous Operation Reference Stations (CORS) DG6525 COF1 FERNLEY COOP CORS ARP, DN5642 P149 BABBITTPK CN2008 CORS ARP, DE260 STEA STEAD COOP CORS ARP, and DN4179 P143 INDIANCRK\_CN2007 CORS ARP, and carried forward by RTK observations.

The corner of secs. 25, 26, 35 and 36, is as follows:

Latitude: 39°39'04.910" N. Longitude: 119°14'46.720" W.

The witness corner for the corner of secs. 33 and 34, T. 22 N., R. 24 E., on the north boundary of the township, is as follows:

Latitude: 39°43'27.020" N. Longitude: 119°17'00.519" W.

---

DEPENDENT RESURVEY OF A PORTION OF  
THE PYRAMID LAKE INDIAN RESERVATION BOUNDARY,  
T. 21 N., R. 24 E., MOUNT DIABLO MERIDIAN, NEVADA

---

Reestablishment of a Portion of the Survey Executed by  
E.B. Monroe in 1865, a Portion of the Resurvey Executed by U.S.  
Deputy Surveyor P. Powers in 1887, a Portion of the Resurvey  
Executed by U.S. Deputy Surveyor J.B. Menardi in 1905, and a  
Portion of the Retracement Executed by U.S. Surveyor  
G.P. Harrington in 1911

---

Beginning at the true point for Mile Post 6 on the E. bdy. of the Pyramid Lake Indian Reservation, monumented with a brown volcanic stone (1911 Record, granite stone), 24x12x12 ins., firmly set, projecting 9 ins. above the ground, mkd. PL on the E. face. W. of and alongside is the witness cor. to Mile Post 6, monumented with an iron post, 1 in. diam., firmly set, projecting 9 ins. above the ground, with brass cap mkd. as described in the field notes of the 1911 retracement of the boundary line of the Pyramid Lake Indian Reservation, executed under instructions dated April 27, 1911.

Remark brass cap of witness cor. to read:

DEPENDENT RESURVEY OF A PORTION OF  
THE PYRAMID LAKE INDIAN RESERVATION BOUNDARY,  
T. 21 N., R. 24 E., MOUNT DIABLO MERIDIAN, NEVADA

CHAINS	
	<p>WC T21N R24E S35 PLIR 6 M / →</p> <p>2022 1911</p> <p>Cor. is located in dilapidated barbed wire fence, fence extends NE. and SW., and W., 20 lks. dist. of sand road, 15 lks. wide, bears NE. and SW.</p> <p>N. 27°26'20" E., along the E. bdy. of the Pyramid Lake Indian Reservation.</p> <p>Over sand plains.</p>
5.008	The closing cor. of secs. 26 and 35, hereinafter described.
17.629	The closing 1/4 sec. cor. of sec. 26, of the N-S center line of sec. 26, hereinafter described.
39.855	<p>The true point for Mile Post 6 1/2 on the E. bdy. of the Pyramid Lake Indian Reservation, determined E. of and alongside the witness cor. to Mile Post 6 1/2, monumented with a dilapidated iron post, 1 in. diam., firmly set, projecting 12 ins. above the ground, with brass cap mkd. as described in the field notes of the 1911 retracement of the boundary line of the Pyramid Lake Indian Reservation, executed under instructions dated April 27, 1911.</p> <p>At the corner point</p> <p>Set a stainless steel post, 28 ins. long, 2 1/2 ins. diam., 24 ins. in the ground, over a plastic-encased magnet, with brass cap mkd.</p> <p>T21N R24E S26 PLIR 6 1/2 M /</p> <p>2020</p> <p>The witness cor. to Mile Post 6 1/2 no longer functions as a witness cor., and the iron post is inverted and inserted inside the stainless steel post as a memorial to the true point.</p> <p>Cor. is located in dilapidated barbed wire fence, under H brace, fence extends NE. and SW.; and W., 20 lks. dist. of sand road, 15 lks. wide, bears NE. and SW.</p>

DEPENDENT RESURVEY OF A PORTION OF  
THE PYRAMID LAKE INDIAN RESERVATION BOUNDARY,  
T. 21 N., R. 24 E., MOUNT DIABLO MERIDIAN, NEVADA

CHAINS	N. 27°26'00" E., along the E. bdy. of the Pyramid Lake Indian Reservation.
10.264	The closing 1/4 sec. cor. of sec. 26, on the E-W center line of sec. 26, hereinafter described.
39.852	<p>The true point for Mile Post 7 on the E. bdy. of the Pyramid Lake Indian Reservation, monumented with a brown volcanic stone, 16x12x8 ins., firmly set, projecting 6 ins. above the ground, (1911 Record, granite stone, 20x12x8 ins.) mkd. PL on the E. face and 7 on the SE. face. W. of and alongside is the witness cor. to Mile Post 7, monumented with an iron post, 1 in. diam., firmly set, projecting 13 ins. above the ground, with brass cap mkd. as described in the field notes of the 1911 retracement of the boundary line of the Pyramid Lake Indian Reservation, executed under instructions dated April 27, 1911.</p> <p>Remark brass cap of witness cor. to read:</p> <div style="text-align: center;">           WC            T21N R24E            S26            PLIR            7 M / →              2022            1911         </div> <p>Cor. is located in dilapidated barbed wire fence, under H brace, fence extends NE. and SW.; and W., 20 lks. dist. of sand road, 15 lks. wide, bears NE. and SW.</p>
	N. 27°29'30" E., along the E. bdy. of the Pyramid Lake Indian Reservation.
	Over sand plains.
15.435	The closing cor. of secs. 23 and 26, hereinafter described.
24.284	The southerly closing cor. of secs. 23 and 24, hereinafter described.
32.415	<p>The true point for Station No. 3 on the E. bdy. of the Pyramid Lake Indian Reservation, monumented with a brown volcanic stone, 24x18x16 ins., firmly set, projecting 16 ins. above the ground, mkd. X on top, and S3 PLIR on the W. face. W. of and alongside is the witness cor. to Station No. 3, monumented with an iron post, 3 ins. diam., firmly set, projecting 16 ins. above the ground, in a mound of stone, 4 ft. diam., 1 ft. high, with brass cap mkd. as described in the field notes of the 1911 retracement of the boundary line of the Pyramid Lake Indian Reservation, executed under instructions dated April 27, 1911.</p> <p>Remark brass cap of witness cor. to read:</p>

DEPENDENT RESURVEY OF A PORTION OF  
THE PYRAMID LAKE INDIAN RESERVATION BOUNDARY,  
T. 21 N., R. 24 E., MOUNT DIABLO MERIDIAN, NEVADA

CHAINS	
	<p style="text-align: center;">WC T21N R24E S24 PLIR STA 3 } →</p> <p style="text-align: center;">2022 1911</p> <p>Cor. is located on the E. side a dilapidated fence corner, dilapidated barbed wire fence extends SW. and NW.; and W., 20 lks. dist. of sand road, 15 lks. wide, bears SW. and NW.</p>
7.406	<p>N. 21°46'50" W., along the E. bdy. of the Pyramid Lake Indian Reservation.</p> <p>The true point for Mile Post 7 1/2 on the E. bdy. of the Pyramid Lake Indian Reservation, determined E. of and alongside the witness cor. to Mile Post 7 1/2, monumented with a dilapidated iron post, 1 in. diam., firmly set, projecting 6 ins. above the ground, with brass cap mkd. as described in the field notes of the 1911 retracement of the boundary line of the Pyramid Lake Indian Reservation, executed under instructions dated April 27, 1911.</p> <p>At the corner point</p> <p>Set a stainless steel post, 28 ins. long, 2 1/2 ins. diam., 24 ins. in the ground, over a plastic-encased magnet, with brass cap mkd.</p>
	<p style="text-align: center;">T21N R24E S24 PLIR 7 1/2 M \</p> <p style="text-align: center;">2020</p> <p>The witness cor. to Mile Post 7 1/2 no longer functions as a witness cor., and the iron post is inverted and inserted inside the stainless steel post as a memorial to the true point.</p> <p>Cor. is located on the W. side of a dilapidated barbed wire fence, fence extends SE. and NW.; and W., 20 lks. dist. of sand road, 15 lks. wide, bears SE. and NW.</p>
	<p>N. 21°44'50" W., along the E. bdy. of the Pyramid Lake Indian Reservation.</p> <p>Over sand plains.</p>
2.848	<p>The northerly closing cor. of secs. 23 and 24, hereinafter described.</p>
19.421	<p>The closing 1/4 sec. cor. of sec. 23, on the E-W center line of sec. 23, hereinafter described.</p>

DEPENDENT RESURVEY OF A PORTION OF  
THE PYRAMID LAKE INDIAN RESERVATION BOUNDARY,  
T. 21 N., R. 24 E., MOUNT DIABLO MERIDIAN, NEVADA

CHAINS	
30.00	Ascend S. slope of mountain ridge.
39.673	<p>The true point for Mile Post 8 on the E. bdy. of the Pyramid Lake Indian Reservation, monumented with a brown volcanic stone, 15x12x10 ins., set on top of the ground, mkd. PL on E. face and 8M on the S. face (1911 Record, granite stone, 18x16x10 ins.) W. of and alongside is the witness cor. to Mile Post 8, monumented with an iron post, 1 in. diam., firmly set, projecting 16 ins. above the ground, in a collar of stone, with brass cap mkd. as described in the field notes of the 1911 retracement of the boundary line of the Pyramid Lake Indian Reservation, executed under instructions dated April 27, 1911, with a mound of stone, 4 ft. diam., 3 ft. high, NW. of cor.</p> <p>Remark brass cap of witness cor. to read:</p> <div style="text-align: center;">           WC            T21N R24E            S23            PLIR            8 M \ →         </div> <div style="text-align: center;">           2022            1911         </div> <p>Cor. is located on steep rocky SE. slope.</p> <hr/> <p>N. 21°47'00" W., along the E. bdy. of the Pyramid Lake Indian Reservation.</p>
4.45	Mound of stone, 4 ft. diam., 3 ft. high; on top of ridge, bears NE. and SW.; descend.
22.588	The closing cor. of secs. 14 and 23, hereinafter described.
28.00	Dozed fire line; leave mountain and enter sand plains.
39.840	<p>The true point for Mile Post 8 1/2 on the E. bdy. of the Pyramid Lake Indian Reservation, monumented with a brown volcanic stone, (1911 Record, granite stone) 24x20x12 ins., firmly set, projecting 9 ins. above the ground, mkd. PL on E. face and 8 1/2 M on the SE. face. W. of and alongside is the witness cor. to Mile Post 8 1/2, monumented with an iron post, 1 in. diam., firmly set, projecting 5 ins. above the ground, with brass cap mkd. as described in the field notes of the 1911 retracement of the boundary line of the Pyramid Lake Indian Reservation, executed under instructions dated April 27, 1911.</p> <p>Remark brass cap of witness cor. to read:</p>



DEPENDENT RESURVEY OF A PORTION OF  
THE PYRAMID LAKE INDIAN RESERVATION BOUNDARY,  
T. 21 N., R. 24 E., MOUNT DIABLO MERIDIAN, NEVADA

CHAINS	<p>WC T21N R24E S14 PLIR 8 1/2 M \ →  2022 1911</p> <p>Cor. is located in dilapidated barbed wire fence, fence extends SE. and NW.</p> <hr/> <p>N. 21°47'50" W., along the E. bdy. of the Pyramid Lake Indian Reservation.</p> <p>8.50 Wash, drains SW.</p> <p>23.60 Windmill Canyon Road, sand, 15 lks. wide, bears NE. and SW.</p> <p>25.604 The closing 1/4 sec. cor. of sec. 14, on the E-W center line of sec. 14, W. of the Pyramid Lake Indian Reservation boundary only, monumented with an iron post, 1 in. diam., firmly set, projecting 2 ins. above the ground, in a collar of stone, with brass cap mkd. as described in the field notes of the 1911 subdivision of section 14, executed under instructions dated April 27, 1911.</p> <p>Remark the brass cap to read:</p> <p>S 14 C PLIR C — C C</p> <p>2022 1911</p> <p>Cor. is located in dilapidated barbed wire fence, fence extends SE. and NW.</p> <p>29.50 Wash, drains SW.</p> <p>36.00 Ascend SE. slope of small, detached butte.</p> <p>39.886 The true point for Mile Post 9 on the E. bdy. of the Pyramid Lake Indian Reservation, monumented with a granite stone, 20x18 ins., firmly set, projecting 13 ins. above the ground, mkd. PL on NE. face and 9 M on the SE. face. W. of and alongside is the witness cor. to Mile Post 9, monumented with an iron post, 1 in. diam., firmly set, projecting 23 ins. above the ground, in a collar of stone, with brass cap mkd. as described in the field notes of the 1911 retracement of the boundary line of the Pyramid Lake Indian Reservation, executed under instructions dated April 27, 1911, with a mound of stone, 3 1/2 ft. diam., 1 1/2 ft. high, NW. of cor.</p> <p>Remark brass cap of witness cor. to read:</p>
--------	---------------------------------------------------------------------------------------------------------------------------------------------------------------------------------------------------------------------------------------------------------------------------------------------------------------------------------------------------------------------------------------------------------------------------------------------------------------------------------------------------------------------------------------------------------------------------------------------------------------------------------------------------------------------------------------------------------------------------------------------------------------------------------------------------------------------------------------------------------------------------------------------------------------------------------------------------------------------------------------------------------------------------------------------------------------------------------------------------------------------------------------------------------------------------------------------------------------------------------------------------------------------------------------------------------------------------------------------------------------------------------------------------------------------------------------------------------------------------------------------------------------------------------------------------------------------------------------------------------------------------------------------------------------------------------------------------------------------------------------------------------------------------------------------------

DEPENDENT RESURVEY OF A PORTION OF  
THE PYRAMID LAKE INDIAN RESERVATION BOUNDARY,  
T. 21 N., R. 24 E., MOUNT DIABLO MERIDIAN, NEVADA

CHAINS	<p style="text-align: center;">WC T21N R24E S14 PLIR \ → 9 M</p> <p style="text-align: center;">2022 1911</p> <p>Cor. is located on steep rocky SE. facing slope; in dilapidated barbed wire fence, fence extends SE. and NW.</p> <hr/> <p>N. 21°42'00" W., along the E. bdy. of the Pyramid Lake Indian Reservation.</p> <p>9.00 Top of butte; descend.</p> <p>15.00 Foot of steep slope.</p> <p>28.792 The closing cor. of secs. 11 and 14, hereinafter described.</p> <p>29.00 Cross rocky gully, drains W.</p> <p>32.00 Ascend.</p> <p>39.767 The true point for Mile Post 9 1/2 on the E. bdy. of the Pyramid Lake Indian Reservation, monumented with a black volcanic stone, 24x20x12 ins. (1911 Record, granite stone, 10x10x6 ins.), firmly set, projecting 12 ins. above the ground, mkd. PL on E. face and 9 1/2 M on the SE. face. W. of and alongside is the witness cor. to Mile Post 9 1/2, monumented with an iron post, 1 in. diam., firmly set, projecting 16 ins. above a mound of stone, 3 ft. diam., 1 1/2 ft. high, with brass cap mkd. as described in the field notes of the 1911 retracement of the boundary line of the Pyramid Lake Indian Reservation, executed under instructions dated April 27, 1911.</p> <p>Remark brass cap of witness cor. to read:</p> <p style="text-align: center;">WC T21N R24E S11 PLIR \ → 9 1/2 M</p> <p style="text-align: center;">2022 1911</p> <p>Cor. is located on rocky SW. slope; in dilapidated barbed wire fence, fence extends SE. and NW.; with a wire crib filled with rocks alongside to the W., with barbed wire fence extending SW.</p> <hr/> <p>N. 21°46'20" W., along the E. bdy. of the Pyramid Lake Indian Reservation.</p>
--------	--------------------------------------------------------------------------------------------------------------------------------------------------------------------------------------------------------------------------------------------------------------------------------------------------------------------------------------------------------------------------------------------------------------------------------------------------------------------------------------------------------------------------------------------------------------------------------------------------------------------------------------------------------------------------------------------------------------------------------------------------------------------------------------------------------------------------------------------------------------------------------------------------------------------------------------------------------------------------------------------------------------------------------------------------------------------------------------------------------------------------------------------------------------------------------------------------------------------------------------------------------------------------------------------------------------------------------------------------------------------------------------------------------------------------------------------------------------------------------------------------------------------------------------------------------------------------------------------------------------------------------------------------------------------------------------------------------------------------------------------------

DEPENDENT RESURVEY OF A PORTION OF  
THE PYRAMID LAKE INDIAN RESERVATION BOUNDARY,  
T. 21 N., R. 24 E., MOUNT DIABLO MERIDIAN, NEVADA

CHAINS	
10.50	Ravine, drains SW.
28.00	Top of spur; descend.
39.609	<p>The true point for Mile Post 10 on the E. bdy. of the Pyramid Lake Indian Reservation, determined E. of and alongside the witness cor. to Mile Post 10, monumented with a dilapidated iron post, 1 in. diam., firmly set, projecting 16 ins. above a mound of stone, 2 1/2 ft. diam., 1 ft. high, with brass cap mkd. as described in the field notes of the 1911 retracement of the boundary line of the Pyramid Lake Indian Reservation, executed under instructions dated April 27, 1911, with a mound of stone, 3 ft. diam., 3 ft. high, NW. of cor.</p> <p>At the corner point</p> <p>Set a stainless steel post, 28 ins. long, 2 1/2 ins. diam., 16 ins. in the ground, to solid rock, over a plastic-encased magnet, in a mound of stone, 3 ft. base, to top, with brass cap mkd.</p> <div style="text-align: center;"> <p>T21N R24E</p> <p>PLIR \</p> <p>10 M    \</p> <p>          S11</p> <p>2020</p> </div> <p>The witness cor. to Mile Post 10 no longer functions as a witness cor., and the iron post is buried horizontally alongside the stainless steel post as a memorial to the true point.</p> <p>Cor. is located on rocky W. facing slope.</p> <hr/> <p>N. 21°40'40" W., along the E. bdy. of the Pyramid Lake Indian Reservation.</p>
6.50	Rocky gully, drains NW.
20.662	The closing cor. of secs. 10 and 11, hereinafter described.
26.00	Foot of mountain slope.
34.888	The point for the closing cor. of secs. 3 and 10, hereinafter described.
39.840	<p>The true point for Mile Post 10 1/2 on the E. bdy. of the Pyramid Lake Indian Reservation, monumented with a brown volcanic stone, 20x12x10 ins. (1911 Record, granite stone, 18x16x10 ins.), firmly set, projecting 8 ins. above the ground, mkd. PL on E. face and 10 1/2 M on S. face. W. of and alongside is the witness cor. to Mile Post 10 1/2, monumented with an iron post, 1 in. diam., firmly set, projecting 6 ins. above the ground, with brass cap mkd. as described in the field notes of the 1911 retracement of the boundary line of the Pyramid Lake Indian Reservation, executed under instructions dated April 27, 1911.</p>

DEPENDENT RESURVEY OF A PORTION OF  
THE PYRAMID LAKE INDIAN RESERVATION BOUNDARY,  
T. 21 N., R. 24 E., MOUNT DIABLO MERIDIAN, NEVADA

CHAINS	<p>Remark brass cap of witness cor. to read:</p> <p style="text-align: center;">WC T21N R24E S 3 PLIR \ → 10 1/2 M</p> <p style="text-align: center;">2022 1911</p> <p>Cor. is located on sandy W. facing slope; in dilapidated barbed wire fence, fence extends SE. and NW.</p>
39.866	<p>N. 21°51'20" W., along the E. bdy. of the Pyramid Lake Indian Reservation.</p> <p>The true point for Mile Post 11 on the E. bdy. of the Pyramid Lake Indian Reservation, monumented with a red volcanic stone, 21x16x12 ins. (1911 Record, granite stone, 26x24x20 ins.), firmly set, projecting 10 ins. above the ground, mkd. PL on NE. face and 11 M on SE. face. W. of and alongside is the witness cor. to Mile Post 11, monumented with an iron post, 1 in. diam., firmly set, projecting 10 ins. above the ground, with brass cap mkd. as described in the field notes of the 1911 retracement of the boundary line of the Pyramid Lake Indian Reservation, executed under instructions dated April 27, 1911.</p> <p>Remark brass cap of witness cor. to read:</p> <p style="text-align: center;">WC T21N R24E S 3 PLIR \ → 11 M</p> <p style="text-align: center;">2022 1911</p> <p>Cor. is located on sandy W. facing slope; in dilapidated barbed wire fence, fence extends SE. and NW.</p>
18.00	<p>N. 21°40'10" W., along the E. bdy. of the Pyramid Lake Indian Reservation.</p> <p>Bottom of broad deep ravine, drains SW.</p>
23.00	<p>Begin ascend.</p>

DEPENDENT RESURVEY OF A PORTION OF  
THE PYRAMID LAKE INDIAN RESERVATION BOUNDARY,  
T. 21 N., R. 24 E., MOUNT DIABLO MERIDIAN, NEVADA

<p>CHAINS 39.769</p>	<p>The true point for Mile Post 11 1/2 on the E. bdy. of the Pyramid Lake Indian Reservation, monumented with a brown volcanic stone, 24x20x10 ins. (1911 Record, granite stone, 36x30x12 ins.), firmly set, projecting 18 ins. above the ground, mkd. 11 1/2 M on N. face and PLIR on W. face. W. of and alongside is the witness cor. to Mile Post 11 1/2, monumented with an iron post, 1 in. diam., firmly set, projecting 18 ins. above a mound of stone, 2 1/2 ft. diam., 1 ft. high, with brass cap mkd. as described in the field notes of the 1911 retracement of the boundary line of the Pyramid Lake Indian Reservation, executed under instructions dated April 27, 1911.</p> <p>Remark brass cap of witness cor. to read:</p> <div style="text-align: center;"> <p>WC T21N R24E S 3 PLIR 11 1/2 M \ →</p> <p>2022 1911</p> </div> <p>Cor. is located on top of ridge; in dilapidated barbed wire fence, fence extends SE. and NW.</p> <hr/> <p>N. 21°41'40" W., along the E. bdy. of the Pyramid Lake Indian Reservation.</p> <p>Descend.</p> <p>5.217 The closing cor. of secs. 3 and 34, Tps. 21 and 22 N., R. 24 E., hereinafter described.</p> <p>6.50 Gully, drains SW.</p> <p>8.00 Gully, drains SW.; ascend.</p> <p>12.30 Top of spur, slopes SW.; descend.</p> <p>23.00 Spur, W. face.</p> <p>28.00 Ravine, drains WNW.; ascend.</p> <p>32.00 Spur, W. face.</p> <p>36.00 Approximate location of underground gas line, bears NE. and SW.</p> <p>36.50 Road, dirt, 20 lks. wide, bears NE. and SW.</p>
--------------------------	--------------------------------------------------------------------------------------------------------------------------------------------------------------------------------------------------------------------------------------------------------------------------------------------------------------------------------------------------------------------------------------------------------------------------------------------------------------------------------------------------------------------------------------------------------------------------------------------------------------------------------------------------------------------------------------------------------------------------------------------------------------------------------------------------------------------------------------------------------------------------------------------------------------------------------------------------------------------------------------------------------------------------------------------------------------------------------------------------------------------------------------------------------------------------------------------------------------------------------------------------------------------------------------------------------------------------------------------------------------------------------------------------------------------------------------------------------------------------------------------------------------------------------------------------

DEPENDENT RESURVEY OF A PORTION OF  
THE PYRAMID LAKE INDIAN RESERVATION BOUNDARY,  
T. 21 N., R. 24 E., MOUNT DIABLO MERIDIAN, NEVADA

CHAINS  
40.261

The true point for Mile Post 12 on the E. bdy. of the Pyramid Lake Indian Reservation, monumented with a brown volcanic stone, 12x12 ins. (1911 Record, 24x18x12 ins.), firmly set, projecting 16 ins. above the ground, mkd. 12 M on S. face and PL on E. face. W. of and alongside is the witness cor. to Mile Post 12, monumented with an iron post, 1 in. diam., firmly set, projecting 20 ins. above the ground, with brass cap mkd. as described in the field notes of the 1911 retracement of the E. bdy. of the Pyramid Lake Indian Reservation in T. 22 N., R. 24 E., executed under instructions dated April 27, 1911.

Remark brass cap of witness cor. to read:

WC  
T22N R24E  
S34  
PLIR \ →  
12 M  
  
2022  
1911

---

DEPENDENT RESURVEY OF A PORTION OF THE SOUTH BOUNDARY,  
T. 22 N., R. 24 E., MOUNT DIABLO MERIDIAN, NEVADA

---

Reestablishment of a Portion of the Survey Executed by  
U.S. Deputy Surveyor S.W. Foreman in 1865,  
a Portion of the Resurvey Executed by  
U.S. Deputy Surveyor J.B. Menardi in 1905,  
a Portion of the Retracement Executed by  
G.P. Harrington in 1911, and  
a Portion of the Retracement Executed by  
U.S. Surveyor A.T. Harris in 1915

---

From the cor. of secs. 35 and 36 only, T. 22 N., R. 24 E., monumented with a basalt stone, 16x8x6 ins. (1915 Record, lava stone, 10x10x12 ins.), firmly set, projecting 9 ins. above the ground, mkd. with 1 notch on E. edge and 5 notches on W. edge, with a mound of stone, 3 ft. diam., 1/2 ft. high, N. of cor.

At the corner point

Set a stainless steel post, 28 ins. long, 2 1/2 ins. diam., 25 ins. in the ground, over a plastic-encased magnet, with brass cap mkd.

T22N R24E  
S35 | S36  
—  
T21N R24E  
S 1  
  
2020

DEPENDENT RESURVEY OF A PORTION OF THE SOUTH BOUNDARY,  
T. 22 N., R. 24 E., MOUNT DIABLO MERIDIAN, NEVADA

CHAINS	<p>Bury the mkd. stone inverted alongside the stainless steel post and rebuild the mound of stone, 3 ft. base, 1 1/2 ft. high.</p> <p>Cor. is located on W. facing slope.</p> <p>S. 89°54'00" W., on the S. bdy. of sec. 35.</p> <p>Descend.</p>
3.401	The closing cor. of secs. 1 and 2, T. 21 N., R. 24 E., hereinafter described.
8.50	Wash, drains NW.
19.50	Bottom of valley.
20.00	Begin ascend.
33.50	Ridge, bears NE. and S.; descend.
40.080	<p>The 1/4 sec. cor. of sec. 35 only, T. 22 N., R. 24 E., monumented with an iron post, 1 in. diam., firmly set, projecting 14 ins. above the ground, in a collar of stone, with brass cap mkd. as described in the field notes of the 1915 retracement of the S. bdy. of T. 22 N., R. 24 E., executed under Group No. 13, with a mound of stone, 3 1/2 ft. diam., 1 1/2 ft. high, N. of cor. Add the marks T22N R24E T21N R24E 2021 to the brass cap.</p> <p>Cor. is located on W. facing slope.</p> <hr/> <p>N. 89°57'20" W., beginning new measurement.</p>
3.290	The 1/4 sec. cor. of sec. 2 only, T. 21 N., R. 24 E., hereinafter described.
6.50	Bottom of valley, begin ascend.
28.50	Ridge, bears NE. and SW.
31.50	Begin steep descend.
40.370	<p>The cor. of secs. 34 and 35 only, T. 22 N., R. 24 E., monumented with a basalt stone, 18x10x8 ins. (1915 Record, lava stone, 10x10x14 ins.), firmly set, projecting 16 ins. above the ground, mkd. with 2 notches on E. edge and 4 notches on W. edge, with a mound of stone, 2 ft. diam., 1 ft. high, N. of cor.</p> <p>At the corner point</p> <p>Set a stainless steel post, 28 ins. long, 2 1/2 ins. diam., 21 ins. in the ground, to solid rock, over a plastic-encased magnet, in a collar of earth and stone, with brass cap mkd.</p>

DEPENDENT RESURVEY OF A PORTION OF THE SOUTH BOUNDARY,  
T. 22 N., R. 24 E., MOUNT DIABLO MERIDIAN, NEVADA

CHAINS	
	<div style="text-align: center;"> T22N R24E  S34   S35  <hr style="width: 50px; margin: 0 auto;"/> T21N R24E  S 2    2020 </div>
	<p>Bury the mkd. stone inverted alongside the stainless steel post and rebuild the mound of stone, 3 ft. base, 1 1/2 ft. high.</p> <p>Cor. is located on steep rocky W. facing slope.</p>
	<hr/> <p>N. 89°37'30" W., on the S. bdy. of sec. 34.</p>
2.890	The closing cor. of secs. 2 and 3, T. 21 N., R. 24 E., hereinafter described.
19.00	Bottom of broad deep ravine, drains SW.
20.50	Begin steep ascend.
34.50	Ridge, bears NE. and SW.; begin steep descend into rocky ravine.
40.192	<p>The 1/4 sec. cor. of sec. 34 only, T. 22 N., R. 24 E., monumented with an iron post, 1 in. diam., firmly set, projecting 12 ins. above a mound of stone, 3 ft. diam., 1 1/2 ft. high, with brass cap mkd. as described in the field notes of the 1915 retracement of the S. bdy. of T. 22 N., R. 24 E., executed under Group No. 13, with a mound of stone, 2 1/2 ft. diam., 1 ft. high, N. of cor. This cor. also functions as the 1/4 sec. cor. of sec. 3, W. of the Pyramid Lake Indian Reservation boundary. Add the marks T22N R24E T21N R24E 2022 to the brass cap.</p> <p>Cor. is located on rocky NW. facing slope; on S. side of rocky ravine.</p>
	<hr/> <p>S. 86°53'10" W, beginning new measurement.</p>
0.993	<p>The closing cor. of secs. 3 and 34, Tps. 21 and 22 N., R. 24 E., on the E. bdy. of the Pyramid Lake Indian Reservation, monumented with an iron post, 3 ins. diam., firmly set, projecting 12 ins. above a mound of stone, 5 ft. diam., 1 1/2 ft. high, with brass cap mkd. as described in the field notes of the 1915 retracement of the S. bdy. of T. 22 N., R. 24 E., executed under Group No. 13.</p> <p>Remark the brass cap to read:</p>



DEPENDENT RESURVEY OF A PORTION OF THE SOUTH BOUNDARY,  
T. 22 N., R. 24 E., MOUNT DIABLO MERIDIAN, NEVADA

CHAINS	
	<div style="text-align: center;"> <p>T22N R24E S34 C PLIR ——— C S 3 T21N R24E</p> <p>2022 1911</p> </div> <p>Cor. is located on rocky NW. facing slope; on S. side of rocky ravine.</p> <p>From this cor., the true point for Mile Post 11 1/2 on the E. bdy. of the Pyramid Lake Indian Reservation, hereinbefore described, bears S. 21°41'40 E., 5.217 chs. dist.</p> <hr/> <p>S. 89°27'30 W., beginning new measurement.</p>
1.458	An unrecorded General Land Office iron post, 1 in. diam., firmly set, projecting 24 ins. above the top of a mound of stone, 3 ft. diam., 1 1/2 ft. high, with brass cap mkd. CC 1/4 S3 1911. This monumented position is not of official record and is not utilized during the course of this survey.
4.00	Ravine, drains SW.
9.50	Same ravine, drains NW.
12.50	Spur, N. face.
22.50	Approximate location of underground gas line, bears NE. and SW.
23.20	Road, dirt, 20 lks. wide, bears NE. and SW., in bottom of deep wide ravine.
38.955	True point for the cor. of secs. 33 and 34 only, T. 22 N., R. 24 E., on the N. bdy. of the Tp., determined by irregular boundary adjustment; point falls in rock slide where it is impracticable to establish a permanent monument.
	<hr/> <p>N. 88°09'00" W., on the S. bdy. of sec. 33.</p>
0.431	The witness cor. to the cor. of secs. 33 and 34 only, T. 22 N., R. 24 E., monumented with a stationary basalt stone, exposed 3x3x2 ft. (1911 Record, volcanic rock, 12x12x8 ins.), mkd. with WC and X on top, 3 notches on E. edge and 3 notches on W. edge, with an iron post W. of and alongside, 1 in. diam., firmly set, projecting 10 ins. above a mound of stone, 2 ft. diam., 1 ft. high, with brass cap mkd. as described in the field notes of the 1911 retracement of the N. bdy. of T. 21 N., R. 24 E., executed under instructions dated April 27, 1911. Add the marks T21N R24E S 3 2022 to the brass cap.

DEPENDENT RESURVEY OF A PORTION OF THE SOUTH BOUNDARY,  
T. 22 N., R. 24 E., MOUNT DIABLO MERIDIAN, NEVADA

## CHAINS

From this cor., a mound of stone, 3 ft. diam., 2 ft. high, bears  
N. 7° W., 10 lks. dist.

Witness cor. is located on rocky SE. facing slope.

DEPENDENT RESURVEY OF A PORTION OF THE SUBDIVISIONAL LINES,  
T. 21 N., R. 24 E., MOUNT DIABLO MERIDIAN, NEVADA

Reestablishment of a Portion of the Survey Executed by  
U.S. Deputy Surveyor J.B. Menardi in 1905  
and a Portion of the Resurvey Executed by U.S. Surveyor  
G.P. Harrington in 1911

From the cor. of secs. 25, 26, 35 and 36, monumented with a  
granite stone, 17x10x10 ins. (1905 Record, basalt stone,  
14x10x10 ins.), firmly set, projecting 11 ins. above the ground,  
mkd. with 1 notch on the E. edge and 1 notch on the S. edge.

At the corner point

Set a stainless steel post, 28 ins. long, 2 1/2 ins. diam.,  
24 ins. in the ground, over a plastic-encased magnet, with brass  
cap mkd.

T21N R24E  
S26 | S25  
—+—  
S35 | S36

2020

Bury the mkd. stone inverted alongside the stainless steel post.  
S. 89°55'00" W., bet. secs. 26 and 35.

6.00

Sand hill.

40.016

The 1/4 sec. cor. of secs. 26 and 35, monumented with a basalt  
stone (1911 Record, granite stone), 14x8x8 ins., firmly set,  
projecting 8 ins. above the ground, mkd. 1/4 on the N. face.

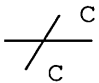
At the corner point

Set a stainless steel post, 28 ins. long, 2 1/2 ins. diam.,  
22 ins. in the ground, over a plastic-encased magnet, with brass  
cap mkd.

T21N R24E  
S26  
1/4 —+—  
S35

2020

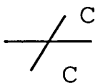
DEPENDENT RESURVEY OF A PORTION OF THE SUBDIVISIONAL LINES,  
T. 21 N., R. 24 E., MOUNT DIABLO MERIDIAN, NEVADA

CHAINS	<p>Bury the mkd. stone inverted alongside the stainless steel post.</p> <hr/> <p>S. 89°51'00" W., beginning new measurement.</p>
5.830	<p>The closing cor. of secs. 26 and 35, on the E. bdy. of the Pyramid Lake Indian Reservation, monumented with an iron post, 1 in. diam., firmly set, projecting 2 ins. above the ground, with brass cap mkd. as described in the field notes of the 1911 dependent resurvey of the subdivision of T. 21 N., R. 24 E., executed under instructions dated April 27, 1911.</p> <p>Remark the brass cap to read:</p> <div style="text-align: center;"> <p>T21N R24E</p> <p>S26</p> <p>PLIR </p> <p>S35</p> <p>2022</p> <p>1911</p> </div> <p>Cor. is located in dilapidated barbed wire fence, under H brace, fence extends NE. and SW.; and W., 20 lks. dist. of sand road, 15 lks. wide, bears NE. and SW.</p> <p>From this cor., the true point for Mile Post 6, on the E. bdy. of the Pyramid Lake Indian Reservation, hereinbefore described, bears S. 27°26'20" W., 5.008 chs. dist.</p> <p>From this same cor., the true point for the closing cor. of secs. 26 and 35, on the E. bdy. of sec. 34, bears S. 89°51'00" W., 31.536 chs. dist., monumented with a basalt stone, 9x6 ins. (1911 Record, granite stone, 14x10x8 ins.), firmly set, projecting 8 ins. above the ground, mkd. CC on top, 2 grooves on the E. face and 1 groove on the S. face. W. of and alongside is the witness cor. to the closing cor. of secs. 26 and 35, monumented with an iron post, 1 in. diam., firmly set, projecting 11 ins. above the ground, with brass cap mkd. as described in the field notes of the 1911 dependent resurvey of the subdivision of T. 21 N., R. 24 E., executed under instructions dated April 27, 1911.</p> <hr/> <p>From the cor. of secs. 25, 26, 35 and 36.</p> <p>N. 0°09'10" W., bet. secs. 25 and 26.</p>
2.00	Sand hill.
7.00	Depression.
13.50	Sand ridge, bears E. and W.
28.00	Sand ridge, bears E. and W.


DEPENDENT RESURVEY OF A PORTION OF THE SUBDIVISIONAL LINES,  
T. 21 N., R. 24 E., MOUNT DIABLO MERIDIAN, NEVADA

CHAINS										
31.50	Enter alkali flat.									
38.00	Leave alkali flat.									
40.010	<p>The 1/4 sec. cor. of secs. 25 and 26, monumented with a basalt stone, 16x10x8 ins., firmly set, projecting 4 ins. above the ground, mkd. with 1/4 on W. face.</p> <p>At the corner point</p> <p>Set a stainless steel post, 28 ins. long, 2 1/2 ins. diam., 24 ins. in the ground, over a plastic-encased magnet, with brass cap mkd.</p> <div style="text-align: center;"><p>T21N R24E</p><p>1/4</p><table><tr><td>S26</td><td> </td><td>S25</td></tr></table><p>2020</p></div> <p>Bury the mkd. stone inverted alongside the stainless steel post.</p> <p>Cor. is located on top of sand ridge.</p> <hr/>	S26		S25						
S26		S25								
	N. 0°07'10" W., beginning new measurement.									
7.50	Sand hill.									
10.00	Sand flat.									
17.00	Sand hill.									
39.940	<p>The cor. of secs. 23, 24, 25 and 26, monumented with a basalt stone (1911 Record, volcanic stone), 12x12x6 ins., firmly set, projecting 10 ins. above the ground, mkd. with 1 notch on the E. edge, with a mound of stone, 4 ft. diam., 1 ft. high, W. of cor.</p> <p>At the corner point</p> <p>Set a stainless steel post, 28 ins. long, 2 1/2 ins. diam., 24 ins. in the ground, over a plastic-encased magnet, with brass cap mkd.</p> <div style="text-align: center;"><p>T21N R24E</p><table><tr><td>S23</td><td> </td><td>S24</td></tr><tr><td colspan="3"><hr/></td></tr><tr><td>S26</td><td> </td><td>S25</td></tr></table><p>2020</p></div> <p>Bury the mkd. stone inverted alongside the stainless steel post.</p> <p>Cor. is located on SE. edge of alkali flat.</p> <hr/>	S23		S24	<hr/>			S26		S25
S23		S24								
<hr/>										
S26		S25								

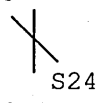
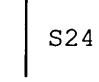
DEPENDENT RESURVEY OF A PORTION OF THE SUBDIVISIONAL LINES,  
T. 21 N., R. 24 E., MOUNT DIABLO MERIDIAN, NEVADA

CHAINS	S. 89°32'30" W., bet. secs. 23 and 26.
2.50	Sand hill.
4.107	<p>The closing cor. of secs. 23 and 26 on the E. bdy. of the Pyramid Lake Indian Reservation, monumented with an iron post, 1 in. diam., firmly set, projecting 5 ins. above the ground, with brass cap mkd. as described in the field notes of the 1911 dependent resurvey of the subdivision of T. 21 N., R. 24 E., executed under instructions dated April 27, 1911.</p> <p>Remark the brass cap to read:</p> <div style="text-align: center;"> <p>T21N R24E</p> <p>S23</p> <p>PLIR — </p> <p>S26</p> </div> <p>2022</p> <p>1911</p> <p>Cor. is located in dilapidated barbed wire fence, fence extends NE. and SW.; and W., 20 lks. dist. of sand road, 15 lks. wide, bears NE. and SW.</p> <p>From this cor., the true point for Mile Post 7, on the E. bdy. of the Pyramid Lake Indian Reservation, hereinbefore described, bears S. 27°29'30" W., 15.435 chs. dist.</p> <p>From this same cor., the true point for the 1/4 sec. cor. of secs. 23 and 26, bears S. 89°54'00" W., 35.833 chs. dist., monumented with a basalt stone, 9x6 ins. firmly set, projecting 6 ins. above the ground (1911 Record, volcanic stone, 10x8x8 ins.), mkd. 1/4 on the N. face. W. of and alongside is the witness cor. to the 1/4 sec. cor. of secs. 23 and 26, monumented with an iron post, 1 in. diam., firmly set, projecting 11 ins. above the ground, with brass cap mkd. as described in the field notes of the 1911 dependent resurvey of the subdivision of T. 21 N., R. 24 E., executed under instructions dated April 27, 1911. Add the marks T21N R24E 2022, and an arrow pointing to the corner, to the brass cap.</p> <p>Cor. is located N., 30 lks. dist. of sand road, 15 lks. wide, bears NE. and SW.</p> <hr/> <p>From the cor. of secs. 23, 24, 25 and 26.</p> <p>N. 0°09'20" W., bet. secs. 23 and 24.</p>

DEPENDENT RESURVEY OF A PORTION OF THE SUBDIVISIONAL LINES,  
T. 21 N., R. 24 E., MOUNT DIABLO MERIDIAN, NEVADA

<p>CHAINS 7.817</p>	<p>The southerly closing cor. of secs. 23 and 24, on the E. bdy. of the Pyramid Lake Indian Reservation, monumented with the remains of a dilapidated iron post, 1 in. diam., firmly set, 18 ins. below the ground, with brass cap lying loose on top of the ground, mkd. as described in the field notes of the 1911 dependent resurvey of the subdivision of T. 21 N., R. 24 E., executed under instructions dated April 27, 1911.</p> <p>At the corner point</p> <p>Set a stainless steel post, 28 ins. long, 2 1/2 ins. diam., 24 ins. in the ground, over a plastic-encased magnet, with brass cap mkd.</p> <div style="text-align: center;"> <p>T21N R24E PLIR S24  S23 C C</p> </div> <p>2020</p> <p>Bury the remains of the iron post alongside the stainless steel post.</p> <p>Cor. is located in dilapidated barbed wire fence, under H brace, fence extends NE. and SW.; and W., 20 lks. dist. of sand road, 15 lks. wide, bears NE. and SW.</p> <p>From this cor., Station No. 3, on the E. bdy. of the Pyramid Lake Indian Reservation, hereinbefore described, bears N. 27°29'30" E., 8.131 chs. dist.</p> <hr/> <p>N. 0°10'20" W., beginning new measurement.</p>
<p>16.735</p>	<p>The northerly closing cor. of secs. 23 and 24, on the E. bdy. of the Pyramid Lake Indian Reservation, monumented with an iron post, 1 in. diam., firmly set, projecting 10 ins. above the ground, with brass cap mkd. as described in the field notes of the 1911 dependent resurvey of the subdivision of T. 21 N., R. 24 E., executed under instructions dated April 27, 1911.</p> <p>Remark the brass cap to read:</p>

DEPENDENT RESURVEY OF A PORTION OF THE SUBDIVISIONAL LINES,  
T. 21 N., R. 24 E., MOUNT DIABLO MERIDIAN, NEVADA

CHAINS	
	<p style="text-align: center;">T21N R24E S23   S24 C C PLIR</p> <p style="text-align: center;">2022 1911</p> <p>Cor. is located in dilapidated barbed wire fence, fence extends SE. and NW.; and W., 20 lks. dist. of sand road, 15 lks. wide, bears SE. and NW.</p> <p>From this cor., Mile Post 7 1/2, on the E. bdy. of the Pyramid Lake Indian Reservation, hereinbefore described, bears S. 21°44'50" E., 2.848 chs. dist.</p> <hr/> <p>N. 0°14'30" E., beginning new measurement.</p>
10.00	Ascend rocky slope
15.402	<p>The 1/4 sec. cor. of secs. 23 and 24, monumented with a basalt stone, 17x10x10 ins. (1905 Record, 14x10x10 ins.), firmly set, projecting 8 ins. above the ground, mkd. with 1/4 on W. face, with a mound of stone, 4 ft. diam., 3 ft. high, W. of cor.</p> <p>At the corner point</p> <p>Set a stainless steel post, 28 ins. long, 2 1/2 ins. diam., 21 ins. in the ground to solid rock, over a plastic-encased magnet, with brass cap mkd.</p> <p style="text-align: center;">T21N R24E 1/4   S23   S24</p> <p style="text-align: center;">2020</p> <p>Bury the mkd. stone inverted alongside the stainless steel post.</p> <p>Cor. is located on rocky SW. facing slope.</p> <hr/> <p>N. 0°19'50" W., beginning new measurement.</p>
12.50	Ravine, drains SW.
29.50	Head of ravine, drains SW.
38.50	Top of high basalt ridge, bears NE. and SW.

DEPENDENT RESURVEY OF A PORTION OF THE SUBDIVISIONAL LINES,  
T. 21 N., R. 24 E., MOUNT DIABLO MERIDIAN, NEVADA

CHAINS 39.808	<p>The cor. of secs. 13, 14, 23 and 24, monumented with a basalt stone, 15x8x8 ins. (1905 Record, 18x8x6 ins.), firmly set, projecting 8 ins. above the ground, mkd. with 1 notch on the E. edge and 3 notches on the S. edge, with a mound of stone, 4 ft. diam., 2 ft. high, W. of cor.</p> <p>At the corner point</p> <p>Set a stainless steel post, 28 ins. long, 2 1/2 ins. diam., 10 ins. in the ground, to solid rock, over a plastic-encased magnet, and in a mound of stone, 3 ft. base, to top, with brass cap mkd.</p> <div style="text-align: center;"><p>T21N R24E</p><table><tr><td>S14</td><td> </td><td>S13</td></tr><tr><td colspan="3"><hr/></td></tr><tr><td>S23</td><td> </td><td>S24</td></tr></table><p>2020</p></div> <p>Bury the mkd. stone inverted alongside the stainless steel post.</p> <p>Cor. is located on steep rocky NE. facing slope; and W., 2 chs. dist. of head of rocky ravine.</p> <hr/>	S14		S13	<hr/>			S23		S24
S14		S13								
<hr/>										
S23		S24								
6.50	<p>S. 89°55'10" W., bet. secs. 14 and 23.</p>									
21.861	<p>Top of rocky ridge, bears SSE. and NNW.</p> <p>Intersect the E. bdy. of the Pyramid Lake Indian Reservation.</p> <p>Point for the closing cor. of secs. 14 and 23 at intersection of the line bet. secs. 14 and 23, with the E. bdy. of the Pyramid Lake Indian Reservation; there is no remaining evidence of the 1911 iron post.</p> <p>At the corner point</p> <p>Set a stainless steel post, 28 ins. long, 2 1/2 ins. diam., 18 ins. in the ground, to solid rock, over a plastic-encased magnet, and in a mound of stone, 5 ft. base to top, with brass cap mkd.</p> <div style="text-align: center;"><p>T21N R24E</p><p>S14</p><table><tr><td rowspan="3">PLIR</td><td></td><td>C</td></tr><tr><td>—</td><td>C</td></tr><tr><td></td><td>S23</td></tr></table><p>2020</p></div> <p>Cor. is located on rocky W. facing slope; and in dilapidated barbed wire fence, fence extends SE. and NW.</p>	PLIR		C	—	C		S23		
PLIR			C							
	—		C							
		S23								



DEPENDENT RESURVEY OF A PORTION OF THE SUBDIVISIONAL LINES,  
T. 21 N., R. 24 E., MOUNT DIABLO MERIDIAN, NEVADA

CHAINS	From this cor., the true point for Mile Post 8 1/2, on the E. bdy. of the Pyramid Lake Indian Reservation, hereinbefore described, bears N. 21°47'00" W., 17.252 chs. dist.
39.990	The true point for the 1/4 sec. cor. of secs. 14 and 23, monumented with a basalt stone, 11x6 ins. (1911 Record, volcanic stone, 14x8x6 ins.), firmly set, projecting 8 ins. above the ground, mkd. 1/4 on N. face. W. of and alongside is the witness cor. to the 1/4 sec. cor. of secs. 14 and 23, monumented with an iron post, 1 in. diam., firmly set, projecting 3 ins. above the ground, with brass cap mkd. as described in the field notes of the 1911 dependent resurvey of the subdivision of T. 21 N., R. 24 E., executed under instructions dated April 27, 1911. Add the marks T21N R24E 2022, and an arrow pointing to the corner, to the brass cap.
	From the cor. of secs. 13, 14, 23 and 24 N. 0°06'10" W., bet. secs. 13 and 14.
1.00	Bottom of ravine, drains NW.
5.50	Top of spur, slopes W.; thence along W. slope of high ridge.
30.00	Top of spur, slopes NW.; thence descend.
39.742	The 1/4 sec. cor. of secs. 13 and 14, monumented with a basalt stone, 16x6x6 ins. (1905 Record, 14x6x6 ins.), firmly set, projecting 6 ins. above the ground, mkd. with 1/4 on W. face, with a mound of stone, 3 ft. diam., 1 1/2 ft. high, W. of cor.  At the corner point  Set a stainless steel post, 28 ins. long, 2 1/2 ins. diam., 10 ins. in the ground, to solid rock, over a plastic-encased magnet, and in a mound of stone, 3 ft. base, to top, with brass cap mkd.  <div style="text-align: center;"> T21N R24E  1/4  S14   S13  2020 </div> Bury the mkd. stone inverted alongside the stainless steel post. Cor. is located on NW. facing slope.
	N. 0°13'10" W., beginning new measurement.
5.00	Gully, drains SW.; thence begin ascend.
25.00	Top of spur, slopes W.; thence descend.
38.00	Windmill Canyon Road, dirt, 15 lks. wide, bears NE. and SW.

DEPENDENT RESURVEY OF A PORTION OF THE SUBDIVISIONAL LINES,  
T. 21 N., R. 24 E., MOUNT DIABLO MERIDIAN, NEVADA

<p>CHAINS 39.618</p>	<p>The witness cor. to the cor. of secs. 11, 12, 13 and 14, monumented with a basalt stone, 18x12x6 ins. (1905 Record, 16x10x6 ins.), lying on top of the ground, mkd. with WC on top, 1 notch on the E. edge and 4 notches on the S. edge, with a mound of stone, 4 ft. diam., 1 1/2 ft. high, W. of cor.</p> <p>At the corner point</p> <p>Set a stainless steel post, 28 ins. long, 2 1/2 ins. diam., 22 ins. in the ground, over a plastic-encased magnet, with brass cap mkd.</p> <div data-bbox="860 580 1039 735" data-label="Diagram"> <pre>       WC       ↑ T21N   R24E S11    S12 ----- S14    S13 </pre> </div> <p>2020</p> <p>Bury the mkd. stone inverted alongside the stainless steel post and rebuild the mound of stone, 4 ft. base, 2 ft. high.</p> <p>Cor. is located on top of the left bank of gully, drains SW.</p> <hr/> <p>N. 0°13'10" W., beginning new measurement.</p> <p>0.300 True point for the cor. of secs. 11, 12, 13 and 14, at record distance; point falls at the bottom of gully, drains SW., where it is impractical to establish a permanent monument.</p> <hr/> <p>N. 89°45'10" W., bet. secs. 11 and 14.</p> <p>35.00 Ridge, bears NE. and SW.</p> <p>39.794 The 1/4 sec. cor. of secs. 11 and 14, monumented with a basalt stone, 16x9x7 ins. (1911 Record, volcanic stone 8x6x6 ins.), firmly set, projecting 7 ins. above the ground, mkd. 1/4 on the N. face, with a mound of stone, 3 ft. diam., 1 1/2 ft. high, N. of cor.</p> <p>At the corner point</p> <p>Set a stainless steel post, 28 ins. long, 2 1/2 ins. diam., 21 ins. in the ground, over a plastic-encased magnet, with brass cap mkd.</p> <div data-bbox="836 1585 1031 1709" data-label="Diagram"> <pre>       T21N R24E       -----       S11 1/4  -----       S14 </pre> </div> <p>2020</p> <p>Bury the mkd. stone inverted and a tin can alongside the stainless steel post.</p>
--------------------------	---------------------------------------------------------------------------------------------------------------------------------------------------------------------------------------------------------------------------------------------------------------------------------------------------------------------------------------------------------------------------------------------------------------------------------------------------------------------------------------------------------------------------------------------------------------------------------------------------------------------------------------------------------------------------------------------------------------------------------------------------------------------------------------------------------------------------------------------------------------------------------------------------------------------------------------------------------------------------------------------------------------------------------------------------------------------------------------------------------------------------------------------------------------------------------------------------------------------------------------------------------------------------------------------------------------------------------------------------------------------------------------------------------------------------------------------------------------------------------------------------------------------------------------------------------------------------------------------------------------------------------------------------------------------------------------------------------------------------------------------------------------------------------------------------------------------------------------------------------------------------------------------------

DEPENDENT RESURVEY OF A PORTION OF THE SUBDIVISIONAL LINES,  
T. 21 N., R. 24 E., MOUNT DIABLO MERIDIAN, NEVADA

CHAINS	Cor. is located at foot of W. facing hill.
	From this cor., a mound of stone, 6 ft. diam., 2 ft. high, bears S. 25° W., 59 lks. dist.
	S. 89°46'40" W., beginning new measurement.
13.693	The closing cor. of secs. 11 and 14, on the E. bdy. of the Pyramid Lake Indian Reservation, monumented with an iron post, 1 in. diam., firmly set, projecting 14 ins. above the ground, in a mound of stone, 4 ft. diam., 1 1/2 ft. high, with brass cap mkd. as described in the field notes of the 1911 dependent resurvey of the subdivision of T. 21 N., R. 24 E., executed under instructions dated April 27, 1911.
	Remark the brass cap to read:
	<div data-bbox="857 747 1029 922" data-label="Diagram"> </div>
	2022
	1911
	Cor. is located in dilapidated barbed wire fence, fence extends SE. and NW.
	From this cor., the true point for the closing cor. of secs. 11 and 14, on the E. bdy. of sec. 15, bears S. 89°46'40" W., 23.105 chs. dist., monumented with a basalt stone, 6x4 ins. (1914 Record, volcanic stone, 12x8x4 ins.), firmly set, 14 ins. below the ground, mkd. with 2 grooves on the E. face and CC on the S. face. W. of and alongside is the witness cor. to the closing cor. of secs. 11 and 14, monumented with an iron post, 1 in. diam., firmly set, flush with the ground, with brass cap mkd. as described in the field notes of the 1911 dependent resurvey of the subdivision of T. 21 N., R. 24 E., executed under instructions dated April 27, 1911.
	Build a mound of stone, 3 ft. base, 1 ft. high, E. of cor.
	From this same cor., the true point for Mile Post 9 1/2, on the E. bdy. of the Pyramid Lake Indian Reservation, hereinbefore described, bears N. 21°42'00" W., 10.975 chs. dist.
	From the cor. of secs. 11, 12, 13 and 14.
	N. 0°10'10" E., bet. secs. 11 and 12.
	Ascend.
8.00	Begin steeper ascent of SE. slope.

DEPENDENT RESURVEY OF A PORTION OF THE SUBDIVISIONAL LINES,  
T. 21 N., R. 24 E., MOUNT DIABLO MERIDIAN, NEVADA

CHAINS	
36.00	Top of high ridge, bears NE. and SW.
39.169	<p>The witness cor. to the 1/4 sec. cor. of secs. 11 and 12, monumented with a basalt stone, 14x11x6 ins. (1905 Record, 14x8x6 ins.), firmly set, projecting 5 ins. above the ground, mkd. with an inverted W and a C on top and 1/4 on W. face.</p> <p>At the corner point</p> <p>Set a stainless steel post, 28 ins. long, 2 1/2 ins. diam., 21 ins. in the ground, to solid rock, over a plastic-encased magnet, and in a collar of stone, with brass cap mkd.</p> <div style="text-align: center;"> <p>WC</p> <p>T21N R24E</p> <p>1/4</p> <p>↑</p> <p>S11    S12</p> </div> <p>2020</p> <p>Bury the mkd. stone inverted alongside the stainless steel post.</p> <p>Cor. is located above small landslide.</p> <hr style="width: 20%; margin: 10px auto;"/> <p>N. 0°18'50" W., beginning new measurement.</p>
0.993	True point for the 1/4 sec. cor. of secs. 11 and 12, at proportionate distance; point falls on S. edge of rocky ravine, where it is impractical to establish a permanent monument.
2.00	Ravine, drains SW.
6.00	Same ravine, drains SSE.
13.50	Head of same ravine, drains SW.
40.725	<p>The cor. of secs. 1, 2, 11 and 12, monumented with a basalt stone, 14x8x8 ins., firmly set, projecting 11 ins. above the ground, mkd. with 1 notch on the E. edge and 5 notches on the S. edge, with a mound of stone, 3 ft. diam., 1 ft. high, W. of cor.</p> <p>At the corner point</p> <p>Set a stainless steel post, 28 ins. long, 2 1/2 ins. diam., 12 ins. in the ground, to solid rock, over a plastic-encased magnet, and in a mound of stone, 3 ft. base, to top, with brass cap mkd.</p>

DEPENDENT RESURVEY OF A PORTION OF THE SUBDIVISIONAL LINES,  
T. 21 N., R. 24 E., MOUNT DIABLO MERIDIAN, NEVADA

CHAINS	
	<div style="text-align: center;"> T21N R24E  S 2   S 1  <hr style="width: 50px; margin: 0 auto;"/> S11   S12    2020 </div> <p>Bury the mkd. stone horizontally alongside the stainless steel post.</p> <p>Cor. is located on slight SE. facing slope.</p> <hr style="width: 300px; margin: 20px auto;"/> <p>N. 0°03'30" W., bet. secs. 1 and 2.</p>
11.00	Top of high ridge, bears NE. and SW.
24.00	Lip of ridge, bears SSE. and NW.
26.00	Head of wash, drains, NW.
40.068	<p>The 1/4 sec. cor. of secs. 1 and 2, monumented with a basalt stone, 15x9x6 ins. (1905 Record, 14x10x8 ins.) firmly set, projecting 9 ins. above the ground, mkd. with 1/4 on W. face, with a mound of stone, 3 ft. diam., 1 1/2 ft. high, W. of cor.</p> <p>At the corner point</p> <p>Set a stainless steel post, 28 ins. long, 2 1/2 ins. diam., 21 ins. in the ground, over a plastic-encased magnet, with brass cap mkd.</p> <div style="text-align: center;"> T21N R24E  1/4  S 2   S 1    2020 </div> <p>Bury the mkd. stone inverted alongside the stainless steel post.</p> <p>Cor. is located on NW. facing slope.</p> <hr style="width: 300px; margin: 20px auto;"/> <p>N. 0°01'30" W., beginning new measurement.</p>
37.00	Wash, drains NW.
42.778	<p>The closing cor. of secs. 1 and 2, T. 21 N., R. 24 E., monumented with a basalt stone, 16x8x7 ins. (1915 Record, lava stone, 6x8x14 ins.), firmly set, projecting 14 ins. above the ground, mkd. with 1 groove on E. face, 5 grooves on W. face, and CC on S. face, with a mound of stone, 3 ft. diam., 1 ft. high, S. of cor.</p> <p>At the corner point</p>

DEPENDENT RESURVEY OF A PORTION OF THE SUBDIVISIONAL LINES,  
T. 21 N., R. 24 E., MOUNT DIABLO MERIDIAN, NEVADA

CHAINS	<p>Set a stainless steel post, 28 ins. long, 2 1/2 ins. diam., 25 ins. in the ground, over a plastic-encased magnet, with brass cap mkd.</p> <div style="text-align: center;"> <p>T22N R24E S35 S 2   S 1 T21N R24E C C</p> </div> <p style="text-align: center;">2020</p> <p>Bury the mkd. stone inverted alongside the stainless steel post. Cor. is located on W. facing slope.</p> <p>From this cor., the cor. of secs. 35 and 36 only, T. 22 N., R. 24 E., hereinbefore described, bears N. 89°54'00" E., 3.401 chs. dist.</p> <hr/> <p>From the cor. of secs. 1, 2, 11 and 12. S. 89°33'10" W., bet. secs. 2 and 11. Ascend.</p> <p>10.00 Top of high ridge, bears NE. and SW.; thence descend.</p> <p>40.282 The 1/4 sec. cor. of secs. 2 and 11, monumented with a basalt stone, 16x8x6 ins., firmly set, projecting 10 ins. above the ground, mkd. 1/4 on the N. face, with a scattered mound of stone, N. of cor.</p> <p>At the corner point</p> <p>Set a stainless steel post, 28 ins. long, 2 1/2 ins. diam., 21 ins. in the ground, over a plastic-encased magnet, with brass cap mkd.</p> <div style="text-align: center;"> <p>T21N R24E S 2 1/4 ——— S11</p> </div> <p style="text-align: center;">2020</p> <p>Bury the mkd. stone inverted alongside the stainless steel post and rebuild the mound of stone, 3 ft. base, 1 1/2 ft. high. Cor. is located on flat of plateau.</p> <hr/> <p>S. 89°55'50" W., beginning new measurement.</p> <p>20.00 Descend abruptly.</p> <p>27.00 Deep ravine, drains, SW.</p>
--------	----------------------------------------------------------------------------------------------------------------------------------------------------------------------------------------------------------------------------------------------------------------------------------------------------------------------------------------------------------------------------------------------------------------------------------------------------------------------------------------------------------------------------------------------------------------------------------------------------------------------------------------------------------------------------------------------------------------------------------------------------------------------------------------------------------------------------------------------------------------------------------------------------------------------------------------------------------------------------------------------------------------------------------------------------------------------------------------------------------------------------------------------------------------------------------------------------------------------------------------------------------------------------------------------------------------------------------------------------------------------------------------------------------------------------------------------------------------------------------------------------------------------------------------------------------------------------

DEPENDENT RESURVEY OF A PORTION OF THE SUBDIVISIONAL LINES,  
T. 21 N., R. 24 E., MOUNT DIABLO MERIDIAN, NEVADA

CHAINS	
30.00	Spur of ridge, bears NE. and SW.
39.516	<p>The cor. of secs. 2, 3, 10 and 11, monumented with a basalt stone, 20x12x6 ins., (1911 record, volcanic stone 10x8x8 ins.), firmly set, projecting 12 ins. above the ground, mkd. with 2 notches on the E. edge and 5 notches on the S. edge.</p> <p>At the corner point</p> <p>Set a stainless steel post, 28 ins. long, 2 1/2 ins. diam., 19 ins. in the ground, to solid rock, over a plastic-encased magnet, and in a mound of stone, 3 ft. base, to top, with brass cap mkd.</p> <div style="text-align: center;"> <p>T21N R24E</p> <p>S 3   S 2</p> <hr style="width: 50%; margin: 0 auto;"/> <p>S10   S11</p> </div> <p>2020</p> <p>Bury the mkd. stone inverted alongside the stainless steel post.</p> <p>Cor. is located on rocky SW. facing slope.</p> <hr/> <p>S. 0°13'40" E., bet. secs. 10 and 11.</p>
2.00	Gully, drains NW.
4.50	Hill, bears E. and W.
6.50	Gully, drains SW.
13.232	<p>The closing cor. of secs. 10 and 11 on the E. bdy. of the Pyramid Lake Indian Reservation, monumented with an iron post, 1 in. diam., firmly set, projecting 12 ins. above the ground, with brass cap mkd. as described in the field notes of the 1911 dependent resurvey of the subdivision of T. 21 N., R. 24 E., executed under instructions dated April 27, 1911.</p> <p>Remark the brass cap to read:</p> <div style="text-align: center;"> <p>T21N R24E</p> <p>C C</p> <p>S10</p> <div style="display: inline-block; vertical-align: middle;"> <div style="border-left: 1px solid black; height: 40px; position: relative; width: 10px;"> <div style="position: absolute; top: 0; left: -2px; right: -2px; height: 100%;"> <div style="position: absolute; top: 0; left: 0; right: 0; height: 100%; border-left: 1px solid black;"></div> </div> </div> <p>S11</p> <p>PLIR</p> <p>2022</p> <p>1911</p> </div> <p>Cor. is located in row of rocks, extending SE. and NW.</p> </div>

DEPENDENT RESURVEY OF A PORTION OF THE SUBDIVISIONAL LINES,  
T. 21 N., R. 24 E., MOUNT DIABLO MERIDIAN, NEVADA

CHAINS	
	<p>From this cor., the true point for the 1/4 sec. cor. of secs. 10 and 11, bears S. 0°00'20" E., 26.838 chs. dist., monumented with a chiseled X 1/4 on the NW face of rock outcropping. W. of and alongside is the witness cor. to the 1/4 sec. cor. of secs. 10 and 11, monumented with an iron post, 1 in. diam., firmly wedged in a crack of the rock, projecting 16 ins. out of the rock, with brass cap mkd. as described in the field notes of the 1911 dependent resurvey of the subdivision of T. 21 N., R. 24 E., executed under instructions dated April 27, 1911, with a mound of stone, 3 ft. diam., 2 1/2 ft. high, W. of cor. Add the marks T21N R24E 2022, and an arrow pointing to the corner to the brass cap.</p> <p>From this same cor., the true point for Mile Post 10 1/2, on the E. bdy. of the Pyramid Lake Indian Reservation, hereinbefore described, bears N. 21°40'40" W., 19.178 chs. dist.</p> <hr/> <p>From the cor. of secs. 2, 3, 10 and 11.</p> <p>N. 0°05'50" W., bet. secs. 2 and 3.</p> <p>Ascend along W. slope of high ridge.</p>
28.00	Top of NW. spur.
31.50	Ravine, drains W.
40.190	<p>The 1/4 sec. cor. of secs. 2 and 3, monumented with a basalt stone, 22x10x8 ins. (1905 Record, 18x10x8 ins.), firmly set, projecting 18 ins. above the ground, mkd. with 1/4 on W. face, with a scattered mound of stone, W. of cor.</p> <p>At the corner point</p> <p>Set a stainless steel post, 28 ins. long, 2 1/2 ins. diam., 21 ins. in the ground, to solid rock, over a plastic-encased magnet, and in a collar of stone, with brass cap mkd.</p> <div style="text-align: center;"> <p>T21N R24E</p> <p>1/4</p> <div style="display: inline-block; text-align: center;"> <p>S 3</p> <p> </p> <p>S 2</p> </div> <p>2020</p> </div> <p>Bury the mkd. stone inverted alongside the stainless steel post.</p> <p>Cor. is located on rocky W. facing slope.</p> <hr/> <p>N. 0°12'00" W., beginning new measurement.</p>
38.00	Gully, drains, W.



DEPENDENT RESURVEY OF A PORTION OF THE SUBDIVISIONAL LINES,  
T. 21 N., R. 24 E., MOUNT DIABLO MERIDIAN, NEVADA

CHAINS  
43.005

The closing cor. of secs. 2 and 3, T. 21 N., R. 24 E., monumented with a basalt stone, 18x8x8 ins., firmly set, projecting 14 ins. above the ground, (1915 Record, lava stone, 10x8x14 ins.) mkd. with 2 grooves on E. face, CC on S. face, and 4 grooves on W. face, with a mound of stone, 3 1/2 ft. diam., 2 1/2 ft. high, S. of cor.

At the corner point

Set a stainless steel post, 28 ins. long, 2 1/2 ins. diam., 25 ins. in the ground, over a plastic-encased magnet, with brass cap mkd.

T22N R24E  
S34  
S 3 | S 2  
T21N R24E  
C C

2020

Bury the mkd. stone inverted alongside the stainless steel post.

Cor. is located on steep rocky W. facing slope; on S. edge of small gully, drains SW.; and N. of small gully drains NW.; and approximately NE., 1 ch. dist. of conflux of these gullies.

From this cor., the cor. of secs. 34 and 35 only, T. 22 N., R. 24 E., hereinbefore described, bears S. 89°37'30" E., 2.890 chs. dist.

The point for the 1/4 sec. cor. of sec. 2 only, T. 21 N., R. 24 E., is on the S. bdy. of T. 22 N., R. 24 E., and at midpoint in departure on the N. bdy. of sec. 2.

At the corner point

Set a stainless steel post, 28 ins. long, 2 1/2 ins. diam., 24 ins. in the ground, over a plastic-encased magnet, in a collar of stone, with brass cap mkd.

T22N R24E  
1/4 S 2  
T21N R24E

2021

Cor. is located on W. facing slope.

From this cor., the 1/4 sec. cor. of sec. 35, T. 22 N., R. 24 E., bears S. 89°57'20" E., 3.290 chs. dist.

DEPENDENT RESURVEY OF A PORTION OF THE SUBDIVISIONAL LINES,  
T. 21 N., R. 24 E., MOUNT DIABLO MERIDIAN, NEVADA

CHAINS	<p>From the cor. of secs. 2, 3, 10 and 11.</p> <p>S. 89°52'00" W., bet. secs. 3 and 10.</p>
2.50	Gully, drains, NW.
5.203	<p>Intersect the E. bdy. of the Pyramid Lake Indian Reservation.</p> <p>True point for the closing cor. of secs. 3 and 10, at intersection of the sec. line bet. secs. 3 and 10, with the E. bdy. of the Pyramid Lake Indian Reservation, falls in rocky gully where it is impractical to establish a permanent monument.</p> <p>From this point, Mile Post 10 1/2, on the E. bdy. of the Pyramid Lake Indian Reservation, hereinbefore described, bears N. 21°40'40" W., 4.952 chs. dist.</p>
5.503	<p>The witness cor. to the closing cor. of secs. 3 and 10, on the E. bdy. of the Pyramid Lake Indian Reservation, monumented with an iron post, 1 in. diam., firmly set, projecting 12 ins. above a mound of stone, 3 ft. diam., 1 ft. high, with brass cap mkd. as described in the field notes of the 1911 dependent resurvey of the subdivision of T. 21 N., R. 24 E., executed under instructions dated April 27, 1911.</p> <p>Remark the brass cap to read:</p> <div style="text-align: center;"> <p>WC</p> <p>T21N R24E</p> <p>S 3</p> <p>PLIR — C —&gt;</p> <p>S10</p> <p>2022</p> <p>1911</p> </div> <p>Cor. is located in gully.</p> <p>From this cor., the true point for the 1/4 sec. cor. of secs. 3 and 10, bears S. 89°52'00" W., 34.459 chs. dist., monumented with a basalt stone, 15x8x8 ins. (1911 record, volcanic stone, 12x8x8 ins.), firmly set, projecting 6 ins. above the ground, mkd. 1/4 on the N. face, with a mound of stone, 3 ft. diam., 1 ft. high, N. of cor. W. of and alongside is the remains of the witness cor. to the 1/4 sec. cor. of secs. 3 and 10, monumented with a corroded iron post, 1 in. diam., firmly set, projecting 10 ins. above the ground, with brass cap mkd. as described in the field notes of the 1911 dependent resurvey of a portion of the subdivision of T. 21 N., R. 24 E., executed under instructions dated April 27, 1911.</p> <p>At the corner point</p> <p>Set a stainless steel post, 28 ins. long, 2 1/2 ins. diam., 26 ins. in the ground, over a plastic-encased magnet, with brass cap mkd.</p>

DEPENDENT RESURVEY OF A PORTION OF THE SUBDIVISIONAL LINES,  
T. 21 N., R. 24 E., MOUNT DIABLO MERIDIAN, NEVADA

CHAINS

T21N R24E

S 3

1/4 ———

S10

2022

Bury the mkd. stone inverted and the remains of the iron post  
alongside the stainless steel post and rebuild the mound of  
stone, 3 ft. base, 1 1/2 ft. high.

DEPENDENT RESURVEY OF A PORTION OF THE  
SUBDIVISION-OF-SECTION LINES OF SECTION 23,  
T. 21 N., R. 24 E., MOUNT DIABLO MERIDIAN, NEVADA

Reestablishment of a Portion of the Survey Executed by  
G. P. Harrington in 1911

From the center 1/4 sec. cor. of sec. 23, monumented with an  
iron post, 1 in. diam., firmly set, 4 ins. below the ground,  
with the top 18 ins. lying loose on top of the ground with brass  
cap mkd. as described in the field notes of the 1911 survey of  
the subdivision of T. 21 N., R. 24 E., executed under  
instructions dated April 27, 1911.

At the corner point

Set a stainless steel post, 28 ins. long, 2 1/2 ins. diam.,  
24 ins. in the ground, over a plastic-encased magnet, in a  
collar of stone, with brass cap mkd.

T21N R24E

C 1/4 S23

2022

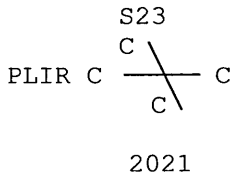
Cor. is located on sandy NW. facing slope.

From this cor., the 1/4 sec. cor. of secs. 14 and 23,  
hereinbefore described, bears N. 0°16'50" W., 39.804 chs. dist.

From this same cor., the 1/4 sec. cor. of secs. 23 and 26,  
hereinbefore described, bears S. 0°08'30" E., 39.996 chs. dist.

N. 89°55'30" E., on the E-W center line of sec. 23.

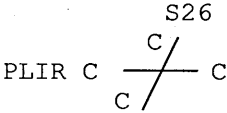
DEPENDENT RESURVEY OF A PORTION OF THE  
SUBDIVISION-OF-SECTION LINES OF SECTION 23,  
T. 21 N., R. 24 E., MOUNT DIABLO MERIDIAN, NEVADA

<p>CHAINS 33.823</p>	<p>Intersect the E. bdy. of the Pyramid Lake Indian Reservation.</p> <p>Point for the closing 1/4 sec. cor. of sec. 23, on the E-W center line of sec. 23, at intersection of the E-W center line of sec. 23, with the E. bdy. of the Pyramid Lake Indian Reservation. The 1911 iron post, 1 in. diam., 36 ins. long, was found bent and lying loose, S. 22° E., 1.44 chs. dist., original position indeterminate, with brass cap mkd. as described in the field notes of the 1911 survey of the subdivision of T. 21 N., R. 24 E., executed under instructions dated April 27, 1911.</p> <p>At the corner point</p> <p>Set a stainless steel post, 28 ins. long, 2 1/2 ins. diam., 25 ins. in the ground, over a plastic-encased magnet, with brass cap mkd.</p> <div style="text-align: center;">  </div> <p>Bury the iron post inverted, alongside the stainless steel post.</p> <p>From this cor., Mile Post 7 1/2, on the E. bdy. of the Pyramid Lake Indian Reservation, hereinbefore described, bears S. 21°44'50" E., 19.421 chs. dist.</p>
<p>40.028</p>	<p>The 1/4 sec. cor. of secs. 23 and 24, hereinbefore described.</p> <hr/> <p style="text-align: center;">DEPENDENT RESURVEY OF A PORTION OF THE SUBDIVISION-OF-SECTION LINES OF SECTION 26, T. 21 N., R. 24 E., MOUNT DIABLO MERIDIAN, NEVADA</p> <hr/> <p style="text-align: center;">Reestablishment of a Portion of the Survey Executed by G. P. Harrington in 1911</p> <hr/> <p>From the 1/4 sec. cor. of secs. 26 and 35.</p> <p>N. 0°05'20" W., on the N-S center line of sec. 26.</p>
<p>11.188</p>	<p>Intersect the E. bdy. of the Pyramid Lake Indian Reservation.</p> <p>Point for the closing 1/4 sec. cor. of sec. 26, on the N-S center line of sec. 26, at intersection of the N-S center line of sec. 26, with the E. bdy. of the Pyramid Lake Indian Reservation.</p> <p>At the corner point</p> <p>Set a stainless steel post, 28 ins. long, 2 1/2 ins. diam., 24 ins. in the ground, over a plastic-encased magnet, with brass cap mkd.</p>

DEPENDENT RESURVEY OF A PORTION OF THE  
SUBDIVISION-OF-SECTION LINES OF SECTION 26,  
T. 21 N., R. 24 E., MOUNT DIABLO MERIDIAN, NEVADA

CHAINS	
	<p style="text-align: center;">S26 PLIR C C C C</p> <p style="text-align: center;">2021</p> <p>Cor. is located in dilapidated barbed wire fence, fence extends NE. and SW.; and W., 20 lks. dist. of sand road, 15 lks. wide, bears NE. and SW.</p> <p>From this cor., a position monumented as the closing 1/4 sec. cor. of sec. 26, during the 1911 survey, bears N. 27°26'20" E., 0.708 chs. dist., monumented with an iron post, 1 in. diam., firmly set, projecting 7 ins. above the ground, with brass cap mkd. as described in the field notes of the 1911 survey of the subdivision of T. 21 N., R. 24 E., executed under instructions dated April 27, 1911. This position does not correlate with the measurements in the 1911 field notes within acceptable limits and is not utilized during the course of this survey. Remove the original markings, add the marks AM to the brass cap and bury inverted at same point. Amended position is located in dilapidated barbed wire fence, fence extends NE. and SW.; and W., 20 lks. dist. of sand road, 15 lks. wide, bears NE. and SW.</p> <p>From this same cor., Mile Post 6, on the E. bdy. of the Pyramid Lake Indian Reservation, hereinbefore described, bears S. 27°26'20" W., 17.629 chs. dist.</p>
39.994	<p>The center 1/4 sec. cor. of sec. 26, monumented with an iron post, 1 in. diam., firmly set, projecting 12 ins. above the ground, with brass cap mkd. as described in the field notes of the 1911 survey of the subdivision of T. 21 N., R. 24 E., executed under instructions dated April 27, 1911. Add the marks T21N R24E 2022 to the brass cap.</p> <p>From this cor., a rebar, no record found, 5/8 in. diam., firmly set, projecting 2 ins. above the ground, with white plastic panel point remains, bears S. 42°56'30" W., 1.535 chs. dist., not utilized during the course of this survey.</p> <p>From this same cor., the 1/4 sec. cor. of secs. 23 and 26, hereinbefore described, bears N. 0°05'20" W., 39.918 chs. dist.</p>
15.008	<p>N. 89°53'40" E., on the E-W center line of sec. 26.</p> <p>Intersect the E. bdy. of the Pyramid Lake Indian Reservation.</p> <p>Point for the closing 1/4 sec. cor. of sec. 26, at intersection of the E-W center line of sec. 26, with the E. bdy. of the Pyramid Lake Indian Reservation; there is no remaining evidence of the 1911 iron post.</p> <p>At the corner point</p>

DEPENDENT RESURVEY OF A PORTION OF THE  
SUBDIVISION-OF-SECTION LINES OF SECTION 26,  
T. 21 N., R. 24 E., MOUNT DIABLO MERIDIAN, NEVADA

CHAINS	<p>Set a stainless steel post, 28 ins. long, 2 1/2 ins. diam., 24 ins. in the ground, over a plastic-encased magnet, with brass cap mkd.</p> <div><div>S26</div><div>PLIR C </div><div>2021</div></div> <p>Cor. is located in dilapidated barbed wire fence, under H brace, fence extends NE. and SW.; and W., 20 lks. dist. of sand road, 15 lks. wide, bears NE. and SW.</p> <p>From this cor., Mile Post 6 1/2, on the E. bdy. of the Pyramid Lake Indian Reservation, hereinbefore described, bears S. 27°26'00" W., 10.264 chs. dist.</p> <p>39.958 The 1/4 sec. cor. of secs. 25 and 26, hereinbefore described.</p> <div><div>GENERAL DESCRIPTION</div><p>The average elevation of the area surveyed is approximately 4,500 feet above sea level. General drainage is to the west. Vegetation consists of sagebrush in the lower elevations, the hills and plateaus are void of vegetation because of fire in the recent past. Soils consist mainly of sand in the lower elevations, basalt and granite stone on the hills and plateaus. The Truckee River flows through the township, no other water sources were encountered.</p></div>
--------	------------------------------------------------------------------------------------------------------------------------------------------------------------------------------------------------------------------------------------------------------------------------------------------------------------------------------------------------------------------------------------------------------------------------------------------------------------------------------------------------------------------------------------------------------------------------------------------------------------------------------------------------------------------------------------------------------------------------------------------------------------------------------------------------------------------------------------------------------------------------------------------------------------------------------------------------------------------------------------------------------------------------------------------------------------------------------------------------------------------------------------------------------------------------------------------------------------------------------------

UNITED STATES  
DEPARTMENT OF THE INTERIOR  
BUREAU OF LAND MANAGEMENT

FIELD ASSISTANTS

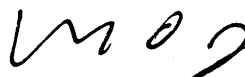
Shane T. Trotter	Cadastral Surveyor
Miguel A. Garcia	Cadastral Surveyor
Alex J. Yetsko	Survey Technician
Nathan D. Mersino	Student trainee (Survey)
Cameron T. Biddlecome	GIS Specialist

## CERTIFICATE OF SURVEY

I, Michael O. Jones, Cadastral Surveyor, HEREBY CERTIFY upon honor that, in pursuance of special instructions bearing the date of the 8th day of June, 2020, I have dependently resurveyed a portion of the Pyramid Lake Indian Reservation boundary, a portion of the south boundary of Township 22 North, Range 24 East, a portion of the subdivisional lines, and portions of the subdivision-of-section lines of sections 23 and 26, Township 21 North, Range 24 East, of the Mount Diablo Meridian, in the State of Nevada, which are represented in the foregoing field notes as having been executed by me and under my direction; and that said survey has been made in strict conformity with said special instructions, the Manual of Instructions for the Survey of the Public Lands of the United States, and in specific manner described in the foregoing field notes.

AUG 31 2022

(Date)



(Cadastral Surveyor)

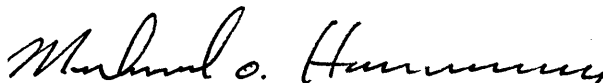
## CERTIFICATE OF APPROVAL

BUREAU OF LAND MANAGEMENT  
Reno, Nevada

The foregoing field notes of the dependent resurvey of a portion of the Pyramid Lake Indian Reservation boundary, a portion of the south boundary of Township 22 North, Range 24 East, a portion of the subdivisional lines, and portions of the subdivision-of-section lines of sections 23 and 26, Township 21 North, Range 24 East, of the Mount Diablo Meridian, Nevada, executed by Michael O. Jones, Cadastral Surveyor, having been critically examined and found correct, are hereby approved.

SEP 07 2022

(Date)



(Chief Cadastral Surveyor for Nevada)

~~CERTIFICATE OF TRANSCRIPT~~

~~I CERTIFY that the foregoing transcript of the field notes of the above described surveys in Township 21 North, Range 24 East, Mount Diablo Meridian, Nevada, is a true copy of the original field notes.~~

~~(Date)~~~~(Chief Cadastral Surveyor for Nevada)~~