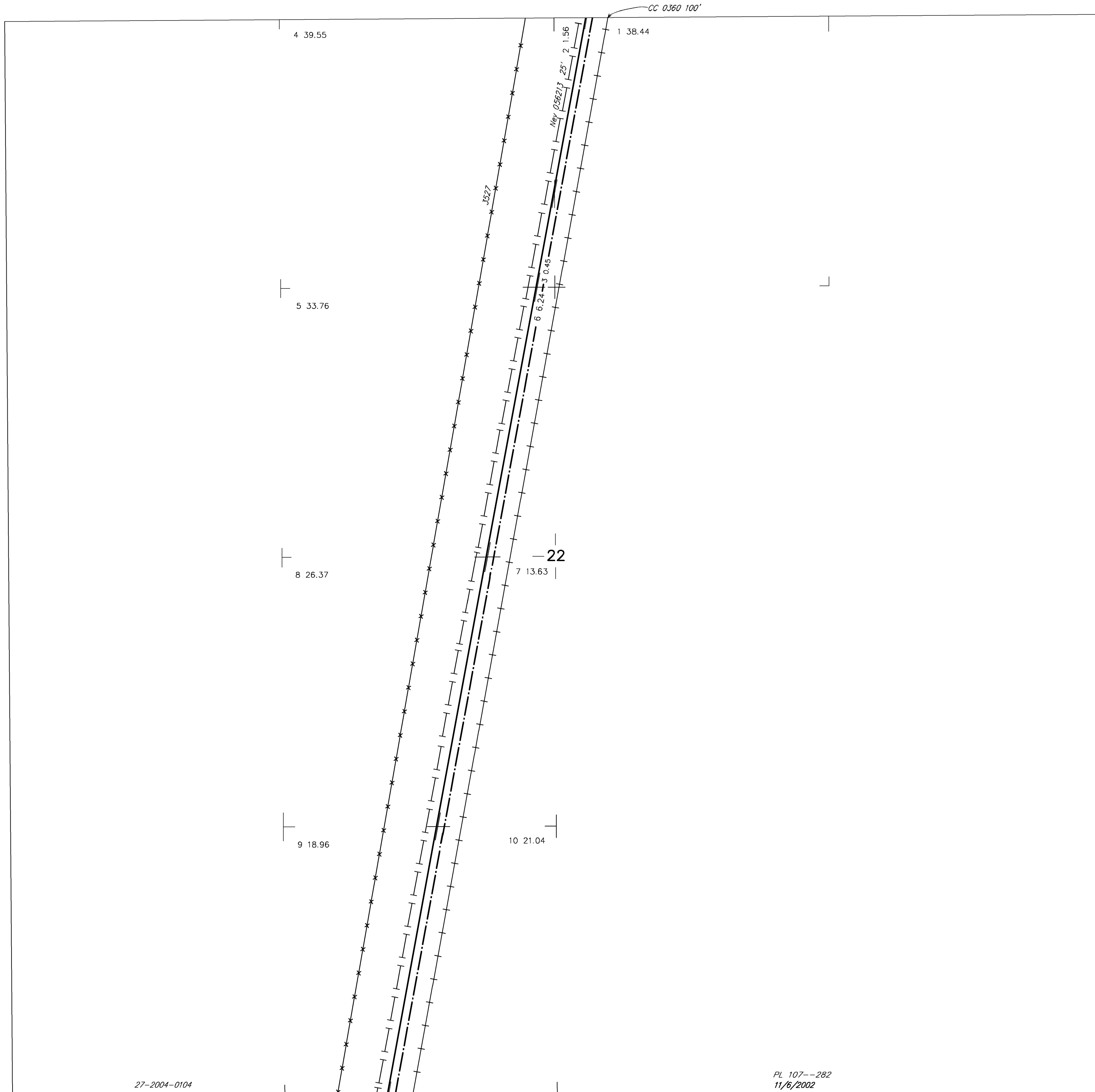


# TOWNSHIP 26 SOUTH RANGE 59 EAST OF THE MOUNT DIABLO MERIDIAN, NEVADA

CLARK COUNTY  
LAS VEGAS GR DIST

STATUS OF PUBLIC DOMAIN  
LAND AND MINERAL TITLES

## MTP Suppl Sec 22



INDEX TO SEGREGATED TRACTS				
RESURVEY	ORIGINAL SURVEY			
TRACT NO	T	R	SEC	SUBDIVISION

*FOR ORDERS EFFECTING DISPOSAL OR USE OF UNIDENTIFIED LANDS WITHDRAWN FOR CLASSIFICATION, MINERALS, WATER AND/OR OTHER PUBLIC PURPOSES, REFER TO INDEX OF MISCELLANEOUS DOCUMENTS.*

CURRENT TO	BY	CURRENT TO	BY
9/28/07	SLL		
5/19/08	MS		
5/29/08	SLL		