

TOWNSHIP 26 SOUTH RANGE 59 EAST OF THE MOUNT DIABLO MERIDIAN, NEVADA

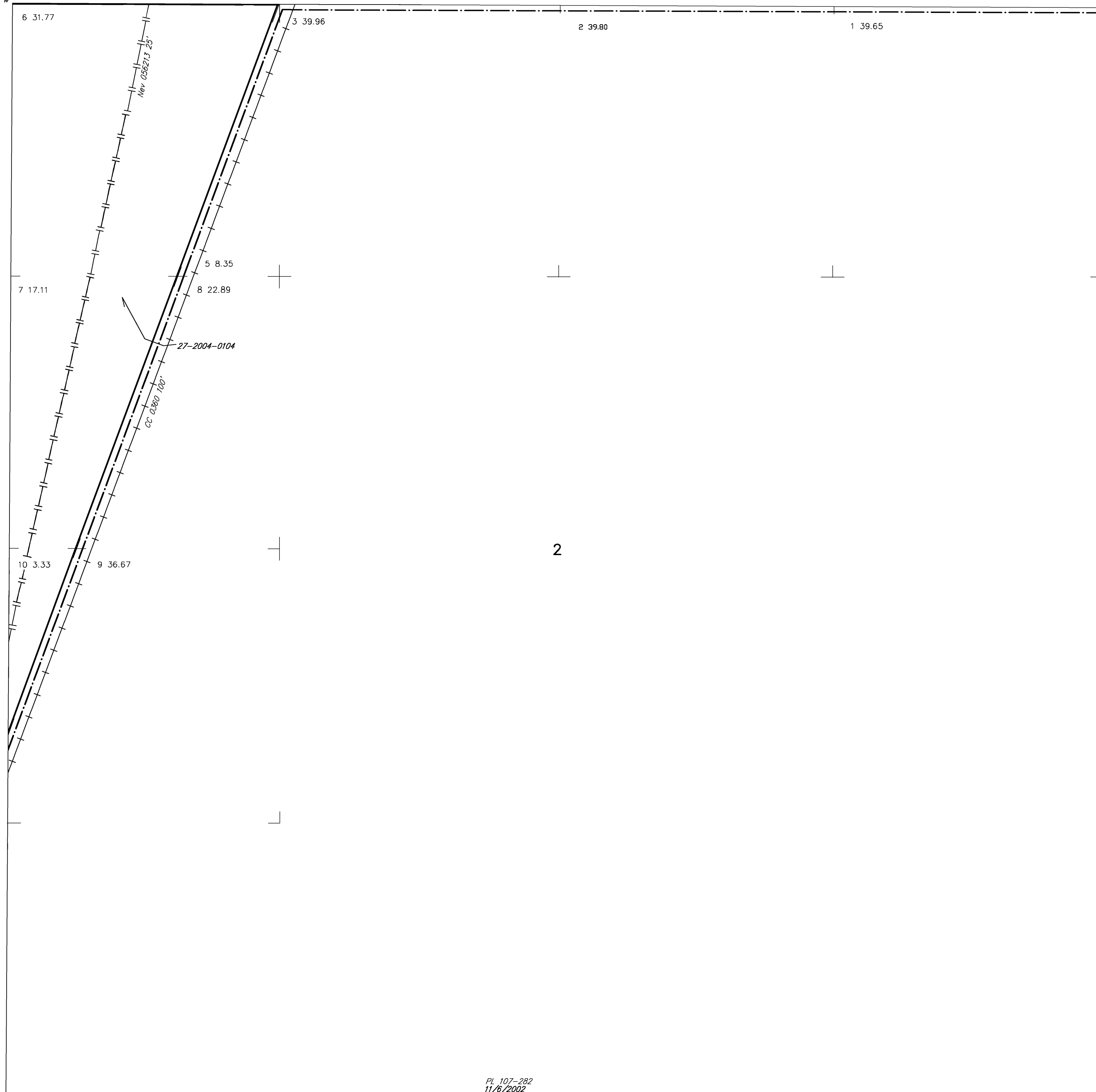
CLARK COUNTY
LAS VEGAS GR DIST

STATUS OF PUBLIC DOMAIN
LAND AND MINERAL TITLES

MTP Suppl Sec 2

[illegible]

FOR ORDERS EFFECTING DISPOSAL OR USE OF
UNIDENTIFIED LANDS WITHDRAWN FOR CLASSIFICATION
MINERALS, WATER AND/OR OTHER PUBLIC PURPOSES:
REFER TO INDEX OF MISCELLANEOUS DOCUMENTS.



CURRENT TO	BY	CURRENT TO	BY
9/28/07	SLL		
5/19/08	MS		
5/29/08	SLL		

N-050
T. 26 S
R. 59 E
Sec 2
#4