

SURVEYED TOWNSHIP 25 SOUTH RANGE 58 EAST OF THE MOUNT DIABLO MERIDIAN, NEVADA

CLARK COUNTY
LAS VEGAS GR DIST

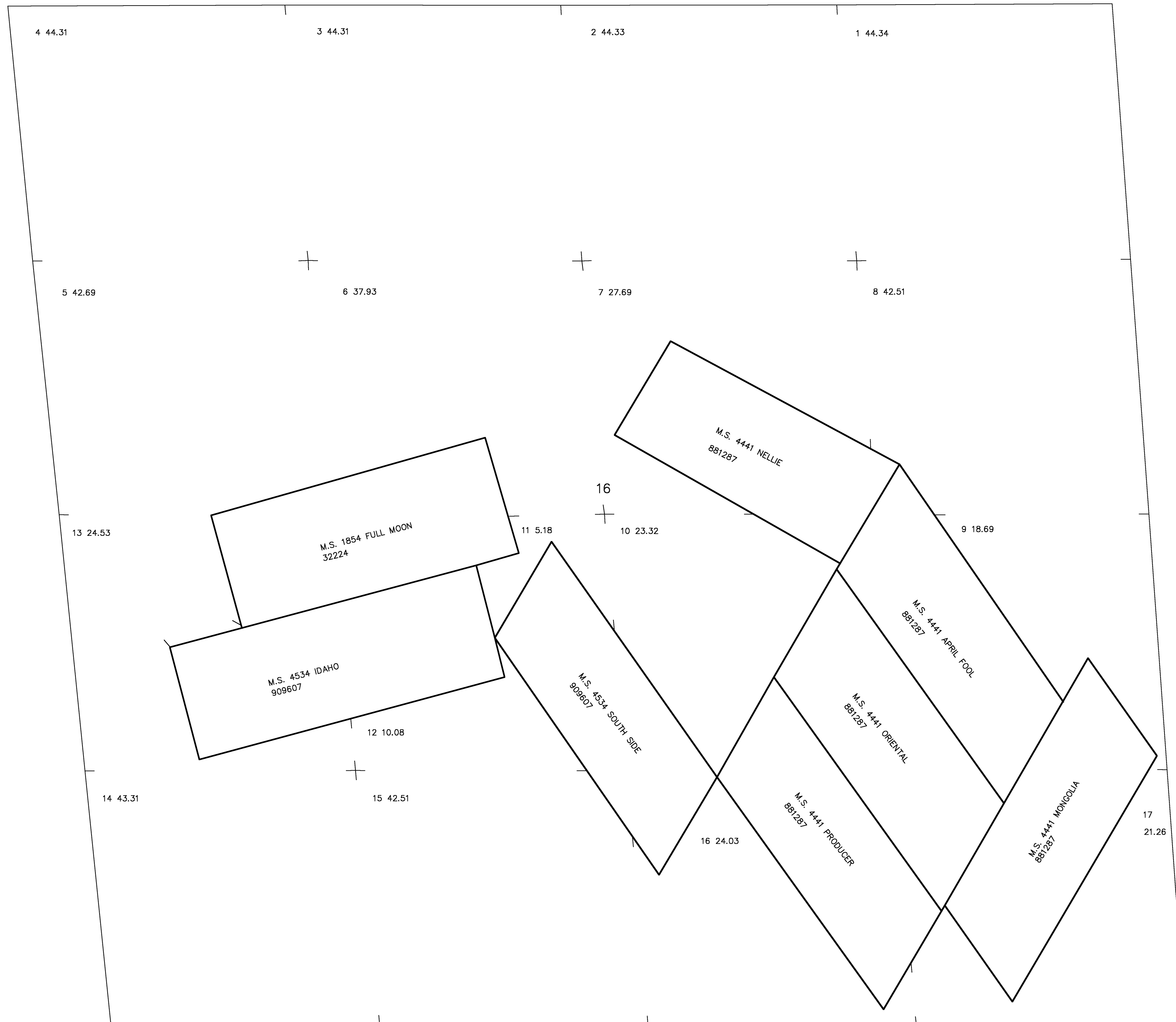
STATUS OF PUBLIC DOMAIN LAND AND MINERAL TITLES AND ACQUIRED LANDS

MT SUPPL PLAT 16

[illegible]

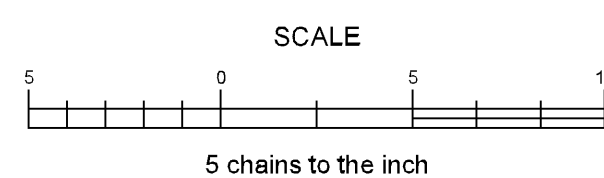
FOR ORDERS EFFECTING DISPOSAL OR USE OF
UNIDENTIFIED LANDS WITHDRAWN FOR CLASSIFICATION,
MINERALS, WATER AND/OR OTHER PUBLIC PURPOSES.
REFER TO INDEX OF MISCELLANEOUS DOCUMENTS.

The legal land descriptions of certain Mineral Surveys depicted hereon may have been altered based upon the dependent resurvey filed August 2, 2022; the subdivision lines and certain mineral survey corner markers contained hereon have been restored to their original locations according to the best available evidence.



WARNING STATEMENT

This plat is the Bureau's representation of the Record of Title and should be used only as a graphic display of the township survey data. Records hereon do not reflect title changes which may have been effected by the lateral movements of rivers or other bodies of water. Refer to the cadastral surveys for official survey information.



CURRENT TO	BY	CURRENT TO	BY
08/11/2022	LAL		

PLAT TYPE

25 S
58 E
Dec 16