

SURVEYED TOWNSHIP 25 SOUTH RANGE 58 EAST OF THE MOUNT DIABLO MERIDIAN, NEVADA

CLARK COUNTY
LAS VEGAS GR DIST

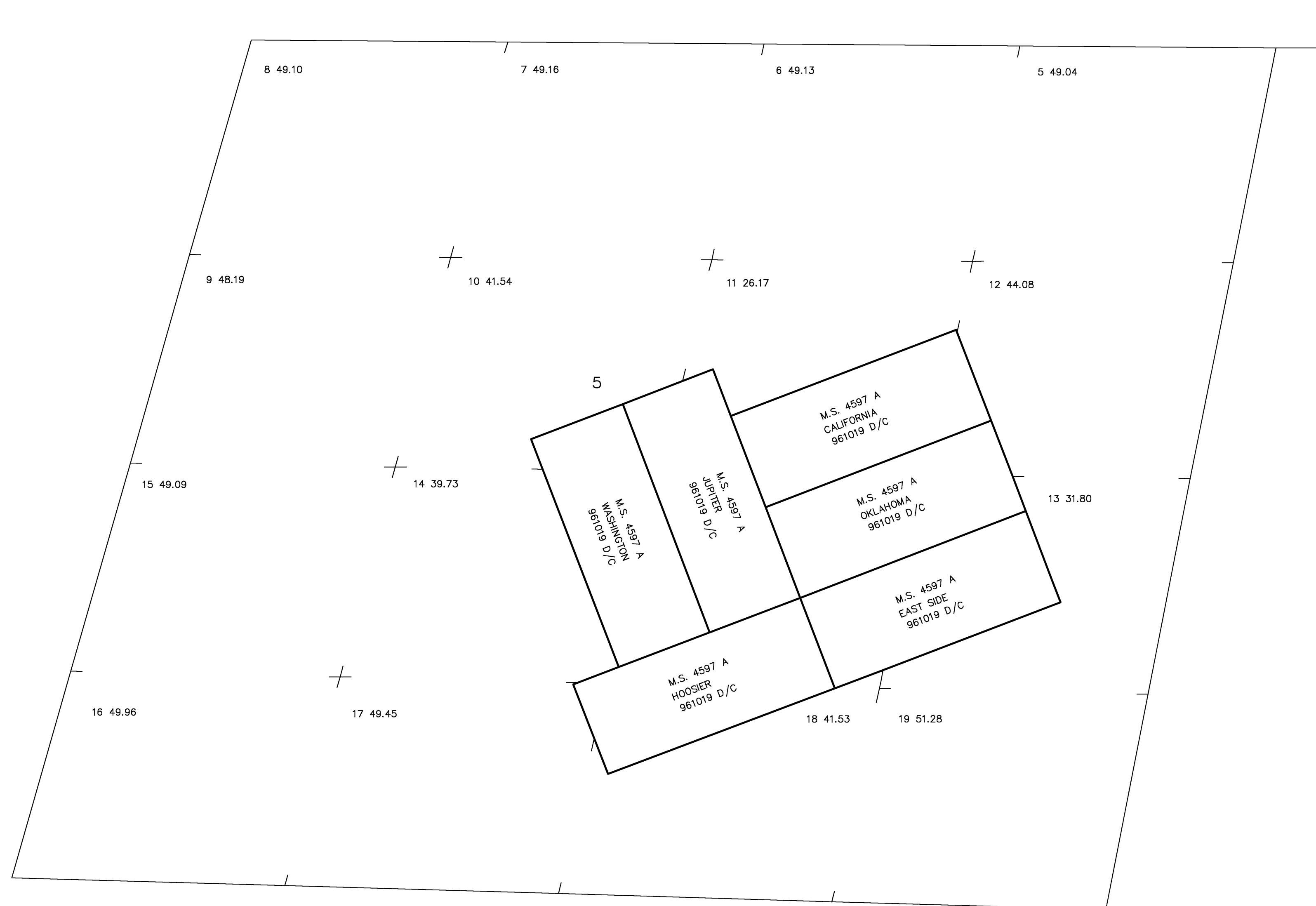
STATUS OF PUBLIC DOMAIN LAND AND MINERAL TITLES AND ACQUIRED LANDS

MTP SUPPL SEC 5 PLAT

[illegible]

FOR ORDERS EFFECTING DISPOSAL OR USE OF
UNIDENTIFIED LANDS WITHDRAWN FOR CLASSIFICATION,
MINERALS, WATER AND/OR OTHER PUBLIC PURPOSES.
REFER TO INDEX OF MISCELLANEOUS DOCUMENTS.

The legal land descriptions of certain Mineral Surveys depicted hereon
may have been altered based upon the dependent resurvey filed
August 2, 2022; the subdivision lines and certain mineral survey
corner markers contained hereon have been restored to their
original locations according to the best available evidence.



CURRENT TO	BY	CURRENT TO	BY
08/10/2022	LAJ		

25 S
58 E
Dec 5

PLAT TYPE

WARNING STATEMENT

This plat is the Bureau's representation of the Record of Title and should be used only as a graphic display of the township survey data. Records hereon do not reflect title changes which may have been effected by the lateral movements of rivers or other bodies of water. Refer to the cadastral surveys for official survey information.

