

**SURVEYED TOWNSHIP 24 SOUTH RANGE 57 EAST OF THE MOUNT DIABLO MERIDIAN, NEVADA**

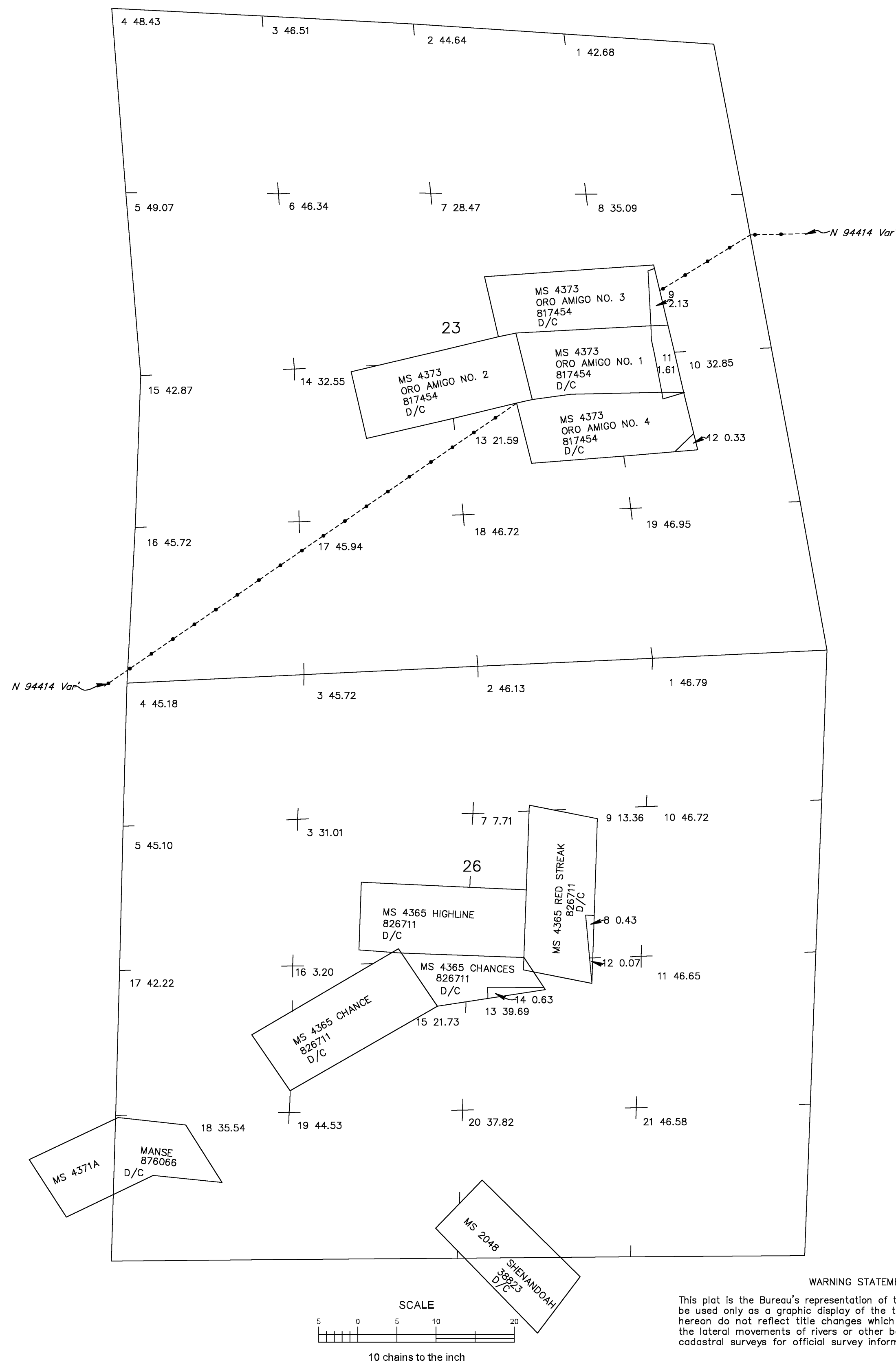
CLARK COUNTY  
LAS VEGAS GR DIST

## STATUS OF PUBLIC DOMAIN LAND AND MINERAL TITLES AND ACQUIRED LANDS

**MT  
SUPPL SECS 23 & 26**

[illegible]

FOR ORDERS EFFECTING DISPOSAL OR USE OF  
UNIDENTIFIED LANDS WITHDRAWN FOR CLASSIFICATION,  
MINERALS, WATER AND/OR OTHER PUBLIC PURPOSES.  
REFER TO INDEX OF MISCELLANEOUS DOCUMENTS.



CURRENT TO	BY	CURRENT TO	BY
08/03/2023	LAJ		

PLAT TYPE

secs 23, 26