

TOWNSHIP 22 SOUTH RANGE 63 EAST OF THE MOUNT DIABLO MERIDIAN, NEVADA

CLARK COUNTY
LAS VEGAS GR DIST
21

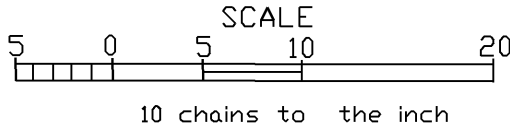
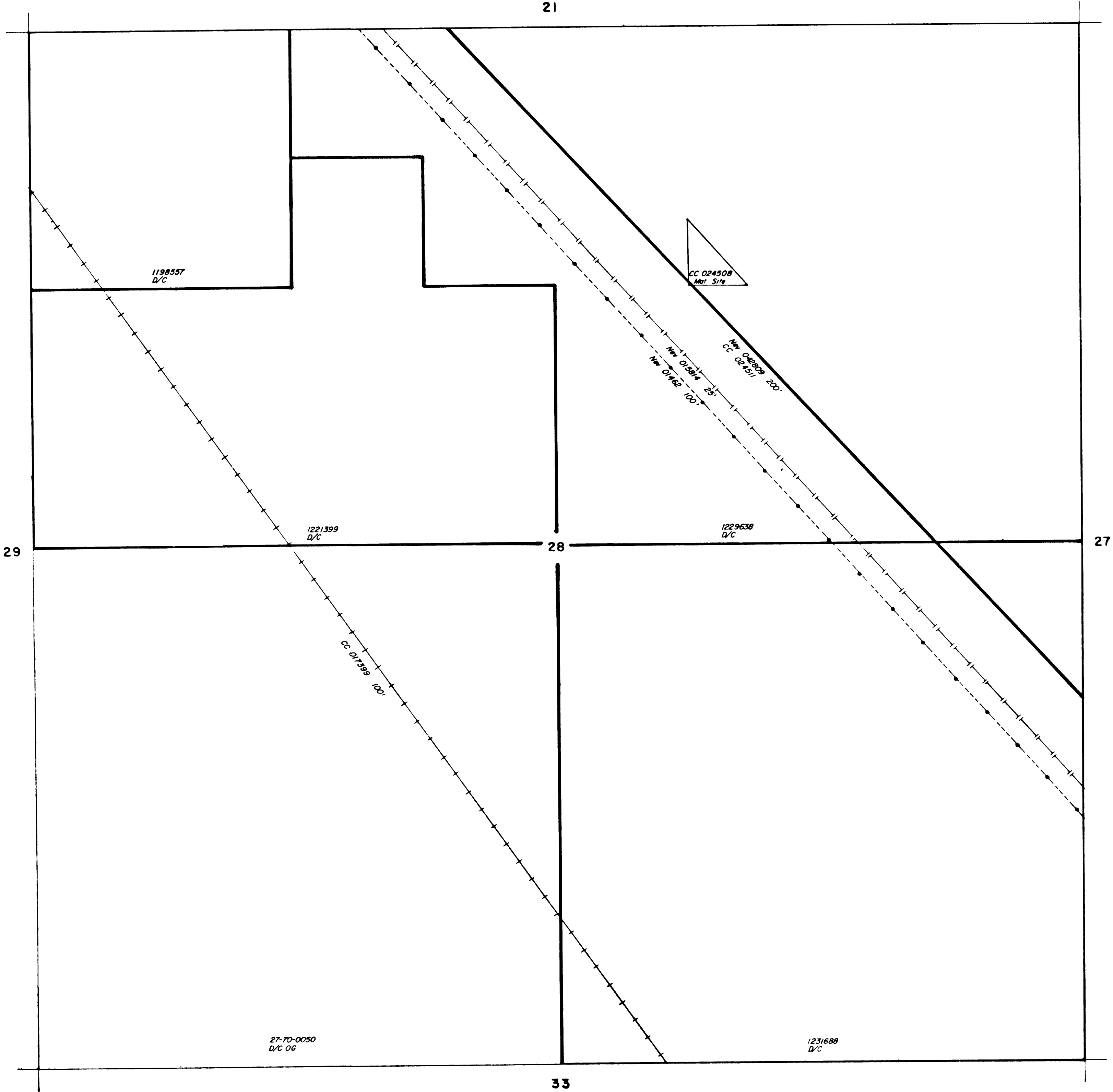
STATUS OF PUBLIC DOMAIN
LAND AND MINERAL TITLES

MTP
SUPPL Sec 28

INDEX TO SEGREGATED TRACTS				
RESURVEY		ORIGINAL SURVEY		
TRACT NO	T	R	SEC	SUBDIVISION

FOR ORDERS EFFECTING DISPOSAL OR USE OF
UNIDENTIFIED LANDS WITHDRAWN FOR CLASSIFICATION,
MINERALS, WATER AND/OR OTHER PUBLIC PURPOSES,
REFER TO INDEX OF MISCELLANEOUS DOCUMENTS.

Certain lands in Sec 28 of this Tp are affected by
unrecorded public dedications for roads and utilities due
to previous small Tr Cl. See the historical index for specific
lands affected by small Tr Cl.



WARNING STATEMENT

This plot is the Bureau's Record of Title and should be used only
as a graphic display of the township survey data. Records hereon
do not reflect title changes which may have been effected
by lateral movements of rivers or other bodies of water. Refer
to the cadastral surveys for official survey information.

CURRENT TO	BY
12-18-51	
2-24-52	

N 050
T. 22S
R. 63E