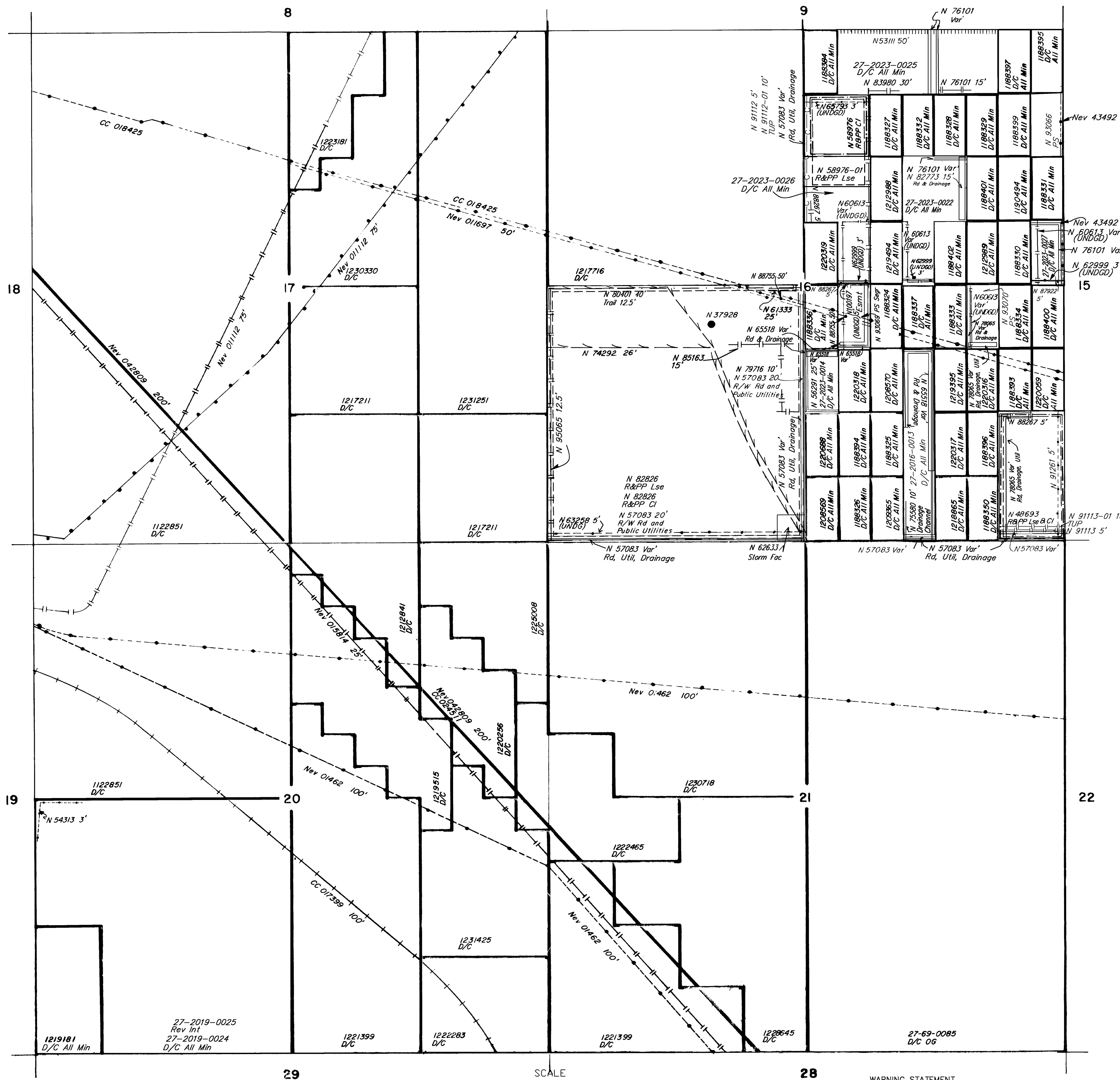


# TOWNSHIP 22 SOUTH RANGE 63 EAST OF THE MOUNT DIABLO MERIDIAN, NEVADA

CLARK COUNTY  
LAS VEGAS GR DIST

STATUS OF PUBLIC DOMAIN  
LAND AND MINERAL TITLES

MTP  
SUPPL Sec 16,17,20,21



INDEX TO SEGREGATED TRACTS				
RESURVEY	ORIGINAL SURVEY			
TRACT NO	T	R	SEC	SUBDIVISION

FOR ORDERS EFFECTING DISPOSAL OR USE OF UNIDENTIFIED LANDS WITHDRAWN FOR CLASSIFICATION, MINERALS, WATER AND/OR OTHER PUBLIC PURPOSES, REFER TO INDEX OF MISCELLANEOUS DOCUMENTS.

Nev 01112 Subject to all prior existing rights or claims  
 Nev 011697 Subject to all prior existing rights or claims  
 Min NOL W/1 Henderson City Limits  
 Secs 16,17,20,21-All  
 Certain lands in Secs 16,21 of this Tp are affected by unrecorded public dedications for roads and utilities due to previous small Tr CI. See the historical index for specific lands affected by small Tr CI.

N 82776 ROW for Road, Drainage and Utilities 50' Width Affects:  
 Sec 16: E1/2SW1/4SW1/4NE1/4, E1/2SE1/4SW1/4NE1/4,  
 E1/2SE1/4SE1/4NE1/4.

CURRENT TO	BY	CURRENT TO	BY
12/11/2023	KD		

PLAT TYPE

WARNING STATEMENT  
 This plat is the Bureau's representation of the Record of Title and should be used only as a graphic display of the township survey data. Records hereon do not reflect title changes which may have been effected by the lateral movements of rivers or other bodies of water. Refer to the cadastral surveys for official survey information.

T. 22 N  
R. 63 E  
Secs 16, 17,  
20, 21