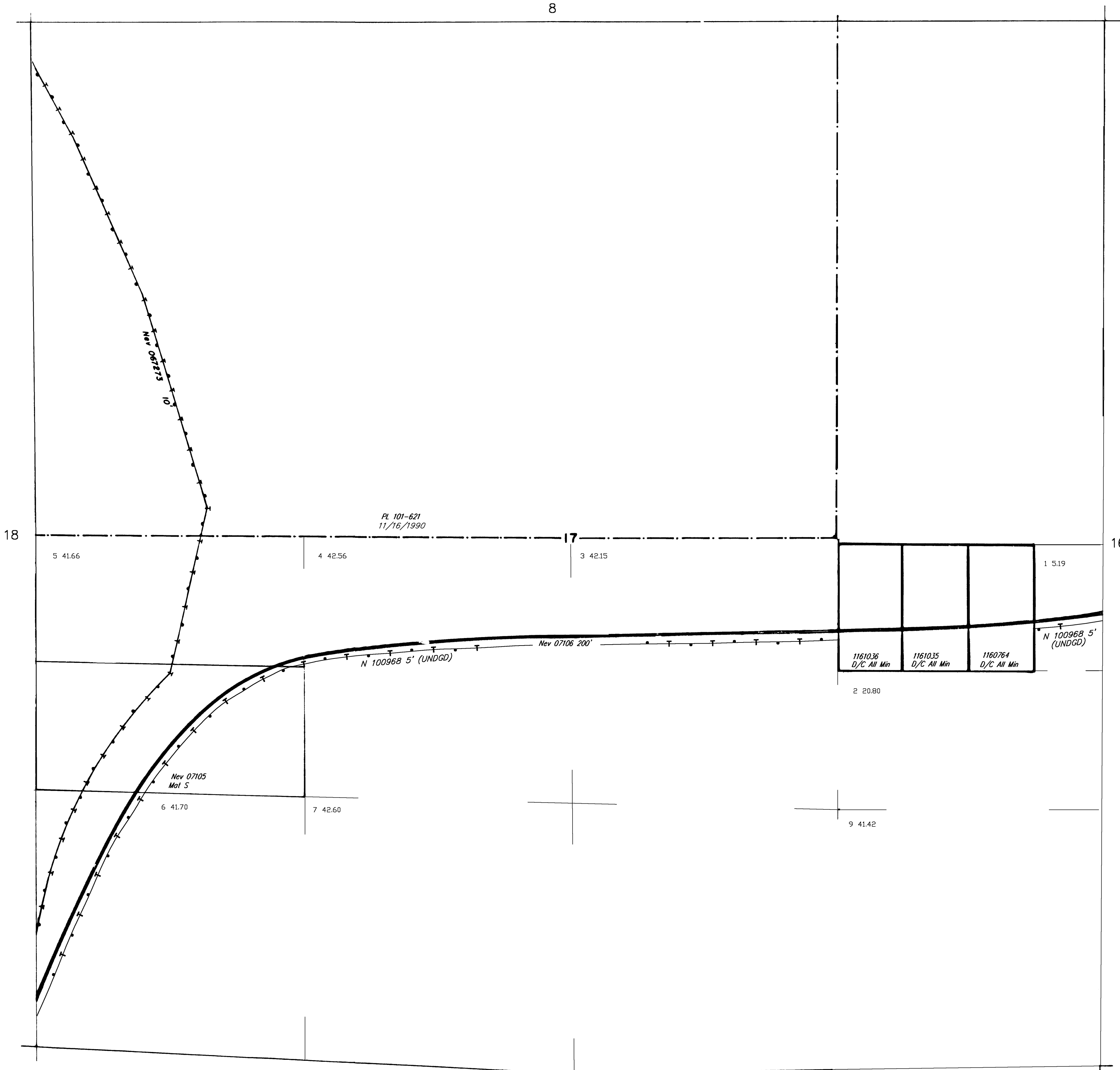


TOWNSHIP 22 SOUTH RANGE 59 EAST OF THE MOUNT DIABLO MERIDIAN, NEVADA

CLARK COUNTY
LAS VEGAS GR DIST

STATUS OF PUBLIC DOMAIN
LAND AND MINERAL TITLES
AND ACQUIRED LANDS

MT
SUPPL Sec 17



INDEX TO SEGREGATED TRACTS				
RESURVEY	ORIGINAL SURVEY			
TRACT NO	T	R	SEC	SUBDIVISION

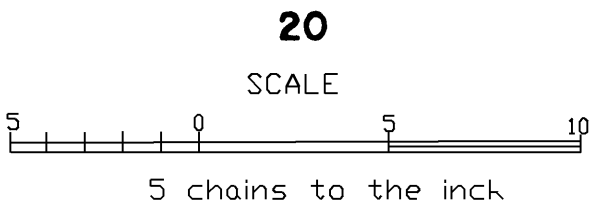
FOR ORDERS EFFECTING DISPOSAL OR USE OF UNIDENTIFIED LANDS WITHDRAWN FOR CLASSIFICATION, MINERALS, WATER AND/OR OTHER PUBLIC PURPOSES. REFER TO INDEX OF MISCELLANEOUS DOCUMENTS.

Certain lands in Sec. 17 of this township are affected by unrecorded public dedications for roads and utilities due to previous small tract classifications. See the historical index for specific lands affected by small tract classifications.

N 29925 BLM O CI Nonsuitable DLE
Sec. 16: All

CURRENT TO	BY	CURRENT TO	BY
05/17/2024	TJ		

PLAT TYPE



WARNING STATEMENT
This plat is the Bureau's representation of the Record of Title and should be used only as a graphic display of the township survey data. Records hereon do not reflect title changes which may have been effected by the lateral movements of rivers or other bodies of water. Refer to the cadastral surveys for official survey information.

T. 22 S
R. 59 E
Sec 17