

TOWNSHIP 21 SOUTH RANGE 60 EAST OF THE MOUNT DIABLO MERIDIAN, NEVADA

STATUS OF PUBLIC DOMAIN
LAND AND MINERAL TITLES

**MTP
SUPPL Sec 14,15,23**

INDEX TO SEGREGATED TRACTS				
RESURVEY	ORIGINAL SURVEY			
TRACT NO	T	R	SEC	SUBDIVISION

FOR ORDERS EFFECTING DISPOSAL OR USE OF UNIDENTIFIED LANDS WITHDRAWN FOR CLASSIFICATION, MINERALS, WATER AND/OR OTHER PUBLIC PURPOSES, REFER TO INDEX OF MISCELLANEOUS DOCUMENTS.

Certain lands in Secs 14, 23 of this Tp are affected by unrecorded public dedications for roads and utilities due to previous small tract CI. See the historical index for specific lands affected by small tract CI.

N 24659 R/W Water Pipeline 15' Affects:

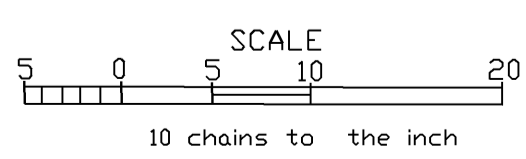
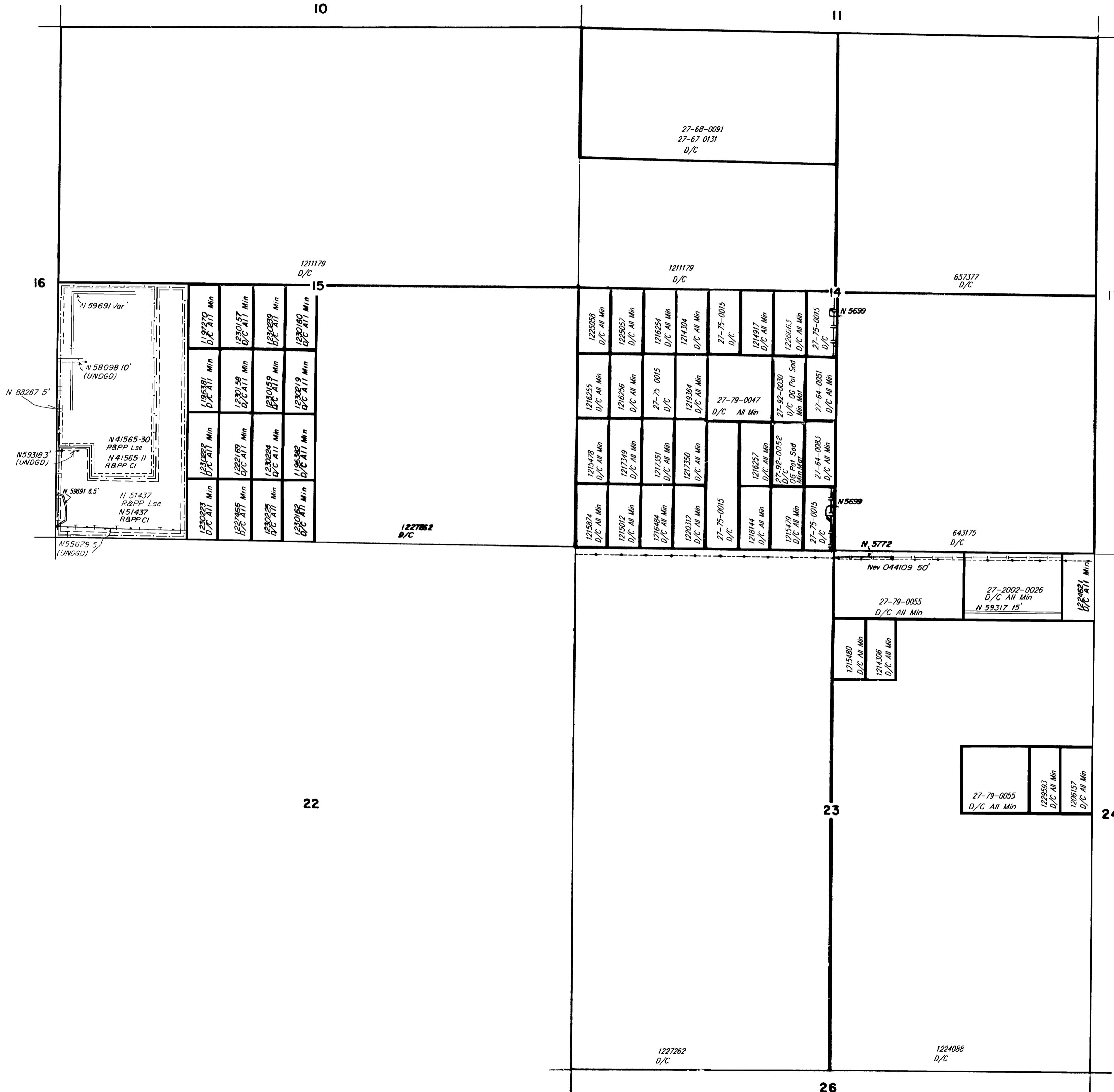
Sec 15: W1/2W1/2W1/2SW1/4, W1

N 24663 R/W Powerline & Tel Line 5'

Sec 15: W1/2W1/2W1/2SW1/4, W1

N 59691 R/W Rd Var

Sec 15: W1/2SW1/4 SW1/4, SW1/4 SW1/4, W1



WARNING STATEMENT
This plat is the Bureau's Record of Title and should be used only as a graphic display of the township survey data. Records hereon do not reflect title changes which may have been effected by lateral movements of rivers or other bodies of water. Refer to the cadastral surveys for official survey information.

CURRENT TO	BY
8/27/10	MS
12/6/13	MS
1/22/14	DMG
12/23/14	MS
08/16/2021	LAJ

N-050
MTP Suppl
Sec 14,15,23
T. 21S.
R. 60E.