

TOWNSHIP 19 SOUTH RANGE 63 EAST OF THE MOUNT DIABLO MERIDIAN, NEVADA

CLARK COUNTY
LAS VEGAS GR DIST

STATUS OF PUBLIC DOMAIN LAND AND MINERAL TITLES AND ACQUIRED LANDS

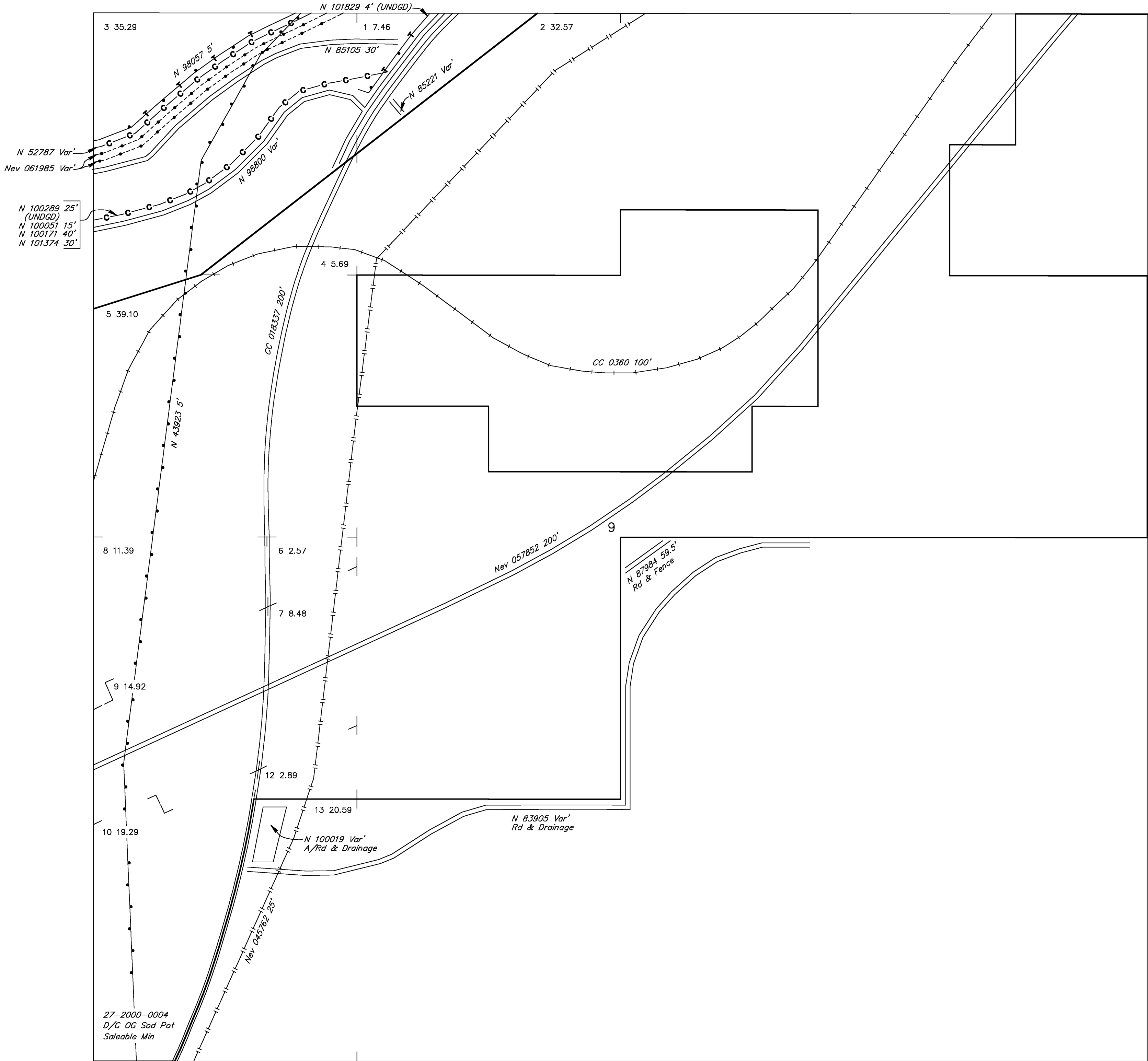
MTP SUPPL SEC 9

[illegible]

FOR ORDERS EFFECTING DISPOSAL OR USE OF
UNIDENTIFIED LANDS WITHDRAWN FOR CLASSIFICATION,
MINERALS, WATER AND/OR OTHER PUBLIC PURPOSES.
REFER TO INDEX OF MISCELLANEOUS DOCUMENTS.

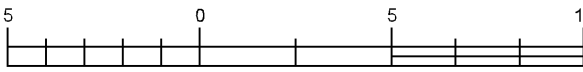
N 51809 R/W Transportation & Utility Facilities

Sec 9: W/M



WARNING STATEMENT

This plat is the Bureau's representation of the Record of Title and should be used only as a graphic display of the township survey data. Records hereon do not reflect title changes which may have been affected by the lateral movements of rivers or other bodies of water. Refer to the cadastral surveys for official survey information.



5 chains to the inch

CURRENT TO	BY	CURRENT TO	BY
02/03/2025	TJ		

PLAT TYPE

T. 19 S
R. 19 E
Sec 9

T. 19 S

R. 19 F

Sec 9