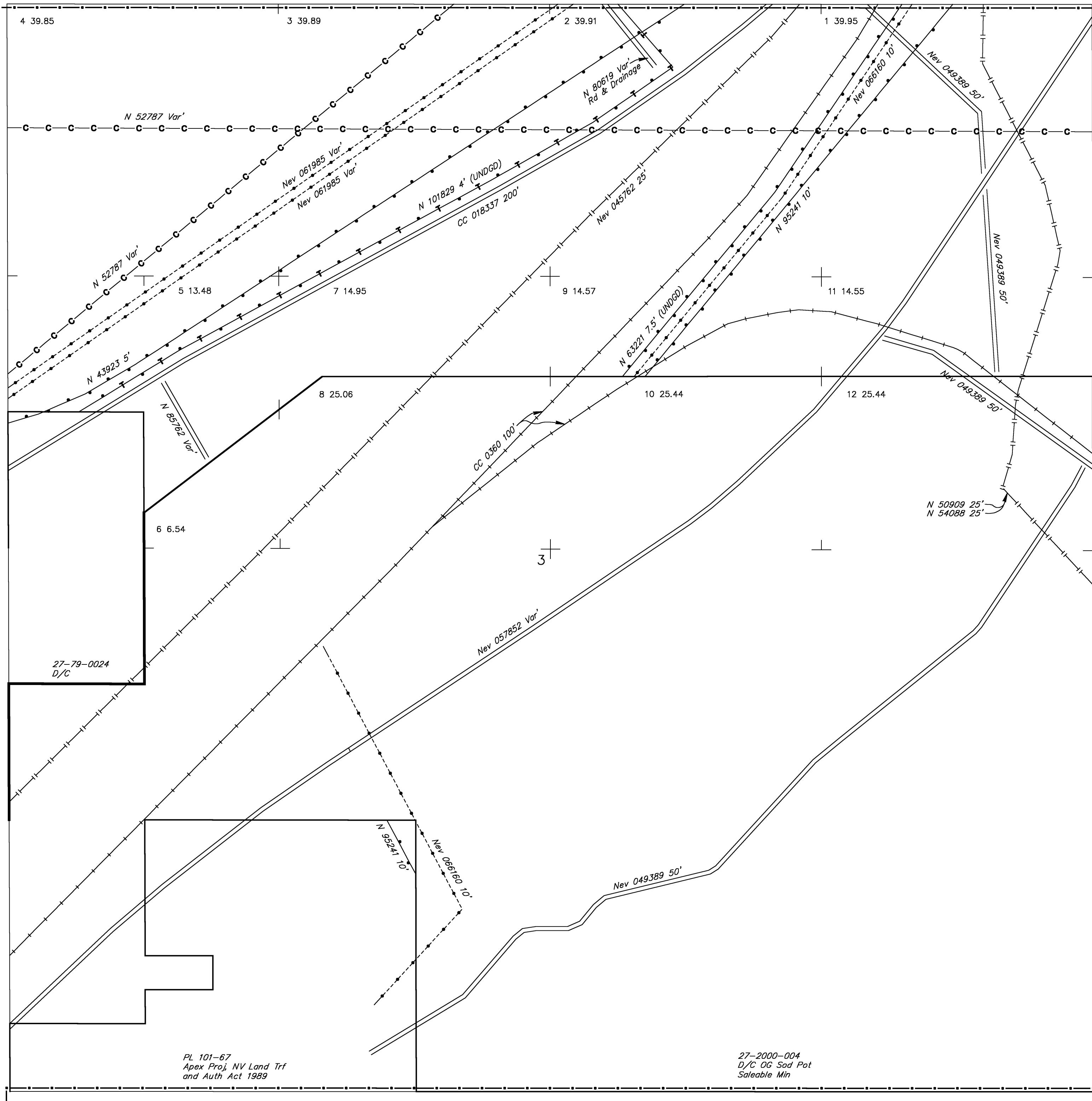


# TOWNSHIP 19 SOUTH RANGE 63 EAST OF THE MOUNT DIABLO MERIDIAN, NEVADA

CLARK COUNTY  
LAS VEGAS GR DIST

STATUS OF PUBLIC DOMAIN  
LAND AND MINERAL TITLES  
AND ACQUIRED LANDS

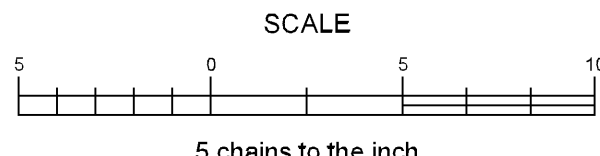
## MTP SUPPL Sec 3



INDEX TO SEGREGATED TRACTS				
RESURVEY	ORIGINAL SURVEY			SUBDIVISION
TRACT NO	T	R	SEC	

FOR ORDERS EFFECTING DISPOSAL OR USE OF UNIDENTIFIED LANDS WITHDRAWN FOR CLASSIFICATION, MINERALS, WATER AND/OR OTHER PUBLIC PURPOSES. REFER TO INDEX OF MISCELLANEOUS DOCUMENTS.

- N 51809 R/W Transportation & Utility Facilities  
Sec 3: W/1
- N 37879 R/W Power Line affects  
Sec 3: SE1/4SW1/4, W/1
- N 54042 R/W Comm S  
Sec 3: SW1/4SW1/4SE1/4SW1/4, W/1
- N 56100 R/W Powerline 3'  
Sec 3: SW1/4SW1/4SE1/4SW1/4, W/1



**WARNING STATEMENT**  
This plat is the Bureau's representation of the Record of Title and should be used only as a graphic display of the township survey data. Records hereon do not reflect title changes which may have been effected by the lateral movements of rivers or other bodies of water. Refer to the cadastral surveys for official survey information.

CURRENT TO	BY	CURRENT TO	BY
11/13/2023	ART		

PLAT TYPE