

TOWNSHIP 19 SOUTH RANGE 60 EAST OF THE MOUNT DIABLO MERIDIAN, NEVADA

LAS VEGAS GR DIST

STATUS OF PUBLIC DOMAIN
LAND AND MINERAL TITLES

MTP Suppl Sec 19

INDEX TO SEGREGATED TRACTS

RESURVEY TRACT NO	ORIGINAL SURVEY			SUBDIVISION
	T	R	SEC	

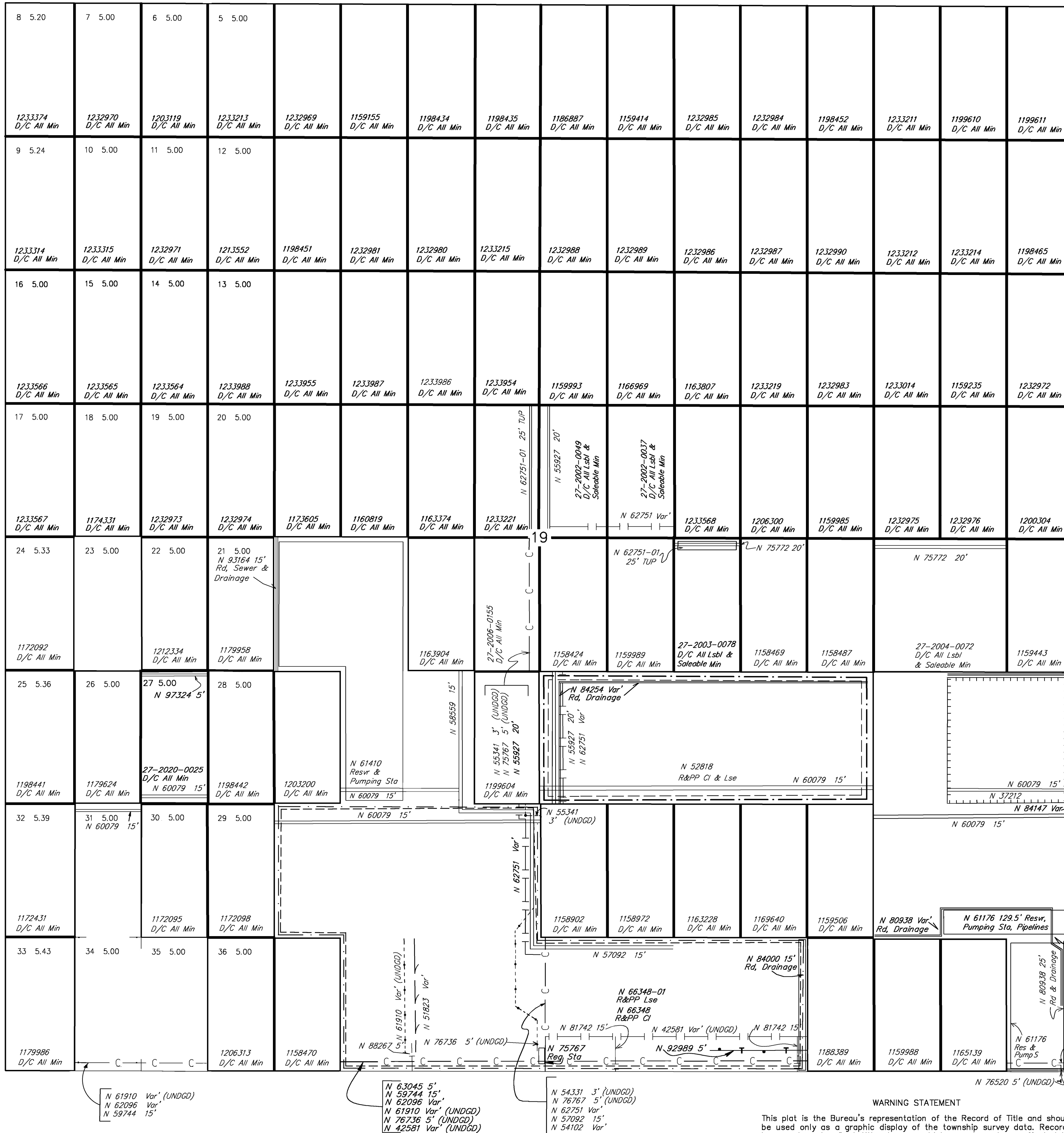
FOR ORDERS EFFECTING DISPOSAL OR USE OF UNIDENTIFIED LANDS WITHDRAWN FOR CLASSIFICATION, MINERALS, WATER AND/OR OTHER PUBLIC PURPOSES, REFER TO INDEX OF MISCELLANEOUS DOCUMENTS.

Certain lands in Sec 19, of this township are affected by unrecorded public dedications for roads & utilities due to previous small tract CI. See the historical index for specific lands affected by small tract CI.

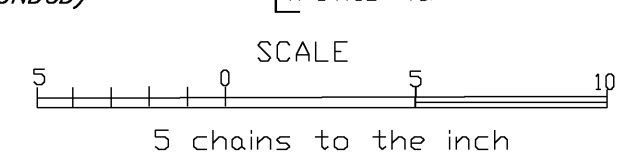
N 60476 R/W Switch Site
Sec 19: Lots 34 & 35

N 61323 R/W Rd affects Sec 19 (LV Beltway)

N 97787 Var'
Sec 19: Lot 27, ~~SE1/4NW1/4SW1/4, SW1/4NE1/4SW1/4, NW1/4SE1/4SW1/4, NE1/4SE1/4SW1/4, E1/4NW1/4SE1/4SW1/4, SE1/4NE1/4SE1/4~~



WARNING STATEMENT
This plat is the Bureau's representation of the Record of Title and should be used only as a graphic display of the township survey data. Records hereon do not reflect title changes which may have been effected by the lateral movements of rivers or other bodies of water. Refer to the cadastral surveys for official survey information.



CURRENT TO	BY	CURRENT TO	BY
2/2/15	MS		
6/18/15	SAL		
7/25/19	FC		
5/18/20	FC		
08/10/2021	SAL		

N 88265 5'
N 81412 5'
N 79265 5' (UNDGD)
N 76520 5' (UNDGD)
N 61329 Var'
N 62096 Var'
N 59744 15'
N 42581 Var' (UNDGD)
N 92989 5'