

TOWNSHIP 18 SOUTH RANGE 67 EAST OF THE MOUNT DIABLO MERIDIAN, NEVADA

CLARK COUNTY
LAS VEGAS GR DIST

STATUS OF PUBLIC DOMAIN
LAND AND MINERAL TITLES

MT PLAT

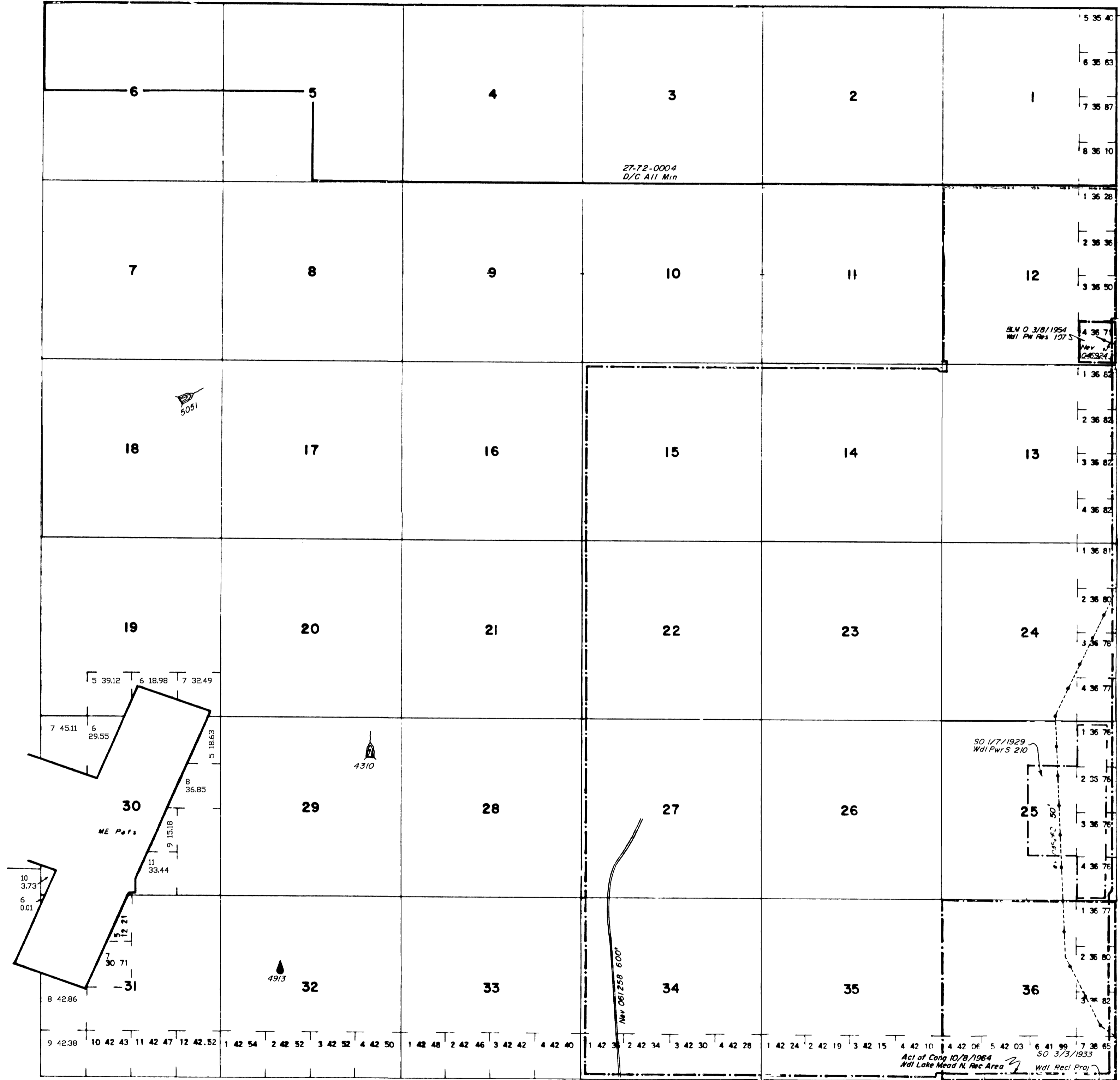
INDEX TO SEGREGATED TRACTS					
RESURVEY	ORIGINAL SURVEY				
	TRACT NO	T	R	SEC	SUBDIVISION

FOR ORDERS EFFECTING DISPOSAL OR USE OF UNIDENTIFIED LANDS WITHDRAWN FOR CLASSIFICATION, MINERALS, WATER AND/OR OTHER PUBLIC PURPOSES, REFER TO INDEX OF MISCELLANEOUS DOCUMENTS.

Nev 050427 P/W Access Rd affects all lands lying within 500' of center line Specs 14, 15, 22, 23, 26, 27, 34, 35

CURRENT TO	BY
DLG/STW	
5-12-13	
5/16/13	DMG

Lat 36°19'02"N
Long 114°26'33"W



N-050
T 18S
R. 67E