

# TOWNSHIP 18 SOUTH RANGE 63 EAST OF THE MOUNT DIABLO MERIDIAN, NEVADA

CLARK COUNTY  
LAS VEGAS GR DIST

STATUS OF PUBLIC DOMAIN  
LAND AND MINERAL TITLES  
AND ACQUIRED LANDS

## MT PLAT

INDEX TO SEGREGATED TRACTS				
RESURVEY TRACT NO	ORIGINAL SURVEY			
	T	R	SEC	SUBDIVISION

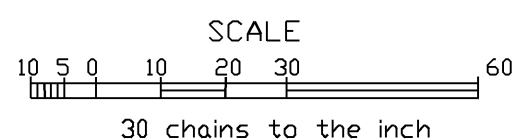
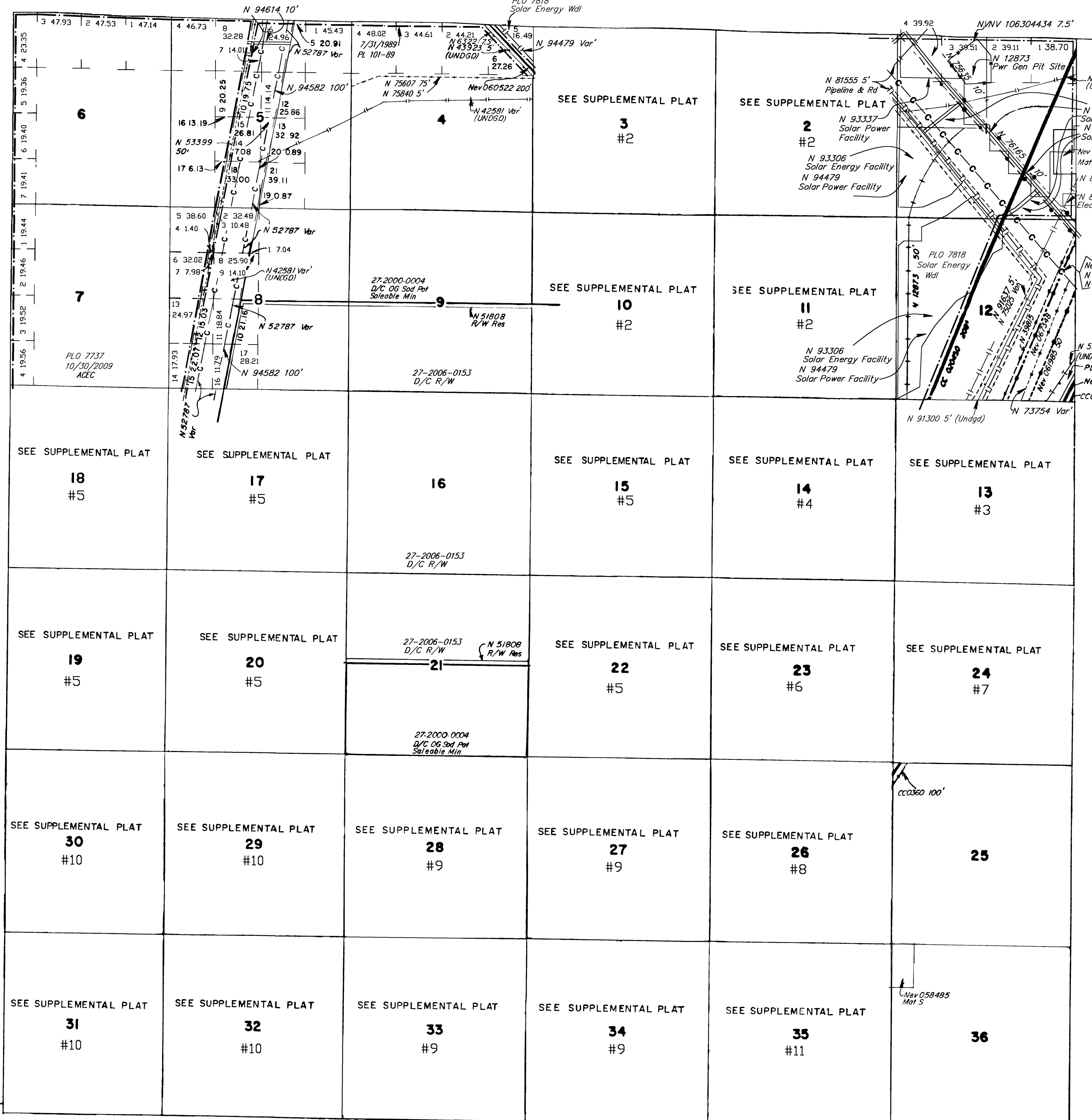
FOR ORDERS EFFECTING DISPOSAL OR USE OF  
UNIDENTIFIED LANDS WITHDRAWN FOR CLASSIFICATION,  
MINERALS, WATER AND/OR OTHER PUBLIC PURPOSES.  
REFER TO INDEX OF MISCELLANEOUS DOCUMENTS.

N 51809 R/W Transportation & Utility Facilities  
Secs 10,11,14,22,23,26-31,34,35: W/1

N 52787 R/W Corridors are reserved to the U.S. pursuant to  
Sec. 5 of the Act of 7-31-1989.

N 57796 Min Pot Apln  
Sec 34: E1/2W1/2SE1/4NE1/4, E1/2SE1/4NE1/4,  
SE1/4NE1/4NE1/4, N1/2NE1/4NE1/4SE1/4,  
N1/2NW1/4NW1/4SE1/4, E1/2SW1/4NE1/4NE1/4  
Sec 35: SW1/4NW1/4NW1/4, NW1/4SW1/4NW1/4

N 51991 R/W Ambient Air Quality Site  
Sec 14: NE1/4NW1/4NE1/4, W/1



WARNING STATEMENT  
This plat is the Bureau's representation of the Record of Title and should be used only as a graphic display of the township survey data. Records hereon do not reflect title changes which may have been effected by the lateral movements of rivers or other bodies of water. Refer to the cadastral surveys for official survey information.

LAT. 36° 10' N  
LONG. 114° 54' 30" W

T. 18 S  
R. 63 E  
# 1

CURRENT TO	BY	CURRENT TO	BY
03/07/2024	LAI		

PLAT TYPE