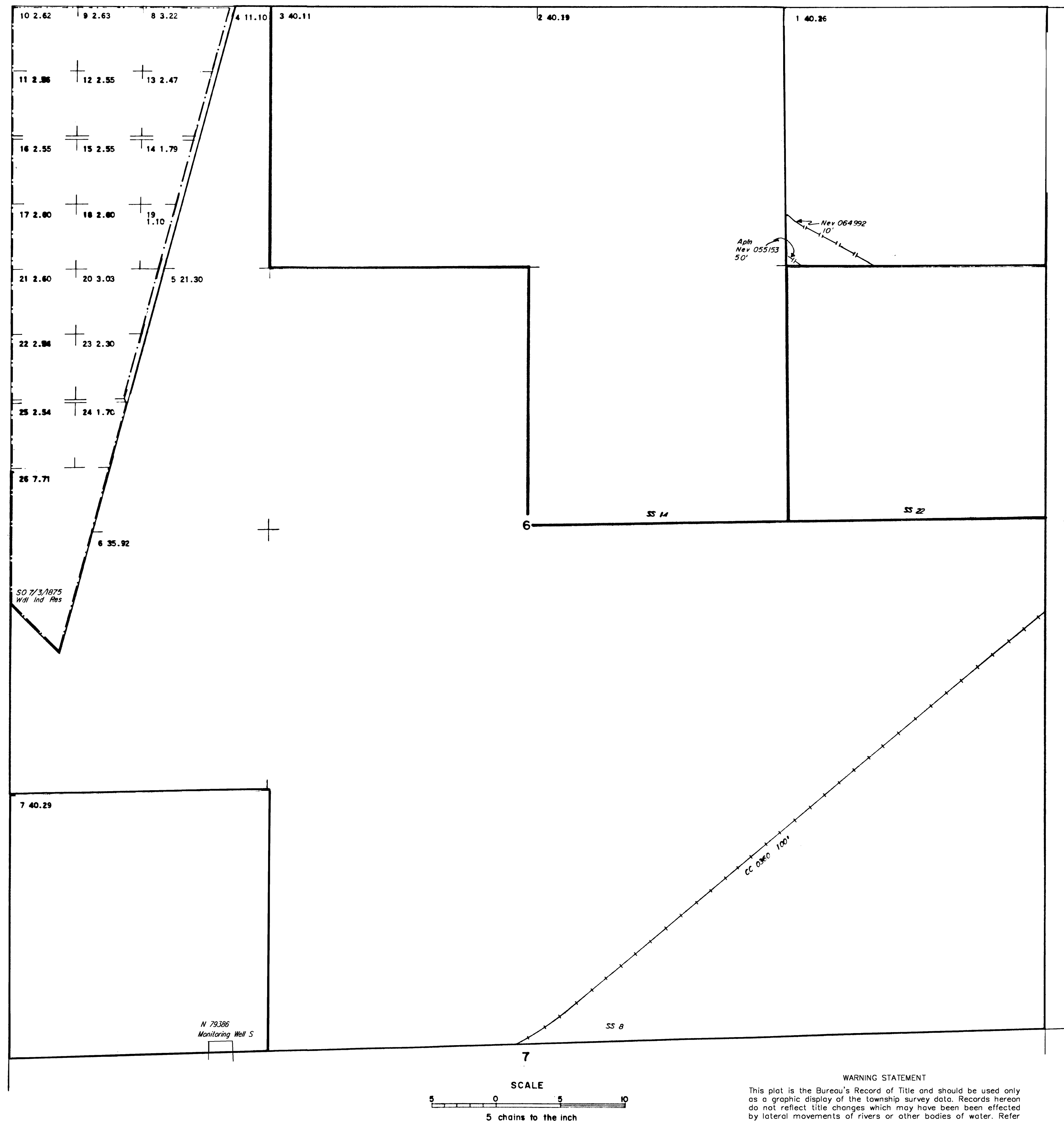


CLARK COUNTY LAS VEGAS GR DIST

MTP
SUPPL Sec 6

[illegible]

FOR ORDERS EFFECTING DISPOSAL OR USE OF
UNIDENTIFIED LANDS WITHDRAWN FOR CLASSIFICATION,
MINERALS, WATER AND/OR OTHER PUBLIC PURPOSES,
REFER TO INDEX OF MISCELLANEOUS DOCUMENTS.

[illegible]

T. 15 S
R. 66 E