

LINCOLN COUNTY
ELY GR DIST

OG PLAT

[illegible]

FOR ORDERS EFFECTING DISPOSAL OR USE OF
UNIDENTIFIED LANDS WITHDRAWN FOR CLASSIFICATION,
MINERALS, WATER AND/OR OTHER PUBLIC PURPOSES,
REFER TO INDEX OF MISCELLANEOUS DOCUMENTS.

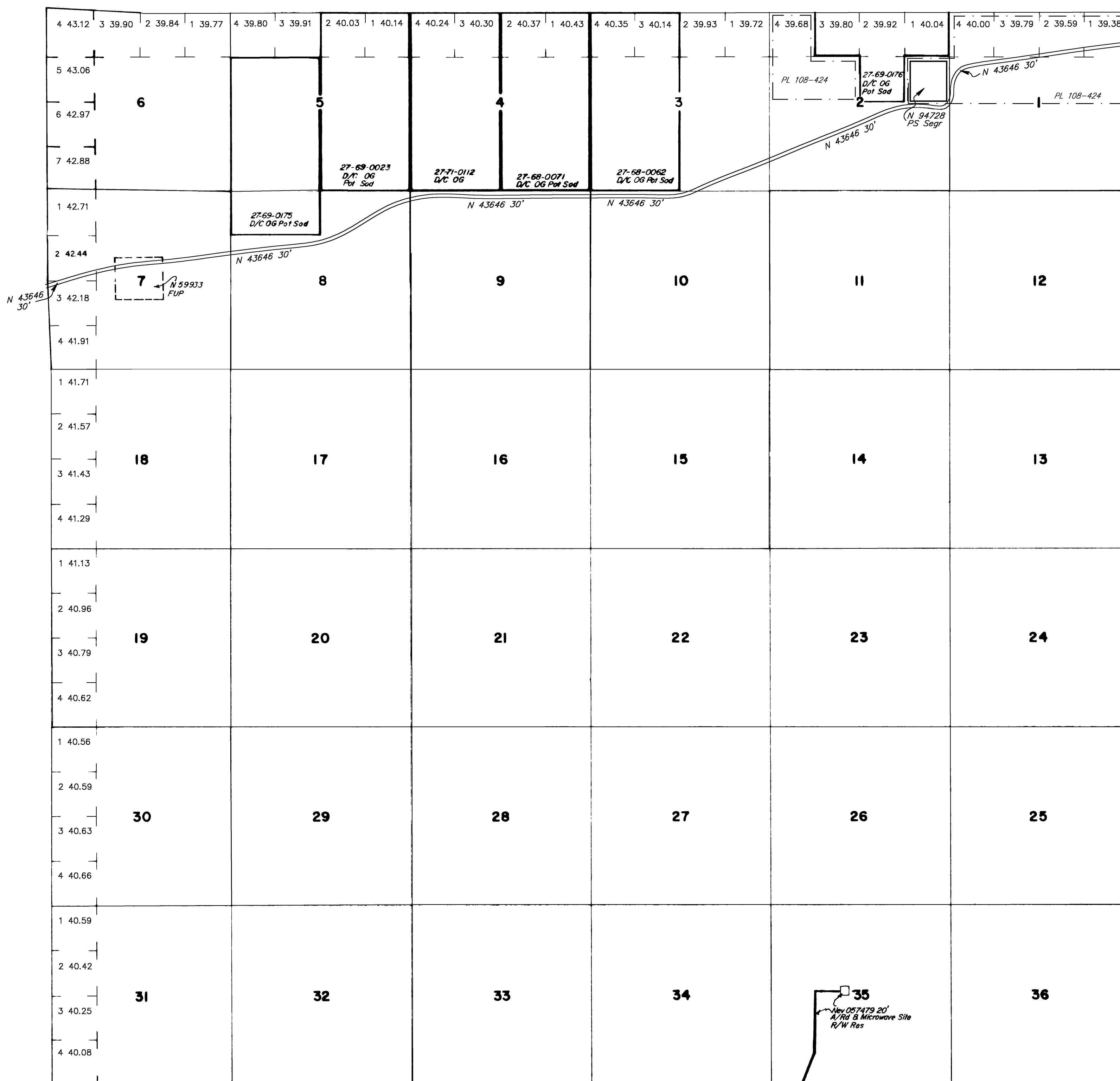


Diagram of a 30-chain scale. The scale is marked from 0 to 60 in increments of 10. Below the scale, it says "30 chains to the inch".

WARNING STATEMENT

This plat is the Bureau's representation of the Record of Title and should be used only as a graphic display of the township survey data. Records hereon do not reflect title changes which may have been effected by the lateral movements of rivers or other bodies of water. Refer to the cadastral surveys for official survey information.

CURRENT TO	BY	CURRENT TO	BY
03/29/2023	TJ		

PLAT TYPE

T. 04 S
R. 55 E