

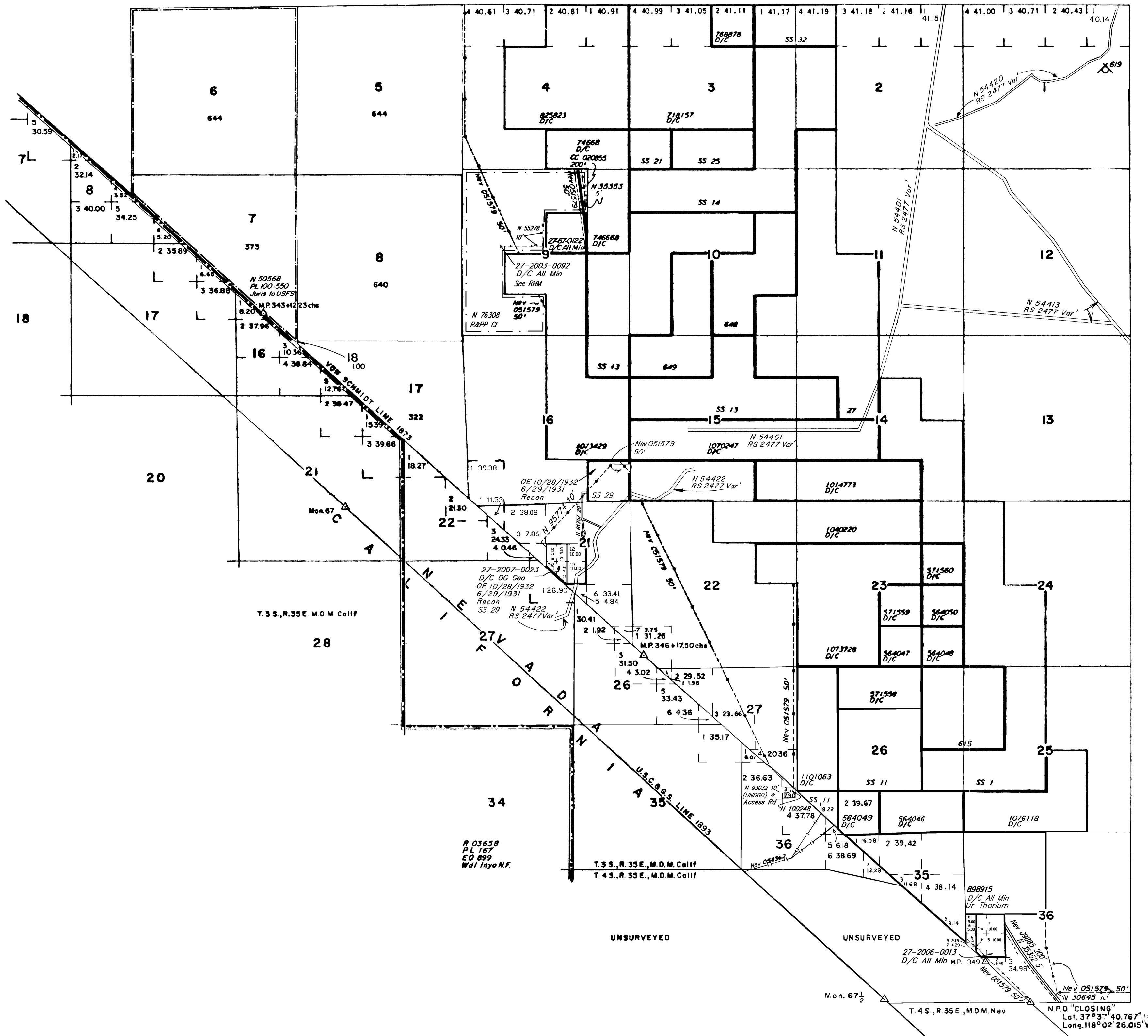
PARTIALLY SURVEYED TOWNSHIP 3 SOUTH RANGE 35 EAST OF THE MOUNT DIABLO MERIDIAN, NEVADA

PROTRACTION DIAGRAM NO. 243

ESMERALDA COUNTY  
BATTLE MTN GR DIST

STATUS OF PUBLIC DOMAIN  
LAND AND MINERAL TITLES

MT PLAT



INDEX TO SEGREGATED TRACTS				
RESURVEY TRACT NO.	ORIGINAL SURVEY			
	T	R	SEC	SUBDIVISION

FOR ORDERS EFFECTING DISPOSAL OR USE OF UNIDENTIFIED LANDS WITHDRAWN FOR CLASSIFICATION, MINERALS, WATER AND/OR OTHER PUBLIC PURPOSES, REFER TO INDEX OF MISCELLANEOUS DOCUMENTS.

NOTE: Calif survey data for T.3S., R.35E. d  
Nev survey data for T.3S., R.35E., M.D.M. Nev indicate  
M.P. 343+12.23 chs., M.P. 346+17.50 chs., M.P. 349. & Mon.  
67, 67 1/2 are common

R 03658 Determination P.L. 167 (Act of Cong 7/23/1955)  
complete 8/21/1963 All N.F. surface management by USFS

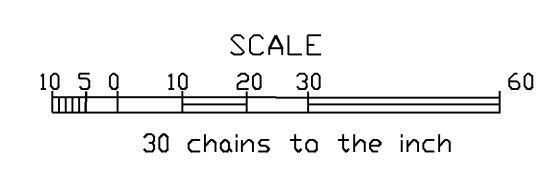
N 061193 Determination P.L. 167 (Act of Cong 7/23/1955)  
complete 12/4/1965 All N.F. surface management by USFS

NOTE Full jurisdiction of lands between Von Schmidt and the  
U.S.C & G.S. Line accepted by Nev., Ltr Aug 30, 1968  
File 1813.1-4a

Patent 27-2003-0092 Affects:  
Sec 9: E1/2SE1/4SE1/4NW1/4, E1/2NE1/4SE1/4NW1/4,  
E1/2SE1/4NE1/4SE1/4NW1/4, E1/2NE1/4NE1/4SE1/4NW1/4,  
SE1/4SE1/4SE1/4NE1/4, S1/2SW1/4SW1/4NW1/4NE1/4,  
S1/2SE1/4SW1/4NW1/4NE1/4, S1/2SW1/4SE1/4NW1/4NE1/4.

BLM Q. CL. Unstable DLE/Corr Act/1A  
Fish Lake Valley Hydrographic Basin  
All Public Lands

CURRENT TO	BY	CURRENT TO	BY
3/29/07	MS		
12/1/09	MS		
8/19/11	MS		
6/26/14	MS		
4/29/20	DMG		
02/18/2022	SAL		



WARNING STATEMENT  
This plat is the Bureau's representation of the Record of Title and should be used only as a graphic display of the township survey data. Records hereon do not reflect title changes which may have been effected by the lateral movements of rivers or other bodies of water. Refer to the cadastral surveys for official survey information.

N-060  
T. 3 S  
R. 35 E