

STATUS OF PUBLIC DOMAIN LAND AND MINERAL TITLES

[illegible]

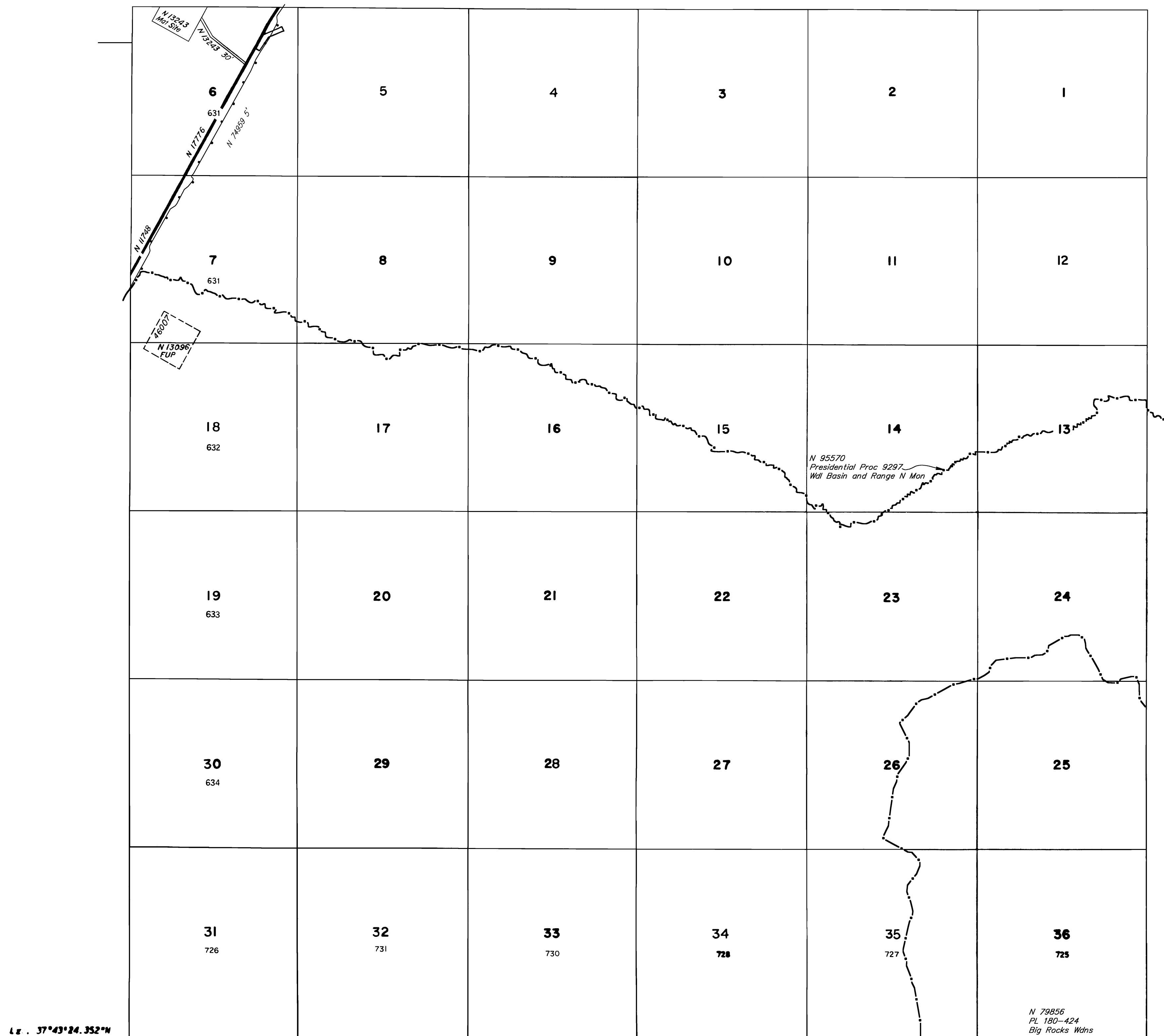
FOR ORDERS EFFECTING DISPOSAL OR USE OF
UNIDENTIFIED LANDS WITHDRAWN FOR CLASSIFICATION,
MINERALS, WATER AND/OR OTHER PUBLIC PURPOSES.
REFER TO INDEX OF MISCELLANEOUS DOCUMENTS.

This image shows a single sheet of white paper with horizontal blue or grey ruling lines. The lines are evenly spaced and run across the width of the page. There are no margins, text, or other markings on the paper.

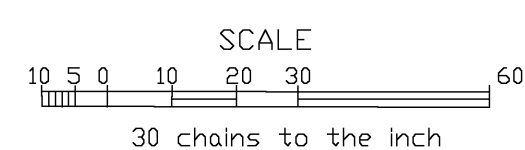
CURRENT TO	BY	CURRENT TO	BY
09/12/2023	LAL		

PLAT TYPE

N-040
N-050
T. 2 S
R. 62 E



Lg. 37°43'24.352"W
 Lt 12. 115°04'50.459"W



WARNING STATEMENT

This plat is the Bureau's representation of the Record of Title and should be used only as a graphic display of the township survey data. Records hereon do not reflect title changes which may have been effected by the lateral movements of rivers or other bodies of water. Refer to the cadastral surveys for official survey information.