

TOWNSHIP 44 NORTH RANGE 24 1/2 EAST OF THE MOUNT DIABLO MERIDIAN, NEVADA

HUMBOLDT COUNTY
SUSANVILLE GR DIST

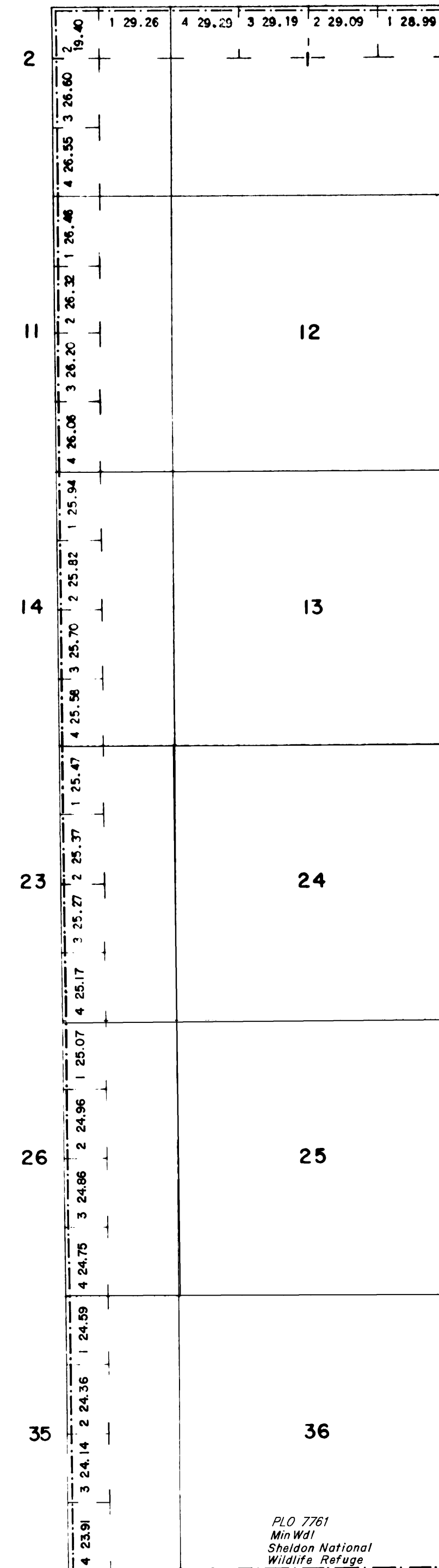
STATUS OF PUBLIC DOMAIN
LAND AND MINERAL TITLES

MT PLAT

INDEX TO SEGREGATED TRACTS				
RESURVEY		ORIGINAL SURVEY		
TRACT NO	T	R	SEC	SUBDIVISION

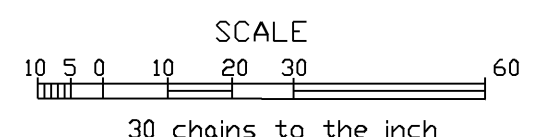
FOR ORDERS EFFECTING DISPOSAL OR USE OF UNIDENTIFIED LANDS WITHDRAWN FOR CLASSIFICATION, MINERALS, WATER AND/OR OTHER PUBLIC PURPOSES, REFER TO INDEX OF MISCELLANEOUS DOCUMENTS.

All TP included in Surface Wdl Charles Sheldon Antelope R EO 7522 12/12/1936; Chgd to Sheldon National Wildlife Refuge, P.L.O 5634 5/5/1978



P.L.O 7761
Min Wdl
Sheldon National
Wildlife Refuge

Lat. 41°40'N
Long. 119°13'W



WARNING STATEMENT

This plat is the Bureau's representation of the Record of Title and should be used only as a graphic display of the township survey data. Records hereon do not reflect title changes which may have been effected by the lateral movements of rivers or other bodies of water. Refer to the cadastral surveys for official survey information.

CURRENT TO	BY
7/24/92	LK
5/11/11	MS
2/19/20	ART

C-020
T. 44N
R. 24 1/2E