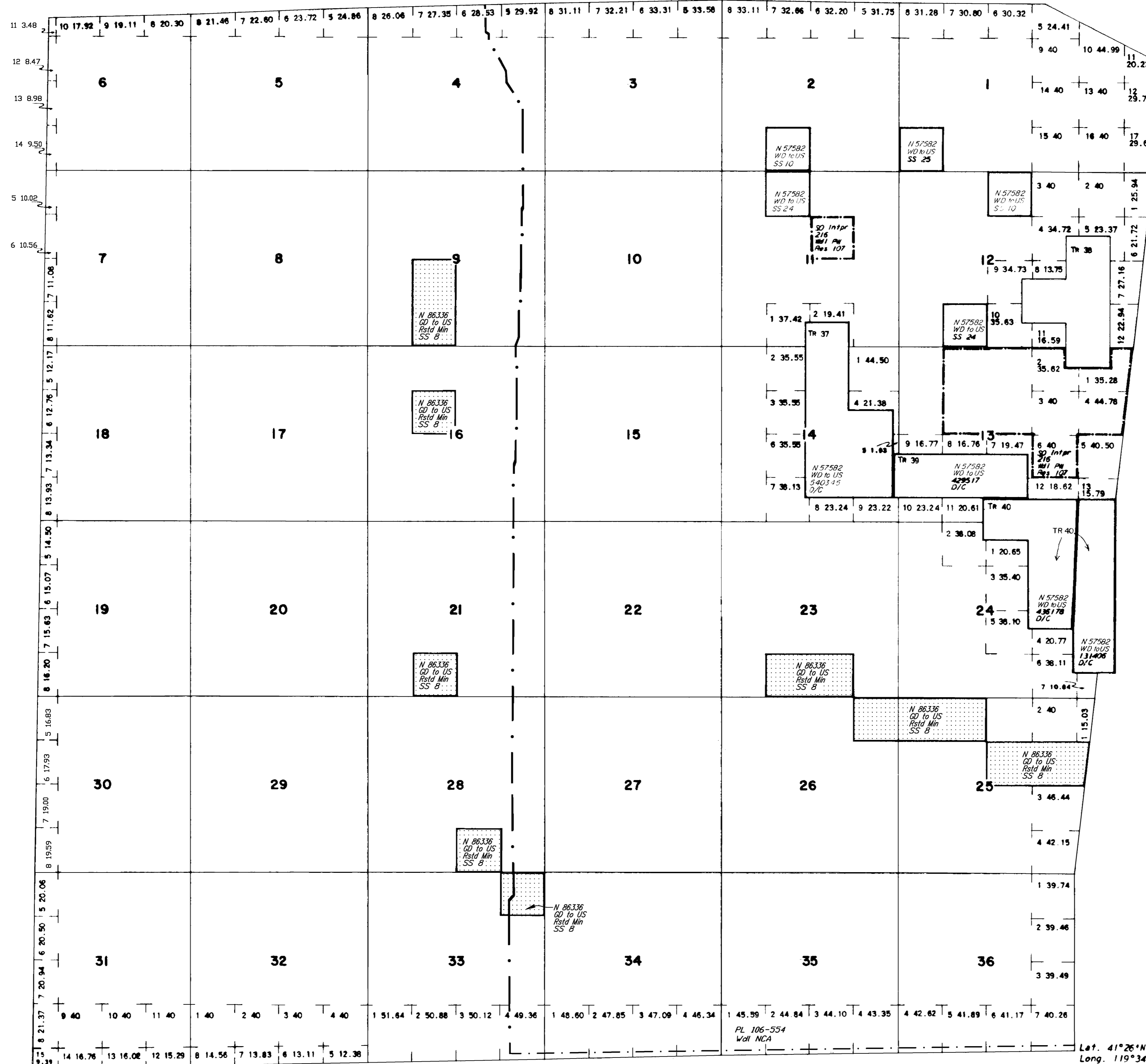


TOWNSHIP 41 NORTH RANGE 21 EAST OF THE MOUNT DIABLO MERIDIAN, NEVADA

WASHOE COUNTY
SUSANVILLE GR DIST

STATUS OF PUBLIC DOMAIN
LAND AND MINERAL TITLES

MT PLAT



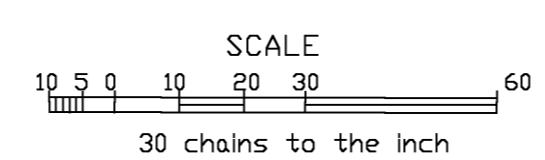
INDEX TO SEGREGATED TRACTS				
RESURVEY	ORIGINAL SURVEY			
TRACT NO	T	R	SEC	SUBDIVISION
37	41N	21E	10	SE 1/4
	41N	21E	15	E 1/2 NE 1/4
38	41N	21E	14	SW 1/4 NW 1/4
	41N	21E	12	W 1/2 NE 1/4 SE 1/4
39	41N	21E	14	N 1/2 NE 1/4
	41N	21E	14	SE 1/4
40	41N	21E	13	S 1/4
	41N	21E	24	NW 1/4 NE 1/4

INDEX TO APPROPRIATED SUBDIVISIONS								
RESURVEY			ORIGINAL SURVEY					
STATUS	T	R	SEC	SUBDIV	T	R	SEC	SUBDIV
SS 25	41N	21E	1	SW 1/4	41N	21E	2	SE 1/4
SS 10	41N	21E	2	SE 1/4	41N	21E	3	SW 1/4
SS 24	41N	21E	11	NE 1/4	41N	21E	11	NE 1/4
	41N	21E	12	SE 1/4	41N	21E	11	SW 1/4
SS 8	41N	21E	9	E 1/4	41N	21E	9	E 1/4
	41N	21E	16	SE 1/4	41N	21E	16	SE 1/4
	41N	22E	18	LOTS 1, 2	41N	21E	13	N 1/2
	41N	21E	21	SE 1/4	41N	21E	21	SE 1/4
	41N	21E	23	SE 1/4	41N	21E	23	SE 1/4
	41N	21E	23	SW 1/4	41N	21E	23	SW 1/4
	41N	21E	25	N 1/4	41N	21E	25	N 1/4
	41N	21E	25	S 1/4	41N	21E	25	S 1/4
	41N	21E	26	NE 1/4	41N	21E	26	NE 1/4
	41N	21E	28	SW 1/4	41N	21E	28	SW 1/4
	41N	21E	33	NE 1/4	41N	21E	33	NE 1/4

FOR ORDERS EFFECTING DISPOSAL OR USE OF
UNIDENTIFIED LANDS WITHDRAWN FOR CLASSIFICATION
MINERALS, WATER AND/OR OTHER PUBLIC PURPOSES
REFER TO INDEX OF MISCELLANEOUS DOCUMENTS.

PL 106-554 Black Rock Desert - High Rock Canyon
Emigrant Trails NCA: N 74460

CURRENT TO	BY	CURRENT TO	BY
12/13/2023	ART		



WARNING STATEMENT
This plat is the Bureau's representation of the Record of Title and should be used only as a graphic display of the township survey data. Records hereon do not reflect title changes which may have been effected by the lateral movements of rivers or other bodies of water. Refer to the cadastral surveys for official survey information.

C-020
PLAT TYPE
T. 41 N.
R. 21 E.