

TOWNSHIP 40 NORTH RANGE 35 EAST OF THE MOUNT DIABLO MERIDIAN, NEVADA

HUMBOLDT COUNTY
WINNEMUCCA GR DIST

STATUS OF PUBLIC DOMAIN
LAND AND MINERAL TITLES

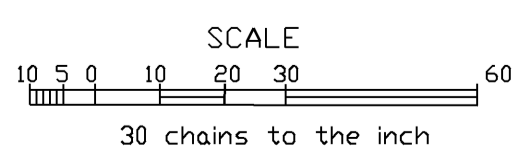
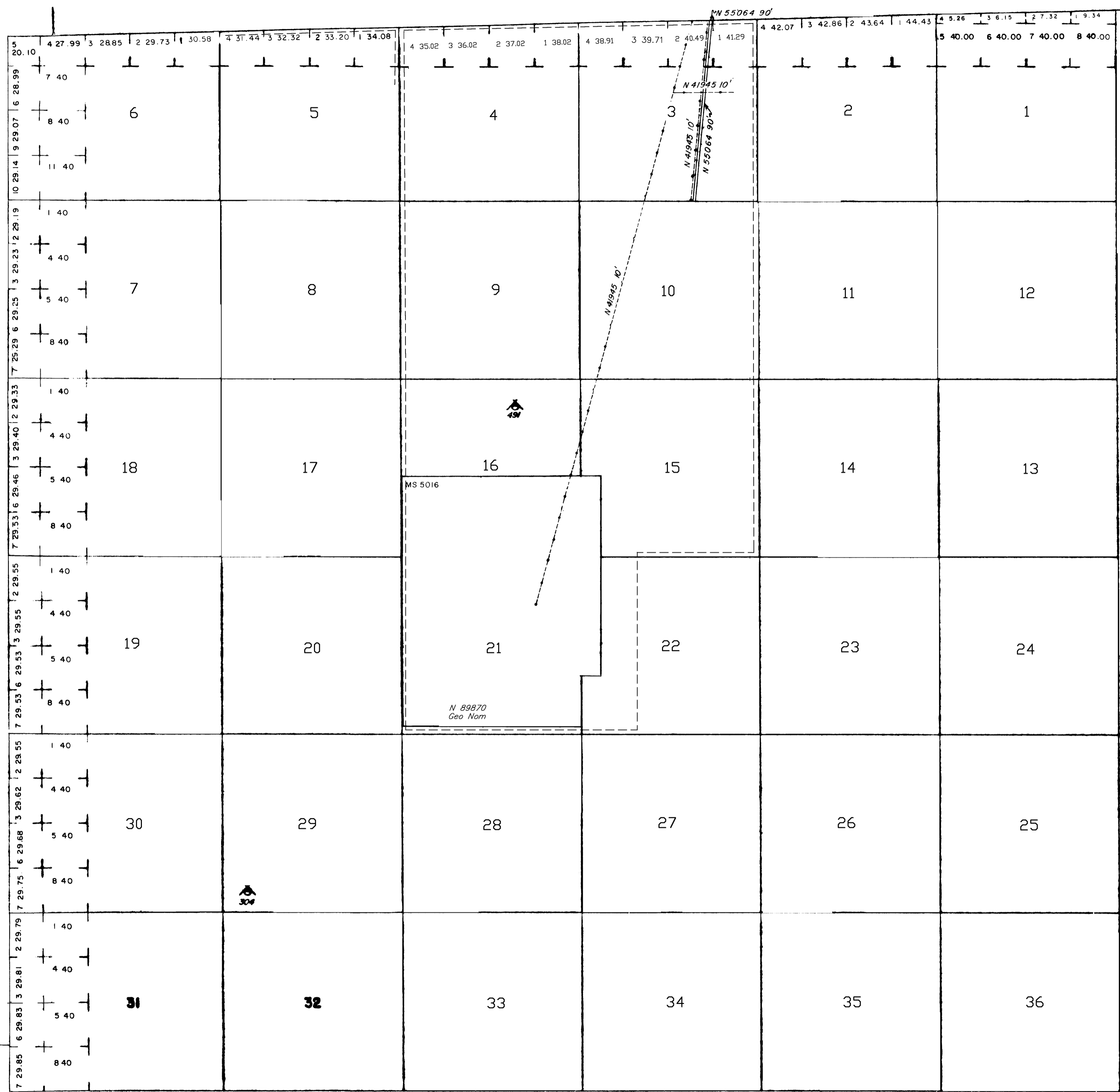
GEO PLAT

INDEX TO SEGREGATED TRACTS				
RESURVEY		ORIGINAL SURVEY		
TRACT NO	T	R	SEC	SUBDIVISION

FOR ORDERS EFFECTING DISPOSAL OR USE OF UNIDENTIFIED LANDS WITHDRAWN FOR CLASSIFICATION, MINERALS, WATER AND/OR OTHER PUBLIC PURPOSES, REFER TO INDEX OF MISCELLANEOUS DOCUMENTS.

CURRENT TO	BY
3/1/05	MS
9/13/11	MS
10/26/11	MS
5/28/13	MS
6/6/13	MS
1/29/14	MS

N-020
T. 40N
R. 35E



WARNING STATEMENT
This plat is the Bureau's Record of Title and should be used only as a graphic display of the township survey data. Records hereon do not reflect title changes which may have been effected by lateral movements of rivers or other bodies of water. Refer to the cadastral surveys for official survey information.

Lat. 41°15'47" N
Long. 117°59' W