

# PARTIALLY SURVEYED TOWNSHIP 40 NORTH RANGE 25 EAST OF THE MOUNT DIABLO MERIDIAN, NEVADA

PROTRACTION DIAGRAM NO. 260

HUMBOLDT COUNTY

WINNEMUCCA GR DIST

STATUS OF PUBLIC DOMAIN  
LAND AND MINERAL TITLES

## MT PLAT

PL 106-554  
Wdlt NCA  
PL 106-554  
Wdlt Wdms

INDEX TO SEGREGATED TRACTS				
RESURVEY TRACT NO	ORIGINAL SURVEY			
	T	R	SEC	SUBDIVISION

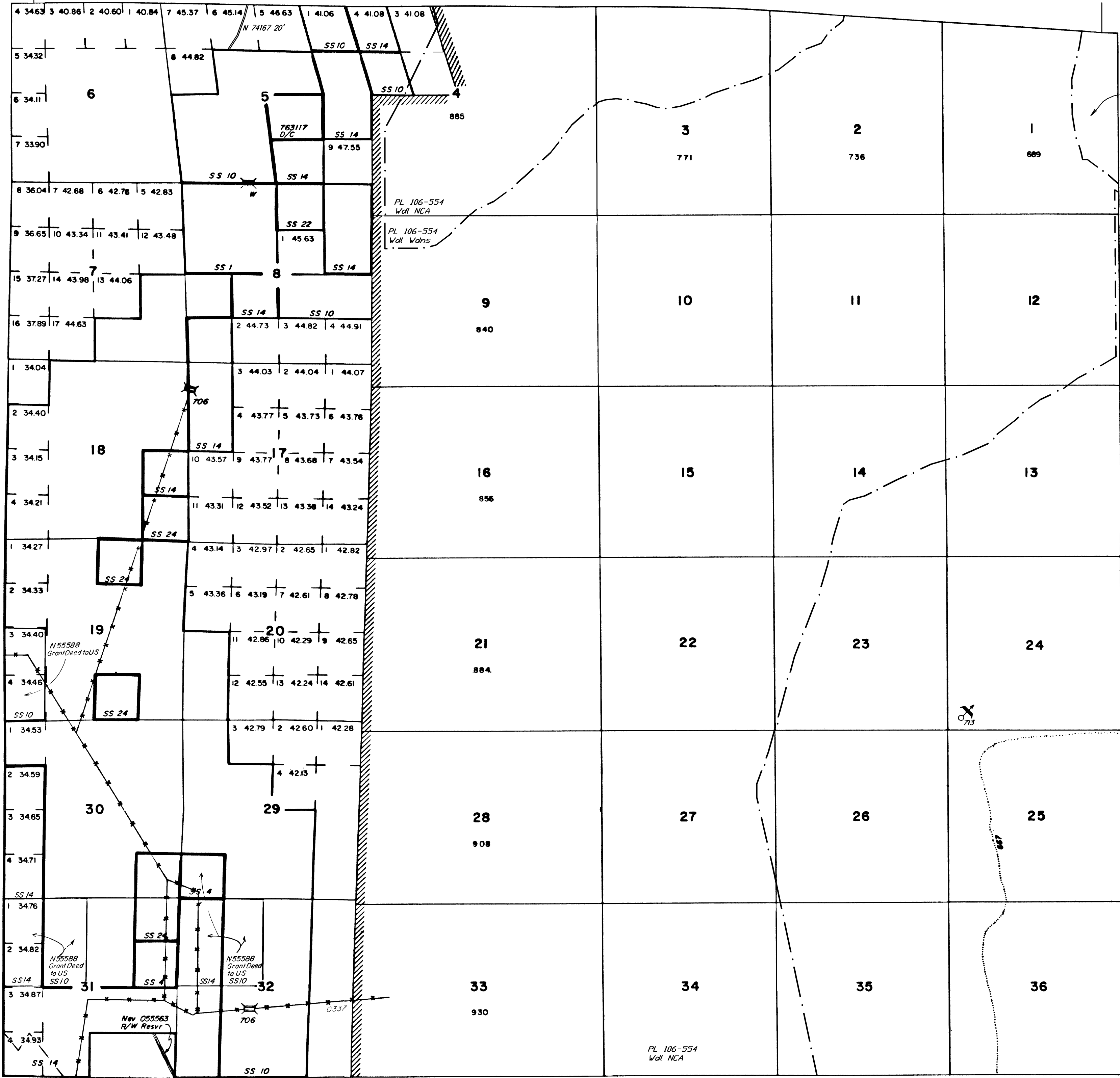
FOR ORDERS EFFECTING DISPOSAL OR USE OF UNIDENTIFIED LANDS WITHDRAWN FOR CLASSIFICATION, MINERALS, WATER AND/OR OTHER PUBLIC PURPOSES, REFER TO INDEX OF MISCELLANEOUS DOCUMENTS.

- N 55590 Asgn of Conservation Esmt to US
- Sec 4 Lot 4, SW1/4 NW1/4
- Sec 5: SE1/4 NW1/4, N1/2 SE1/4, SW1/4
- Sec 7: NE1/4 SE1/4, SW2 SE1/4
- Sec 8: E1/2 NE1/4, NW1/4 NE1/4, NW1/4 NW1/4, SW2 NW1/4, NW2 SW2, SW1/4 SW1/4
- Sec 17: W1/2 NW1/4
- Sec 18: Lots 2, 3, 4, E1/2 W1/2, E1/2
- Sec 19: Lots 1, 2, E1/2 W1/2, E1/2
- Sec 20: W1/2 SW1/4
- Sec 29: NW1/4 NW1/4, SW2 NW1/4, N1/2 SW1/4, SE1/4 SW1/4, W1/2 SE1/4
- Sec 30: Lots 1, 2, 3, 4, E1/2 W1/2, E1/2
- Sec 31: Lots 3, 4, E1/2 SW1/4, NE1/4, NW2 SE1/4
- Sec 32: W1/2 E1/2, SW1/4

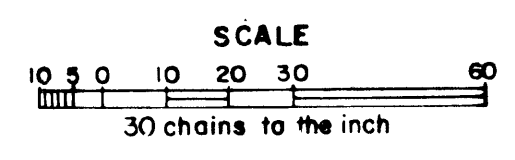
PL 106-554 North Black Rock Range Wdms: N 74463

PL 106-554 Black Rock Desert - High Rock Canyon  
Emigrant Trails NCA: N 74460

CURRENT TO	BY
10/9/03	MS
12/31/2003	SL
8/22/06	MS



Lat. 41° 20' N  
Long. 119° 11' W



**WARNING STATEMENT**  
This plat is the Bureau's Record of Title, and should be used only as a graphic display of the township survey data. Records hereon do not reflect title changes which may have been effected by lateral movements of rivers or other bodies of water. Refer to the cadastral surveys for official survey information.

N-020  
T. 40N  
R. 25E