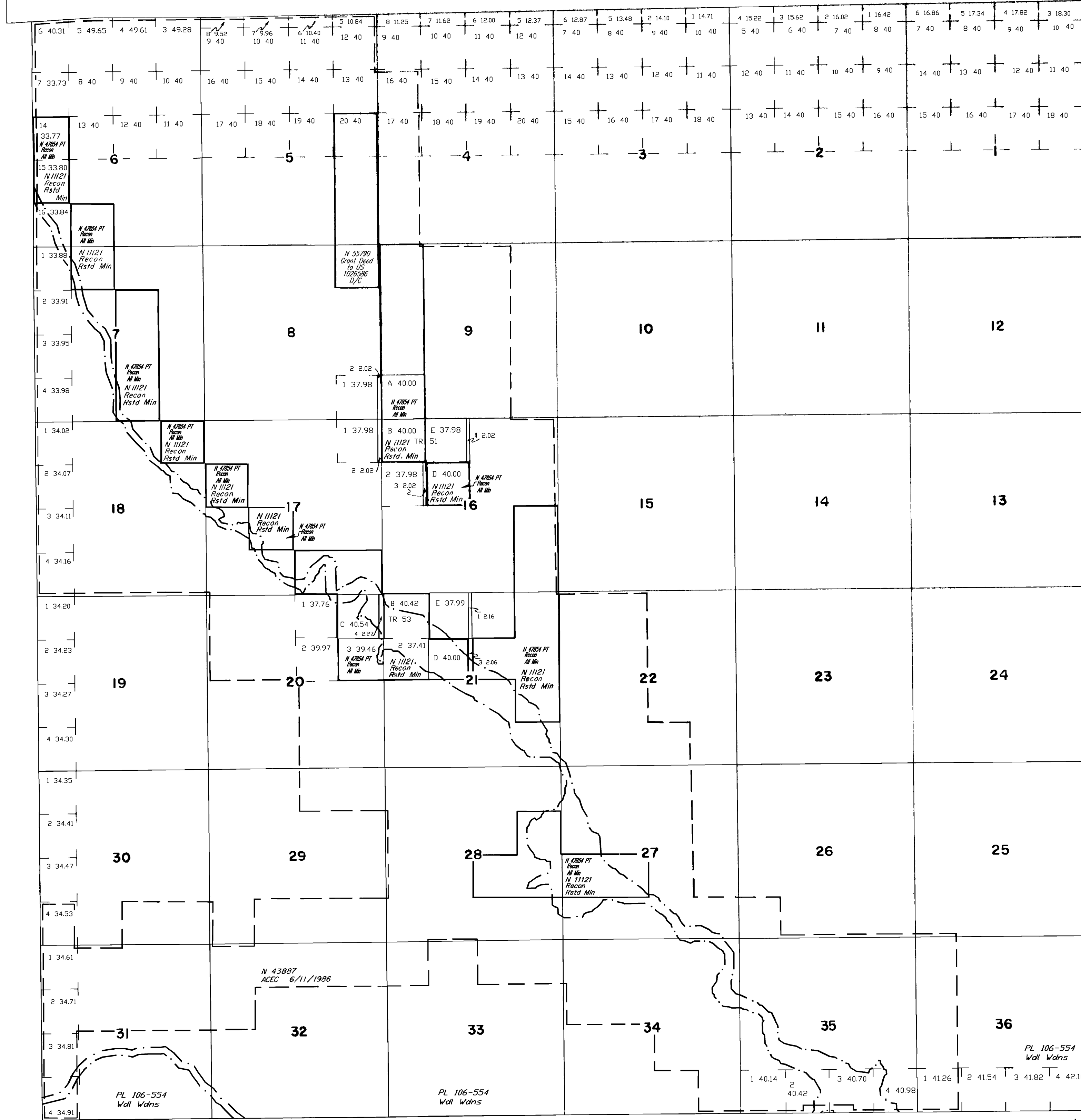


# TOWNSHIP 40 NORTH RANGE 23 EAST OF THE MOUNT DIABLO MERIDIAN, NEVADA

STATUS OF PUBLIC DOMAIN  
LAND AND MINERAL TITLES  
AND ACQUIRED LANDS

WASHOE COUNTY SUSANVILLE GR DIST

## MT PLAT



INDEX TO SEGREGATED TRACTS				
RESURVEY	ORIGINAL SURVEY			
TRACT NO	T	R	SEC	SUBDIVISION
51	40N	23E	9	SW1/4SW1/4
	40N	23E	16	N1/2NW1/4, SE1/4NW1/4
53	40N	23E	20	NE1/4NE1/4
	40N	23E	21	E1/2NW1/4, NW1/4NW1/4

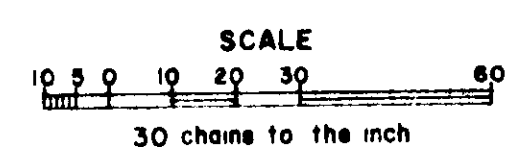
INDEX TO CONFORMED SUBDIVISIONS				
ORIGINAL SURVEY		RESURVEY		
SEC	SUBDVN	T	R	SEC
5	E1/2SW1/4	40N	23E	6
8	NW1/4NE1/4	40N	23E	6
8	SW1/4NE1/4	40N	23E	7
8	NE1/4SE1/4	40N	23E	7
8	SE1/4SE1/4	40N	23E	7
17	NE1/4NE1/4	40N	23E	7
16	SW1/4NW1/4	40N	23E	18
16	NE1/4SW1/4	40N	23E	17
16	SW1/4SE1/4	40N	23E	17
21	NE1/4NE1/4	40N	23E	17
22	NW1/4NW1/4	40N	23E	17
22	SE1/4NW1/4	40N	23E	21
22	NW1/4SE1/4	40N	23E	21
22	NE1/4NE1/4	40N	23E	16
22	SE1/4NE1/4	40N	23E	21
22	NE1/4SE1/4	40N	23E	21
22	SE1/4SE1/4	40N	23E	21
15	SE1/4SE1/4	40N	23E	16
15	NW1/4SE1/4	40N	23E	16
15	SE1/4NW1/4	40N	23E	16
15	NE1/4NW1/4	40N	23E	9
10	SE1/4SW1/4	40N	23E	9
27	NE1/4SW1/4	40N	23E	28
27	SW1/4SE1/4	40N	23E	28
27	SE1/4SE1/4	40N	23E	28
26	SW1/4SW1/4	40N	23E	27
26	SE1/4SW1/4	40N	23E	27

FOR ORDERS EFFECTING DISPOSAL OR USE OF UNIDENTIFIED LANDS WITHDRAWN FOR CLASSIFICATION, MINERALS, WATER AND/OR OTHER PUBLIC PURPOSES. REFER TO INDEX OF MISCELLANEOUS DOCUMENTS.

- PL 106-554 East High Rock Canyon Wdms: N 74464 affects: Secs 1-18, 20-27, 34-36, (W/1).
- PL 106-554 Little High Rock Canyon Wdms: N 74466 affects: Secs 31, 32, (W/1).
- PL 106-554 High Rock Canyon Wdms: N 74467 affects: Secs 6-7, 17-21, 27-35, (W/1).
- PL 106-554 Black Rock Desert - High Rock Canyon Emigrant Trails NCA: N 74460 affects entire TP.

CURRENT TO	BY	CURRENT TO	BY
11/17/2023	MR		

PLAT TYPE



WARNING STATEMENT  
This plat is the Bureau's representation of the Record of Title and should be used only as a graphic display of the township survey data. Records hereon do not reflect title changes which may have been effected by the lateral movements of rivers or other bodies of water. Refer to the cadastral surveys for official survey information.

Lat. 41°20'N  
Long. 119°19'W

T. 40N  
R. 23E  
# 1