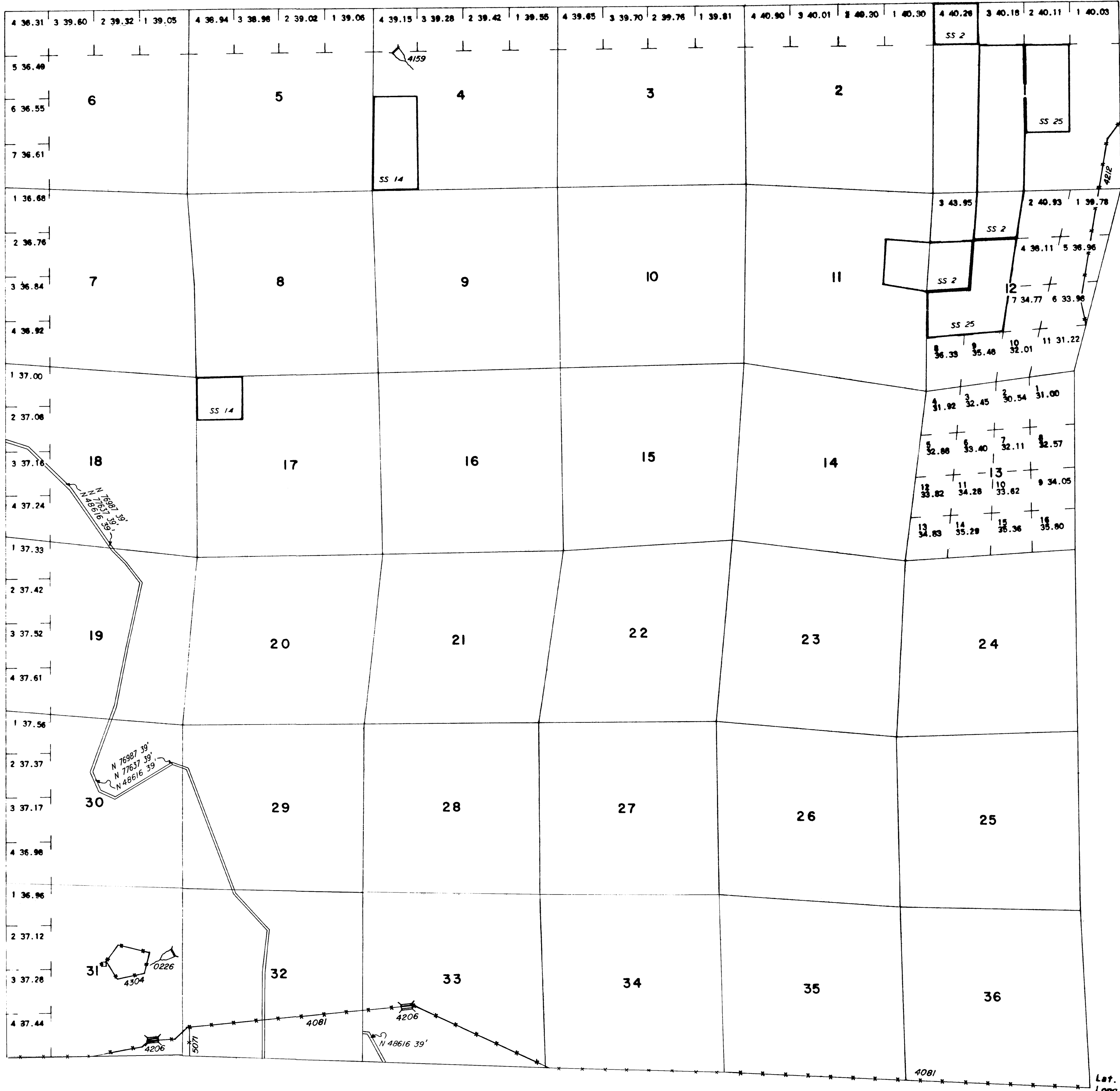


TOWNSHIP 38 NORTH RANGE 48 EAST OF THE MOUNT DIABLO MERIDIAN, NEVADA

ELKO COUNTY  
ELKO GR DIST

STATUS OF PUBLIC DOMAIN  
LAND AND MINERAL TITLES

MT PLAT



INDEX TO SEGREGATED TRACTS

Table with 5 columns: RESURVEY TRACT NO., T, R, SEC, SUBDIVISION. The table is mostly empty.

FOR ORDERS EFFECTING DISPOSAL OR USE OF UNIDENTIFIED LANDS WITHDRAWN FOR CLASSIFICATION, MINERALS, WATER AND/OR OTHER PUBLIC PURPOSES, REFER TO INDEX OF MISCELLANEOUS DOCUMENTS.

SCALE  
10 5 0 10 20 30 60  
30 chains in the inch

**WARNING STATEMENT**  
This plat is the Bureau's Record of Title, and should be used only as a graphic display of the township survey data. Records hereon do not reflect title changes which may have been effected by lateral movements of rivers or other bodies of water. Refer to the cadastral surveys for official survey information.

Table with 2 columns: CURRENT TO, BY. Contains dates and initials: 2/20/04 MS, 6/3/04 MS.

Lat. 41°05'N  
Long. 116°29'W