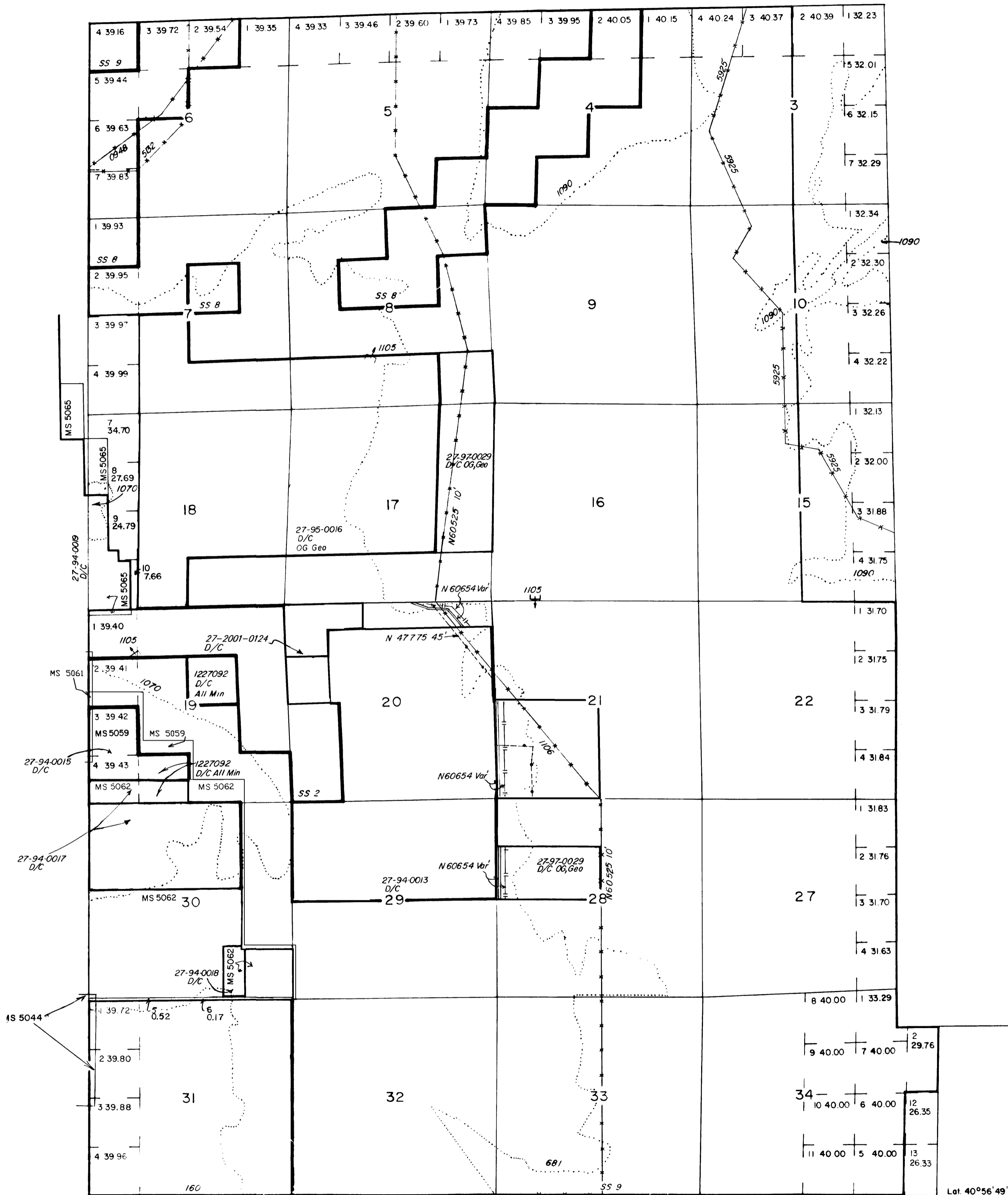


TOWNSHIP 36 NORTH RANGE 50 EAST OF THE MOUNT DIABLO MERIDIAN, NEVADA.

ELKO COUNTY  
ELKO GR DIST

STATUS OF PUBLIC DOMAIN  
LAND AND MINERAL TITLES

MT PLAT



INDEX TO SEGREGATED TRACTS				
RESURVEY TRACT NO	ORIGINAL SURVEY			
	T	R	SEC	SUBDIVISION

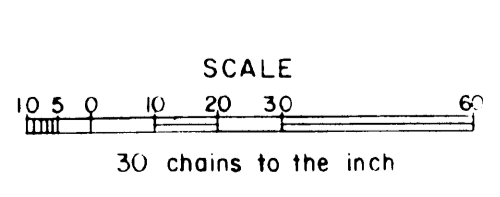
FOR ORDERS EFFECTING DISPOSAL OR USE OF UNIDENTIFIED LANDS WITHDRAWN FOR CLASSIFICATION, MINERALS, WATER AND/OR OTHER PUBLIC PURPOSES REFER TO INDEX OF MISCELLANEOUS DOCUMENTS

- N 58752 Esmt to US affects
- Sec 5: SE1/4NE1/4, W/1
- Sec 6: SE1/4SW1/4, S1/2SE1/4, W/1
- Sec 7: N1/2NE1/4, SE1/4NE1/4, NE1/4NW1/4, S1/2NW1/4, N1/2SE1/4, W/1
- Sec 8: N1/2NW1/4, SW1/4NW1/4, N1/2SW1/4, N1/2SE1/4, SE1/4NE1/4, W/1
- Sec 9: W1/2, W/1
- Sec 16: NW1/4NW1/4, W/1
- Sec 17: S1/2SE1/4, W/1
- Sec 18: S1/2SE1/4, W/1
- Sec 19: N1/2NE1/4, SE1/4NE1/4, SE1/4, NW1/4, W/1
- Sec 20: W1/2SW1/4, W/1
- Sec 21: SW1/4NW1/4, SW1/4NE1/4, SE1/4, E1/2NW1/4, W/1
- Sec 29: S1/2, W/1
- Sec 30: E1/2NE1/4, W/1
- Sec 31: Lots 1, 2; W/1
- Secs 32-33: All; W/1

ME Pat 27-94-0014, MS5061, N55692 affects Sec19

DEPENDENT RESURVEY ACCEPTED 4/3/1987

CURRENT TO	BY
12/27/11	MS



WARNING STATEMENT  
This plat is the Bureau's Record of Title and should be used only as a graphic display of the township survey data. Records hereon do not reflect title changes which may have been effected by lateral movements of rivers or other bodies of water. Refer to the cadastral surveys for official survey information.

N-010  
T-36 N  
R-50 E